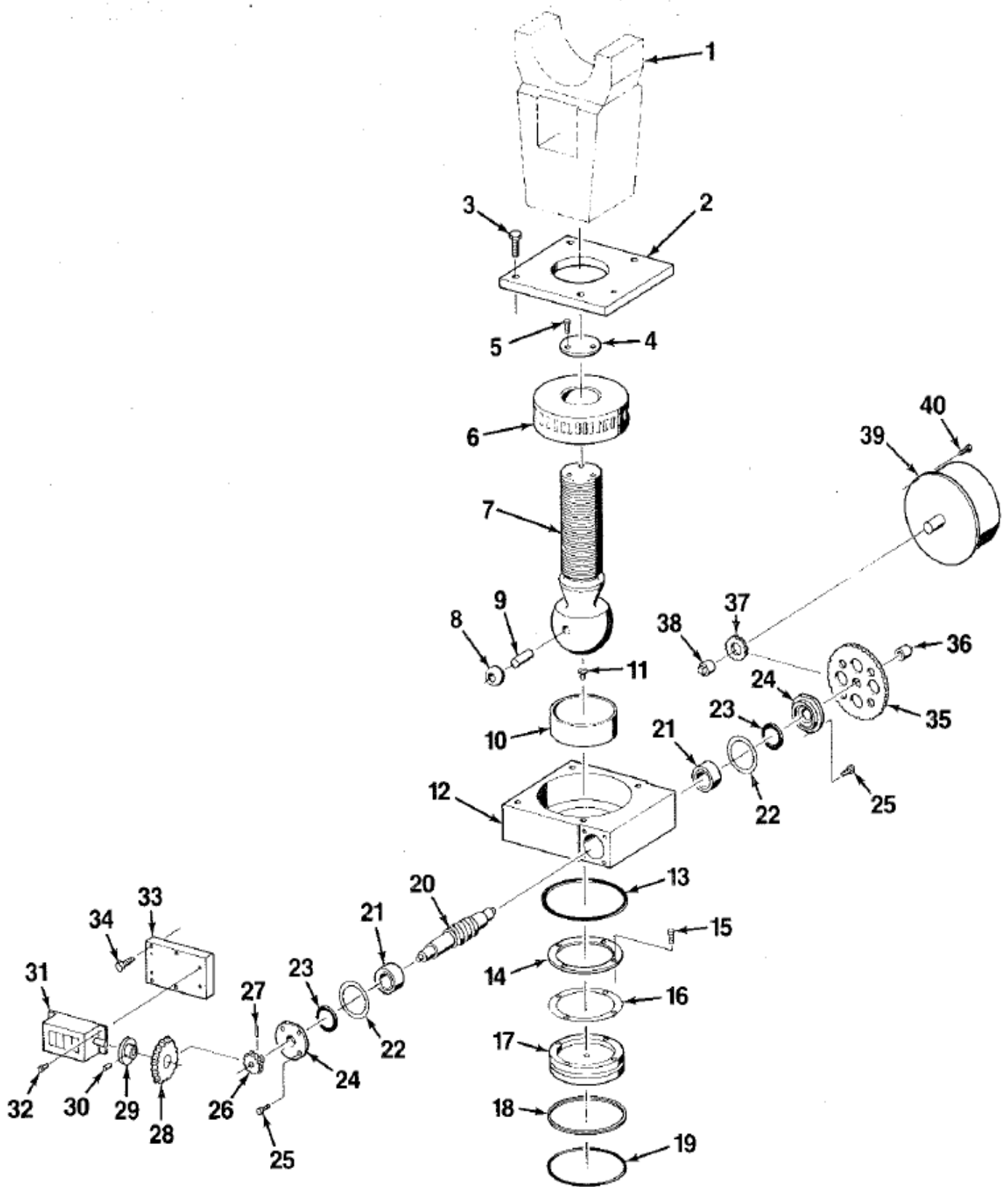


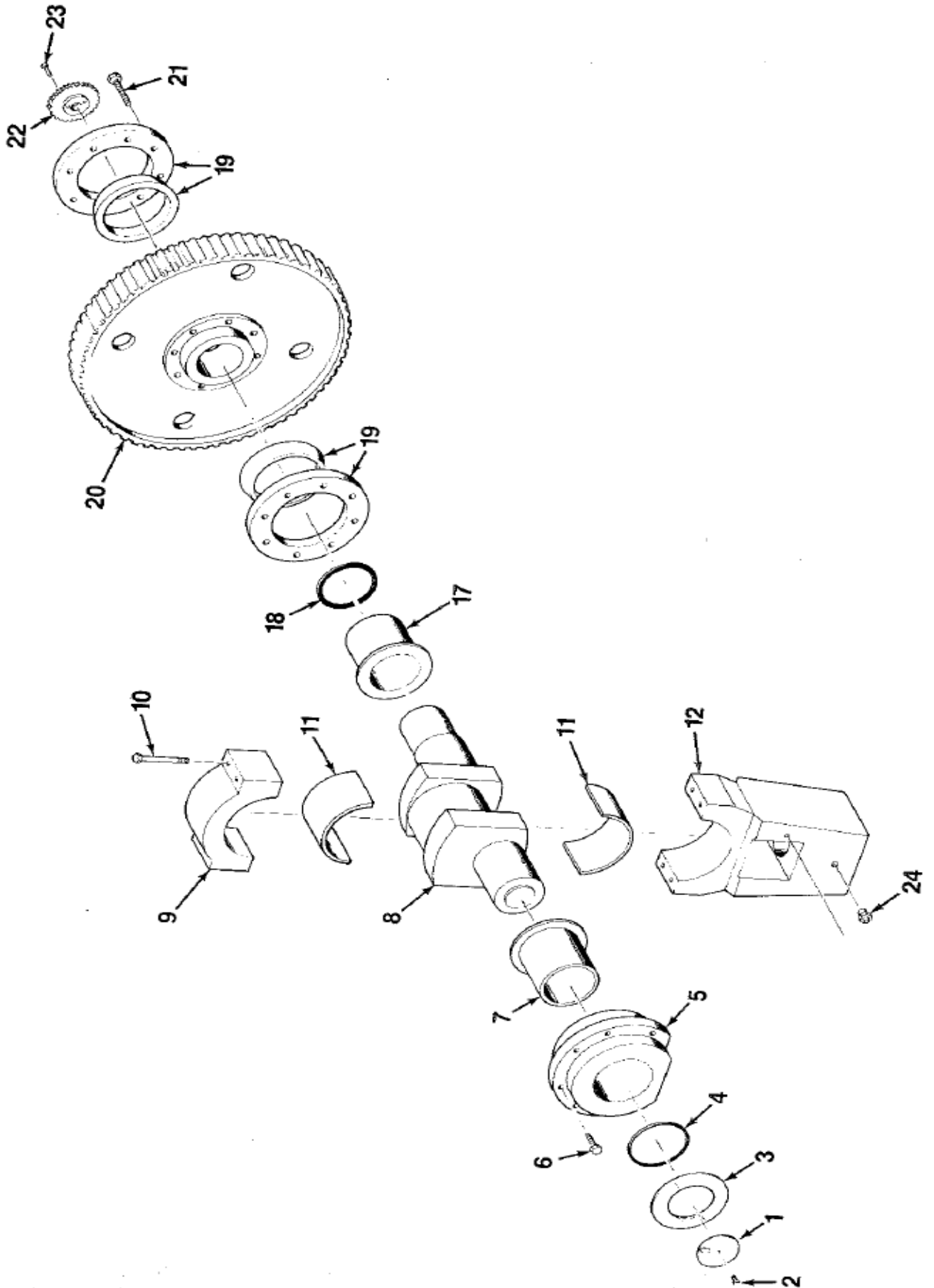
FRAME ASSEMBLY

- | | |
|---|--|
| <ol style="list-style-type: none"> 1. Frame 2. Bolster Plate 3. Screw 4. Slide 5. Ram Adjustment Assembly (See Separate Part List) 6. Slide Cover 7. Screw 8. Overload Manifold 9. Screw 10. Overload Protector 11. Screw 12. Counter Balance Bracket 13. Screw 14. Release Valve Manifold 15. Release Valve 16. Frame Gib 17. Screw 18. Frame Gib Sim 19. Slide Liner (Front & Rear) 20. Screw 21. Side Slide Liner 22. Side Slide Liner Backing Plate 23. Lock Jam Nut 24. Push Screw 25. Pull Screw 26. Crankshaft/Maingear Assembly (See Separate Part List) 27. Air Control Assembly 28. Screw 29. Counter Balance Cylinder 30. Spacer | <ol style="list-style-type: none"> 31. Screw 32. Hex Nut 33. Cotter Pin 34. Gear Box Cover 35. Screw 36. Limit Switch Mount Plate 37. Screw 38. Limit Switch 39. Screw 40. Sprocket 41. Key 42. Snap Ring 43. Guard 44. Screw 45. Chain 46. Air Tank 47. Tank Bracket & Rod 48. Motor Slide Base 49. Screw 50. Motor 51. Drive Assembly (See Separate Part List) 52. Rear Cover With Hinges 53. Screw 54. Wire Cover 55. Screw 56. Control Enclosure 57. Control Enclosure Bracket 58. Shock Mount 59. Screw 60. Screw |
|---|--|



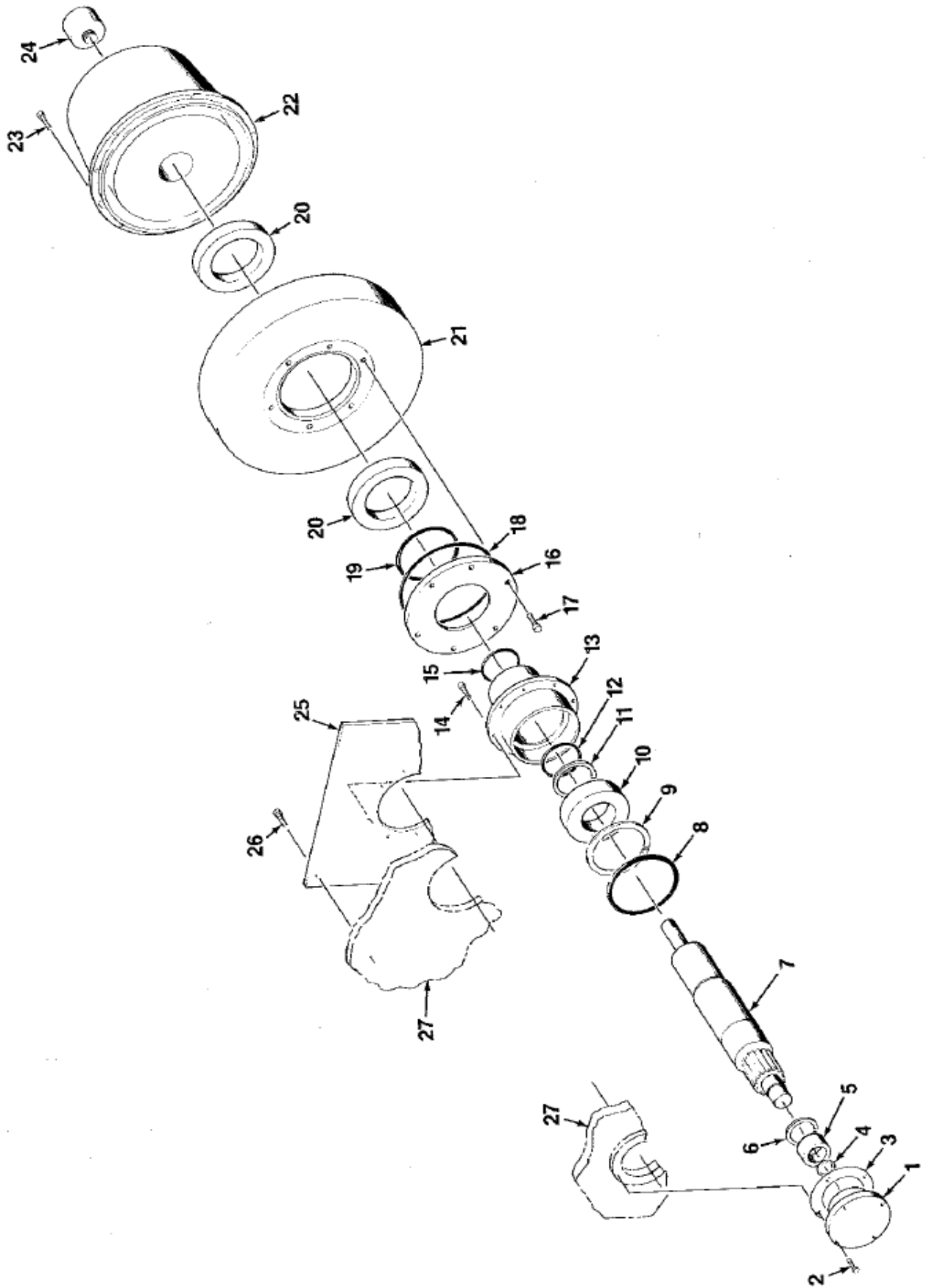
SLIDE ADJUSTMENT ASSEMBLY

1. Connection (Ref)
2. Worm Wheel Retainer
3. Screw
4. Adjusting Screw Cap
5. Screw
6. Worm Wheel
7. Ball Screw
8. Spherical Bearing
9. Pin
10. Ball Seat
11. Pan Head Screw
12. Worm Wheel Enclosure
13. 'O' Ring
14. Spacer
15. Screw
16. Shim
17. Piston
18. Back Up Ring
19. 'O' Ring
20. Worm Shaft
21. Bearing
22. Shim
23. Seal
24. Bearing Cover
25. Screw
26. Bevel Gear
27. Roll Pin
28. Bevel Gear
29. Flanged Bushing
30. Roll Pin
31. Counter
32. Screw
33. Counter Spacer
34. Screw
35. Slide Adjustment Gear
36. Gear Mount
37. Pinion
38. Gear Mount
39. Motor
40. Screw



CRANKSHAFT/MAIN GEAR ASSEMBLY

- | | | | |
|-----|----------------------------|-----|---------------------------|
| 1. | Stroke Indicator Plate | 17. | Rear Main Bearing Bushing |
| 2. | Screw | 18. | Seal |
| 3. | Stroke Indicator Backplate | 19. | Split Shrink Disc |
| 4. | Seal | 20. | Main Gear |
| 5. | Front Bearing Housing | 21. | Screw |
| 6. | Screw | 22. | Crankshaft Sprocket |
| 7. | Front Main Bearing Bushing | 23. | Screw |
| 8. | Crankshaft | 24. | Grease Fitting |
| 9. | Connection Cap | | |
| 10. | Bolt | | |
| 11. | Connection Bushing | | |
| 12. | Connection | | |



DRIVE ASSEMBLY

- | | | | |
|-----|----------------------------|-----|-----------------------------|
| 1. | Driveshaft Front Cartridge | 15. | O-Ring |
| 2. | Screw | 16. | Quill Seal Cartridge |
| 3. | Gasket | 17. | Screw |
| 4. | Snap Ring | 18. | O-Ring |
| 5. | Bearing | 19. | Seal |
| 6. | Snap Ring | 20. | Bearing |
| 7. | Driveshaft | 21. | Flywheel |
| 8. | O-Ring | 22. | Clutch-Brake |
| 9. | Snap Ring | 23. | Screw |
| 10. | Bearing | 24. | Rotary Union |
| 11. | Snap Ring | 25. | Quill Plate |
| 12. | Seal | 26. | Screw |
| 13. | Quill | 27. | Frame/Gearbox Housing (Ref) |
| 14. | Screw | | |