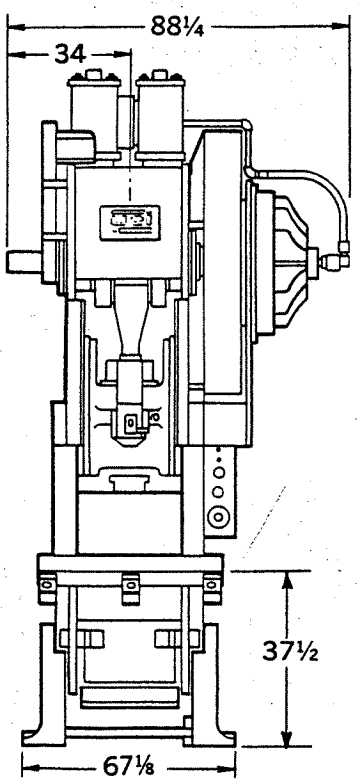
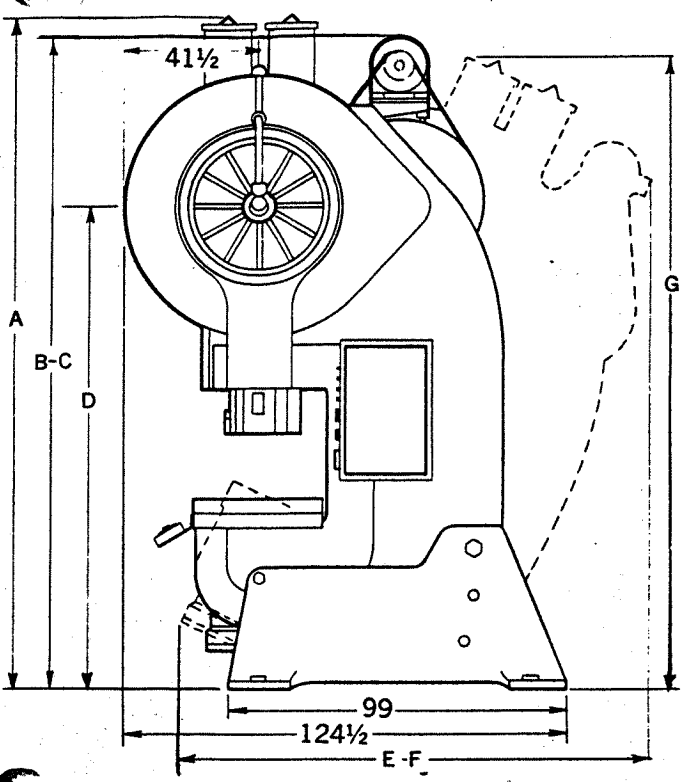


200

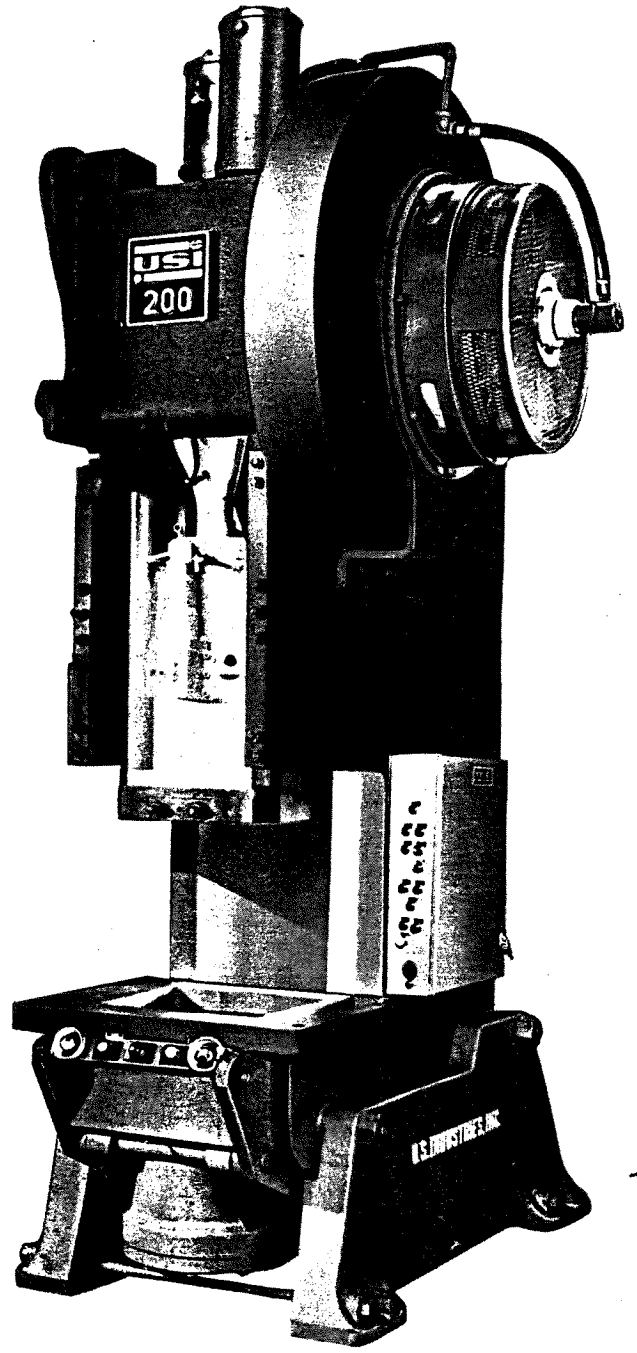
# INCLINABLE PRESSES



## FRAME DIMENSIONS

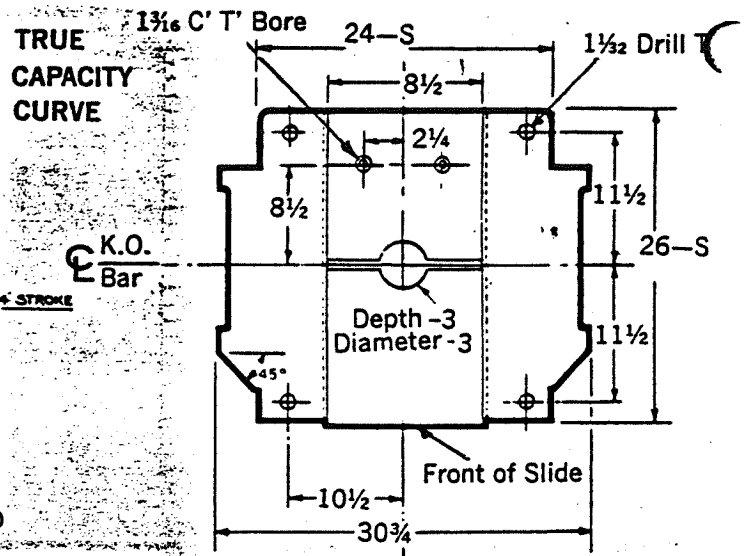
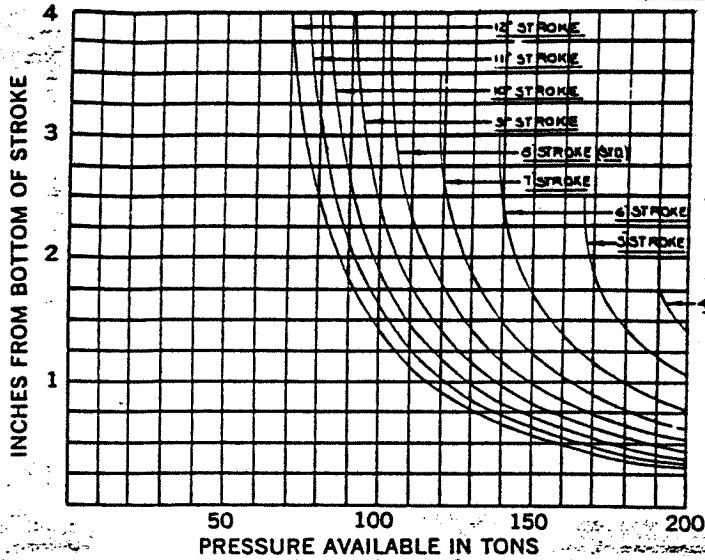


	A	B	C	D	E	F	G
Standard	181 1/8	Std. Mtr. 177 1/4	Var. Sp. Mtr. 181 1/2	130 1/4	Std. Mtr. 122 3/8	Var. Sp. Mtr. 140	172 7/8
High Body	185 1/8	181 1/4	185 1/2	134 1/4	124 3/8	141 1/4	176 1/4



SHIPPING WEIGHT OF ASSEMBLED STANDARD BODY 200 TON CAPACITY PRESS WITH COUNTER-BALANCE CYLINDER AND BOLSTER IN PLACE:  
 GEARED 50,000 pds.

# 200 TON HEAVY SERIES OPEN BAL



## SPECIFICATIONS

SPECIFICATIONS		GEARED
Capacity		200 tons
Type of Frame		Steel Weldment
Bolster Size (LR x FB)		54 x 35
Single Speed		
Strokes per Minute, Std.		32
Strokes per Minute, Max.		40
Variable Speed		
Strokes per Minute		25-50
Slide Adjustment		5
Motor Horsepower		20
Motor RPM		1200
Driveshaft RPM (@ Std. SPM)		304
Flywheel Diameter		40
Flywheel Face		8
Flywheel Weight, Pounds		2,800
Main Gear Pitch Diameter		76
Crankshaft at Main Bearings, Diameter		7 $\frac{1}{2}$
Crankshaft at Crank Pin, Diameter		10 $\frac{1}{2}$
Cushions, Optional		
Single Cylinder, Diameter		28
Capacity at 100 psi		
Single, Tons		30.8
Cushion Stroke		6

Stroke, Inches	Standard Body Shutheight	High Body Shutheight
4	25 $\frac{1}{2}$	29 $\frac{1}{2}$
5	25	29
6	24 $\frac{1}{2}$	28 $\frac{1}{2}$
7	24	28
8 (Std.)	23 $\frac{1}{2}$	27 $\frac{1}{2}$
9	22 $\frac{1}{2}$	26 $\frac{1}{2}$
10	21 $\frac{1}{2}$	25 $\frac{1}{2}$
11	20 $\frac{1}{2}$	24 $\frac{1}{2}$
12	19 $\frac{1}{2}$	23 $\frac{1}{2}$

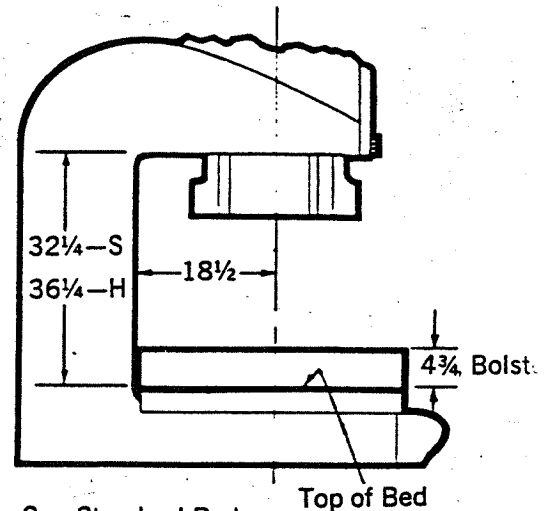
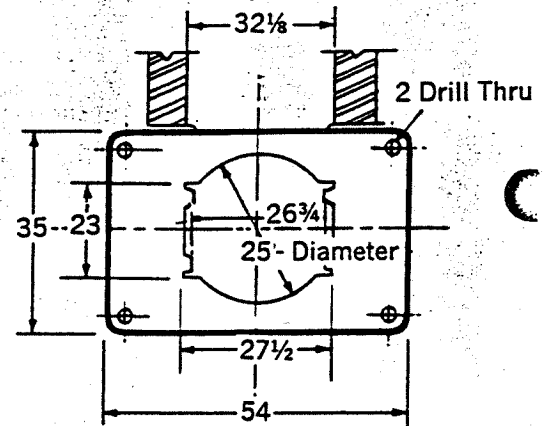
Shutheight—stroke down, adjustment up (face of slide to top of bed)

Motorized slide adjustment is standard on 200 ton model.

Flanged Slide (inches shutheight reduced) 5 $\frac{1}{4}$

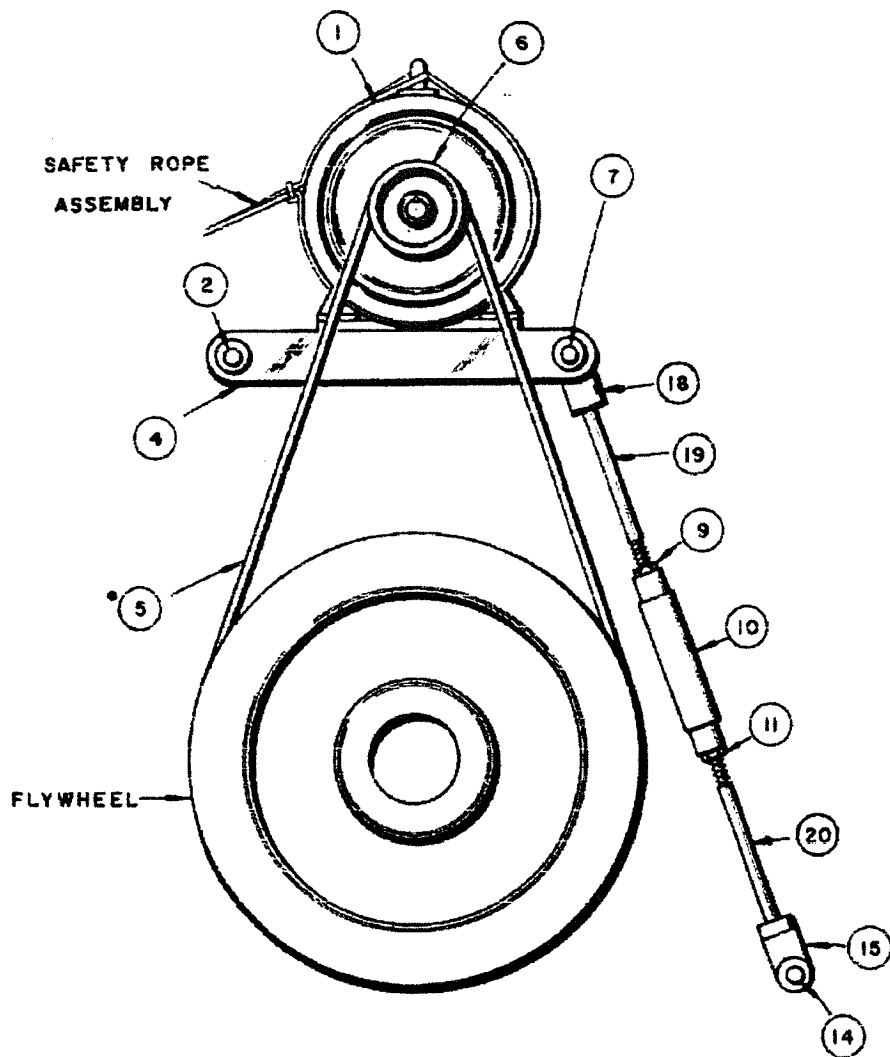
S = Standard Slide

F = Flanged Slide



S = Standard Body

H = High Body



## MOTOR DRIVE

200 Ton OBI

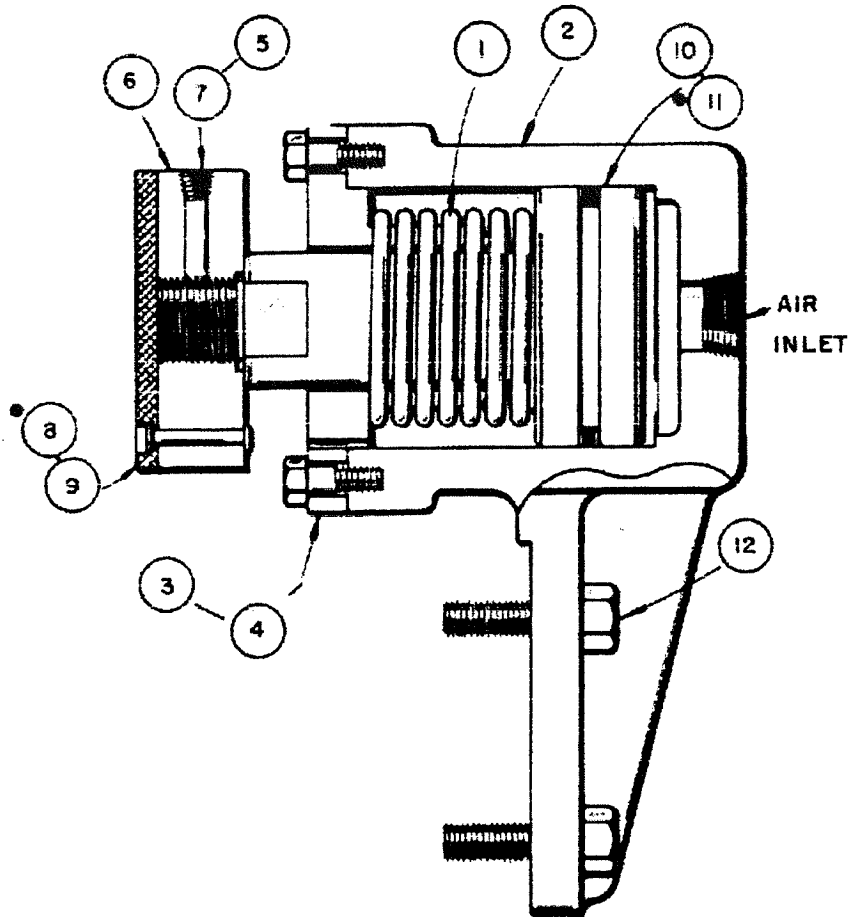
STANDARD

R-10186  
Ref. Drwg.

- 1. Main Motor
- 2. Pivot Pin
- 5.\* "V"-Belts,
- 6. Motor Sheave
- 7. Motor Base Pin
- 9. Hex Nut, R.H.

- 10. Turnbuckle
- 11. Hex Nut, L.H.
- 14. Clevis Pin
- 15. Clevis
- 18. Motor Base Support
- 19. Adj. Rod, Upper
- 20. Adj. Rod, Lower

# 200



**FLYWHEEL BRAKE  
GEARED  
200 TON OBI  
OPTIONAL**

**R-6686  
Ref.Drwa.**

- 1. Spring
- 2. Housing
- 3. Cap
- 4. Hex Hd. Cap Screw
- 5. Pipe Plug
- 6. Brake Shoe

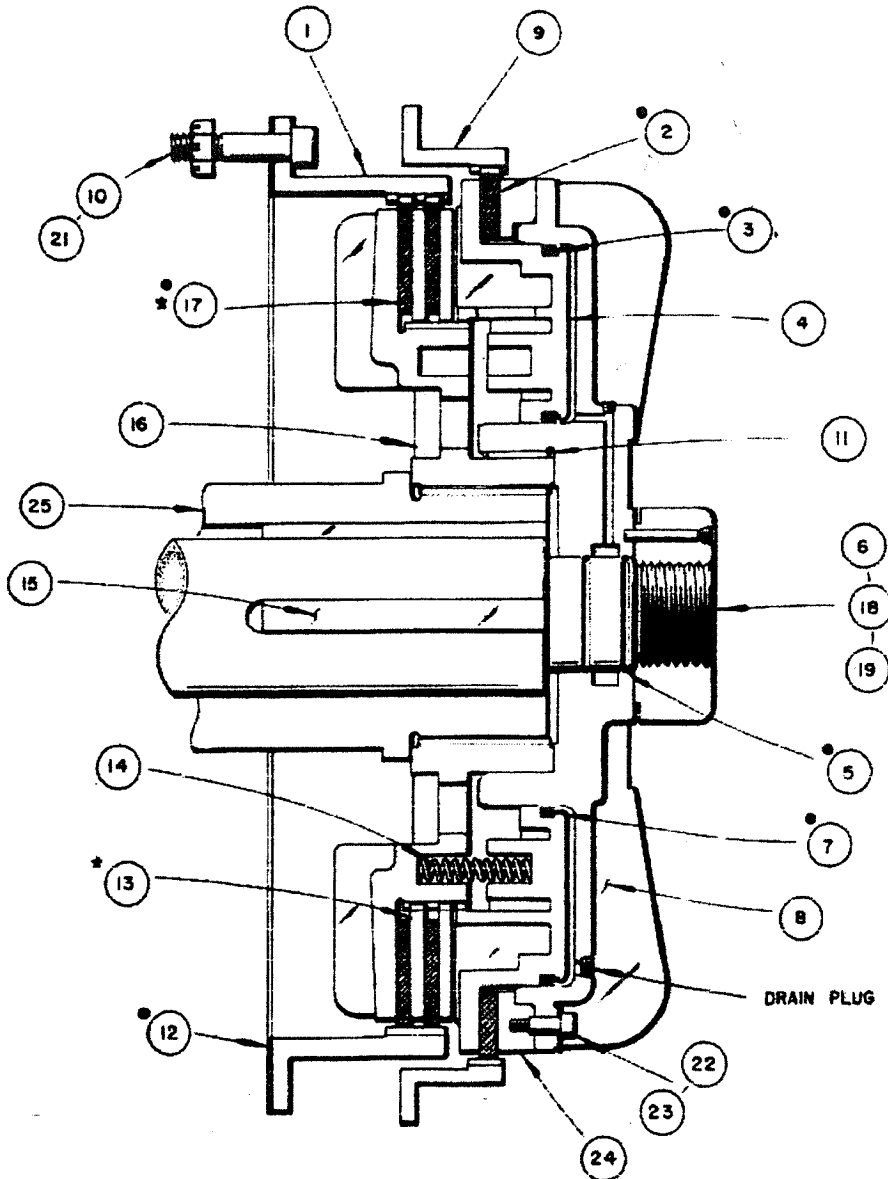
- 7. Dowel Pin
- 8.\* Lining
- 9. Rivet
- 10. Piston
- 11.\* Packing, Palmetto
- 12. H.H.CapScrew (4)  
Air Inlet

## CLUTCH & BRAKE

200 Ton OBI

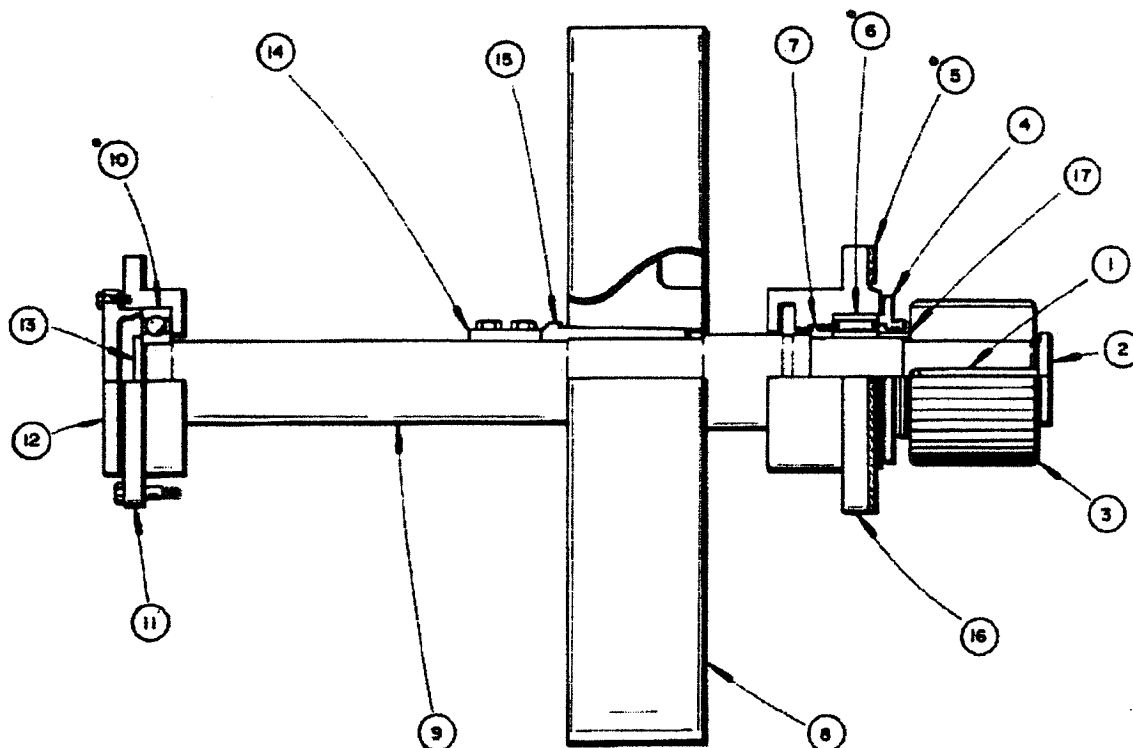
STANDARD

R-8426  
Ref. Drwa.



1. Clutch Drive Ring
- 2.\* Brake Fric. Disc (1)
- 3.\* "E"-Packing
4. Piston
- 5.\* "O"-Ring (2)
6. Clutch Locknut
- 7.\* "E"-Packing,
8. Cylinder
9. Brake Ring
10. S.Hd.Cap Scr (12)
11. Key
- 12.\* Gasket
- 13.\* Interm. Disc (2) (3)
14. Spring (16)
15. Key (2),
16. Cl. Drive Hub
- 17.\* Cl. Fric.Disc (2) (3)
18. Dowel Pin
19. Pipe Plug
21. Slotted Hex Nut
22. Shoulder Screw (12)
23. Shim
24. Spacer
25. Bearing Sleeve

# 200



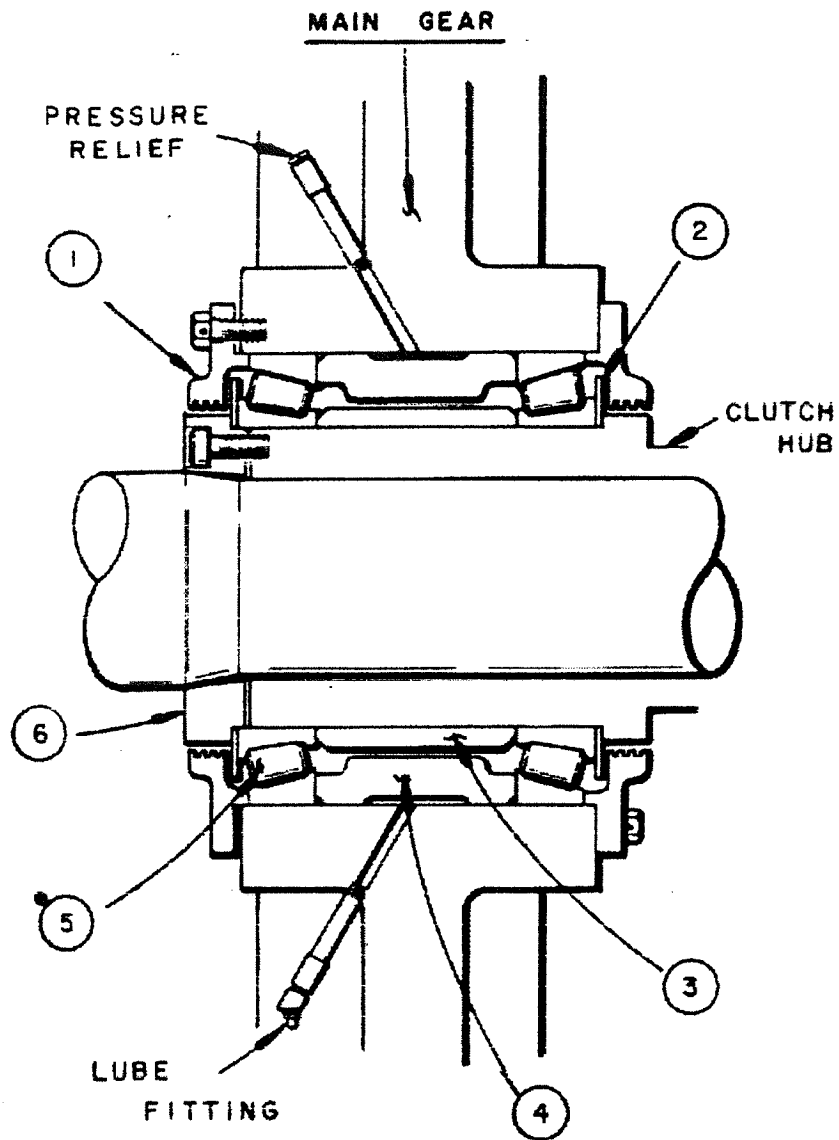
**DRIVESHAFT  
GEARED  
200 Ton OBI  
STANDARD**

**R-8834  
Ref. Drwa.**

- 1. Key (2)
- 2. End Plate
- 3. Pinion, Herr.
- 4. Retainer
- 5\*. Gasket,
- 6.\* Bearing,
- 7. Bearing Spacer
- 8. Flywheel,
- 9. Driveshaft

- CB29822-2
- CB29822-1
- CA35115-1
- CA35116-1
- CB45232-1
- CB81103-2
- CB81105
- CA143446

- 10.\*Bearing,
- 11. Bearing Housing, LH
- 12. Bearing Retainer
- 13. End Plate
- 14. Key,
- 15. Gib Taper Key,
- 16. Bearing Housing, RH
- 17. Spacer



## MAIN BEARING GEAR OR FLYWHEEL

200 Ton OBI

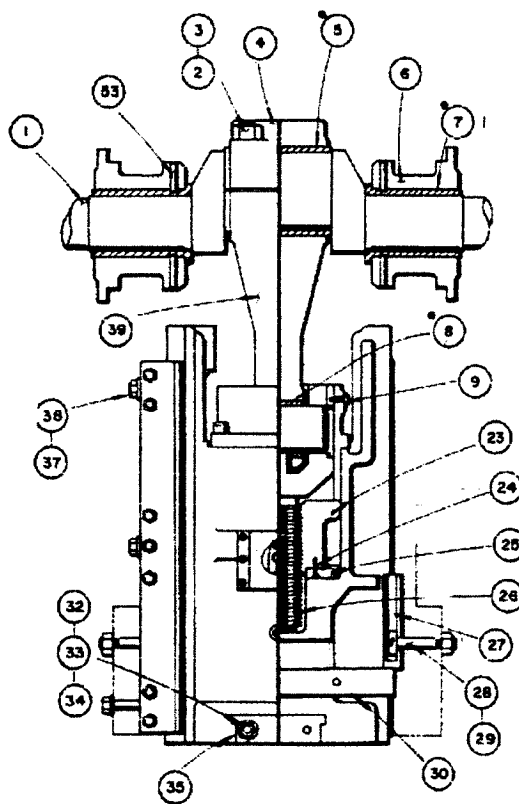
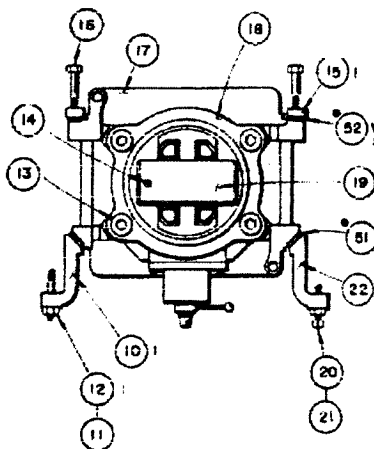
STANDARD

R-10821  
Ref. Drwg.

- 1. Retainer (2)
- 2. Slinger Plate (2)
- 3. Cone Spacer
- 4. Cup Spacer
- 5.\* Bearing (2), Note 1
- 6. Retainer  
"O"-Ring, Note 2  
Clutch Hub

SLIDE ASSEMBLY 200 Ton OBI STANDARD

R-10278





**Slide Assembly - 200 Ton Obi - R-10278**

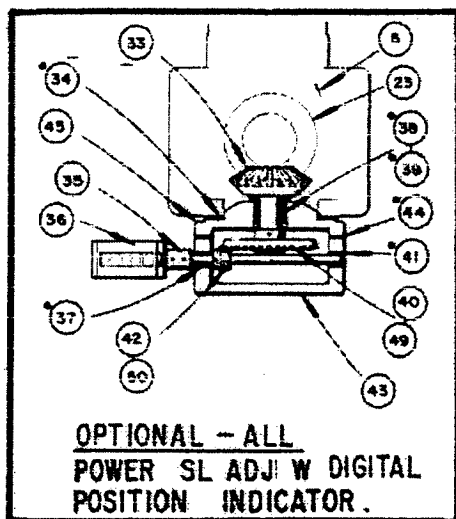
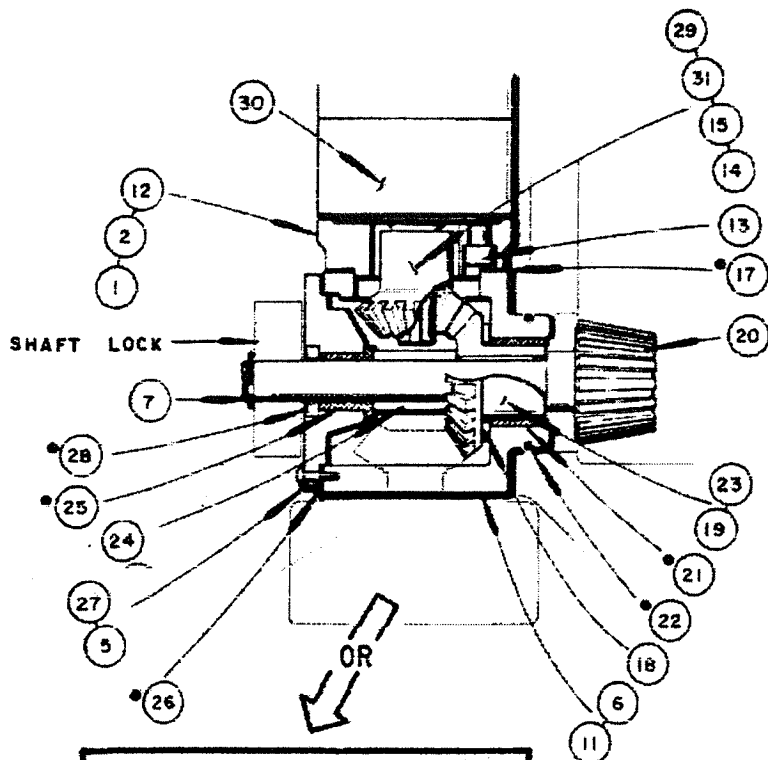
- |                            |  |                                 |
|----------------------------|--|---------------------------------|
| 1. Crankshaft              |  | 27. Knockout Bar Stop (2)       |
| 2. Hex Locknut             |  | 28. T-Bolt (2),                 |
| 3. Hex Hd.Stud             |  | 29. Hex Nut                     |
| 4. Connection Cap          |  | 30. Knockout Bar                |
| 5.* Bushing                |  | 31.                             |
| 6. Bearing Retainer (2)    |  | 32. Soc.Hd.Cap Stud             |
| 7.* Bushing (2)            |  | 33. Washer                      |
| 8.* Wrist Pin Bushing      |  | 34. Nut                         |
| 9. Stop crew               |  | 35. Slide Cap                   |
| 10. Front Gibs (2)         |  | 36.                             |
| 11. Hex Hd.Nut             |  | 37. Washer, Plain (6)           |
| 12. Stud,                  |  | 38. Cap Screw, (6)              |
| 13. Soc.Hd.Cap Screw       |  | 39. Connection Strap            |
| 14. Dowel Pin,             |  |                                 |
| 15. Rear Gibs (2)          |  |                                 |
| 16. Hex Hd.Cap Screw, (10) |  |                                 |
| 17. Slide                  |  |                                 |
| 18. Slide Adjust Housing   |  |                                 |
| 19. Wrist Pin              |  |                                 |
| 20. Sq. Hd.Jack Screw      |  |                                 |
| 21. Jam Nut (6)            |  |                                 |
| 23. Connection Screw Nut   |  | 51. Wear Strip, front (2), Std. |
| 24. Flat Hd.Mach.Scr. (4)  |  | 52. Wear Strip, rear (2), Std.  |
| 25. Bevel Gear             |  | Wear Strip, front (2), Flngd.   |
| 26. Connection Screw       |  | Wear Strip, rear (2), Flngd.    |

## POWER SLIDE ADJUSTMENT GEARBOX

200 Ton OBI

STANDARD

R-10466  
Ref. Drwg.



1. Soc.Hd.Cap Screw (4)
2. Oil Cup
3. Cap Screw
4. Shaft Lock
5. Cap Screw (6)
6. Gear Housing
7. Retaining Ring,
8. Knob (2)
9. Handle
10. Lock Stud
11. Cap Screw
12. Motor Base
13. Cap Screw (3)
14. Roll Pin,
15. Set Screw
- 17.\* Gasket,
18. Spacer
19. Key
20. Bevel Pinion Shaft,
- 21.\* Bushing
- 22.\* "O"-Ring
23. Bevel Gear Pinion,
24. Spacer
- 25.\* Bushing

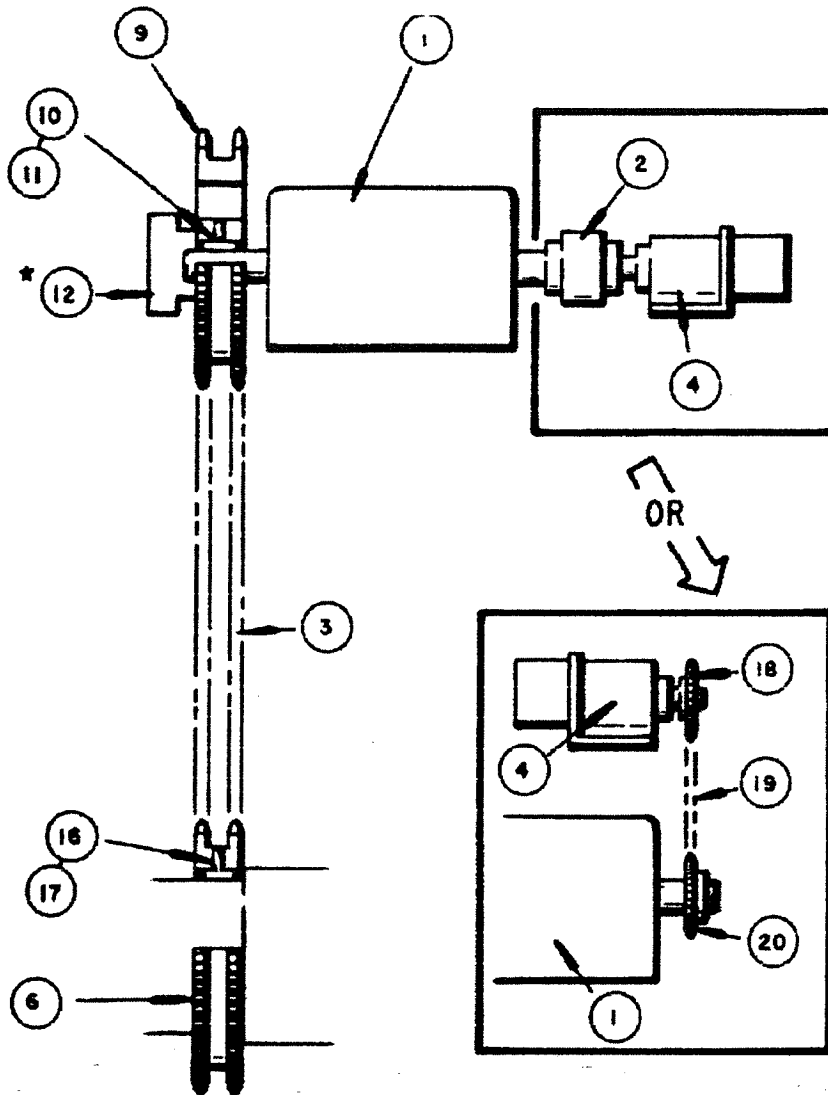
- 26.\* Gasket
- 28.\* Oil Seal,
30. Air Motor,
- 32.
- 34.\* Gasket
36. Counter
- 38.\* Bushing
40. Bevel Gear
42. Bevel Pinion
- 44.\* Gasket
49. Roll Pin

27. Retainer
29. Bevel Pinion,
31. Key
33. Bevel Pinion
35. Coupling
- 37.\* Bushing
- 39.\* Oil Seal
- 41.\* Bushing
43. Housing
45. Housing Cap
50. Roll Pin

## LIMIT SWITCH DRIVE

200 Ton OBI

STANDARD



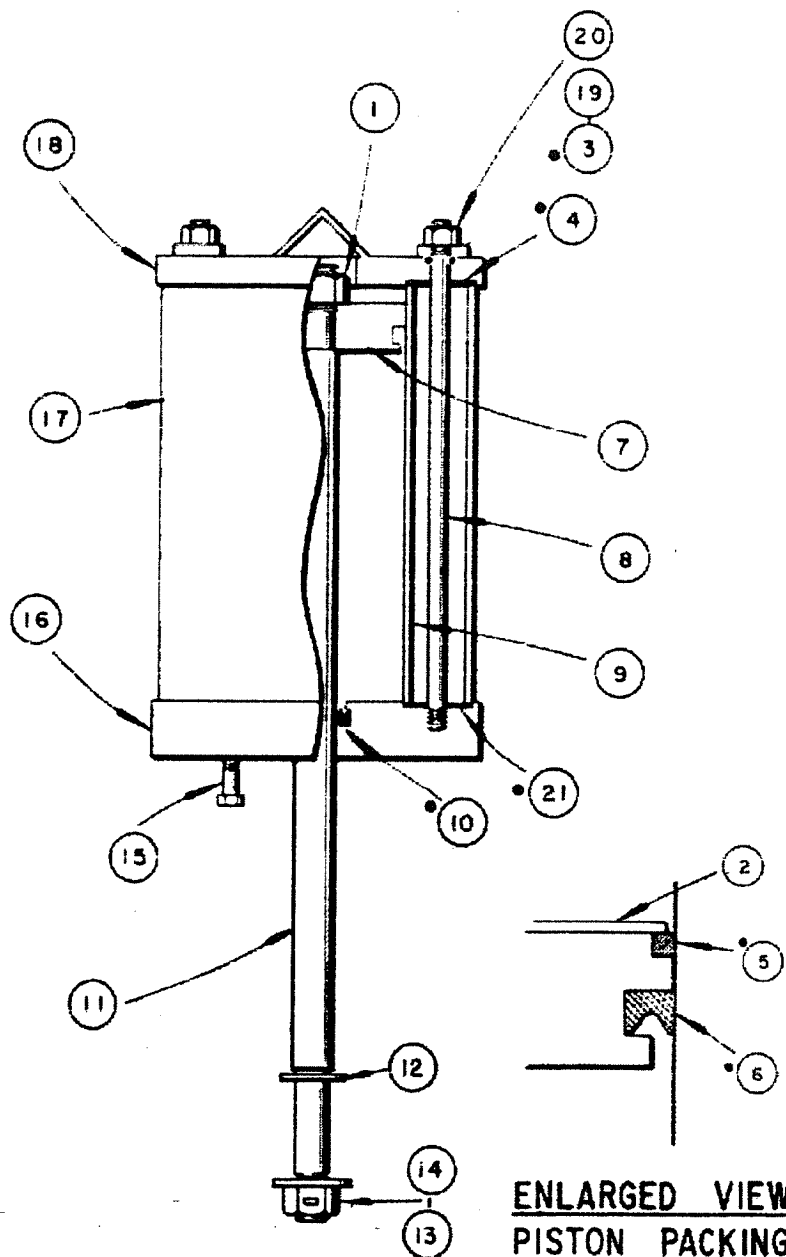
R-8971  
Ref. Drwg.

- 1. Limit Switch;
- 2. Coupling
- 3. Chain,
- 4. Motion Detector,
- 6. Drive Sprocket
- 9. Driven Sprocket
- 10. Set Screw
- 11. Key
- 12. External Adjust Mech.
- 16. Set Screw
- 17. Key
- 18. Sprocket
- 19. Chain,
- 20. Sprocket, Bracket

## COUNTERBALANCE CYLINDER

200 Ton OBI

STANDARD



**ENLARGED VIEW  
PISTON PACKING**

- 1. Locknut
- 2. Washer
- 3.\* "O"-Ring (4)
- 4.\* Gasket
- 5.\* Felt Washer
- 6.\* "U"-Packing,
- 7. Piston
- 8. Tie Rod (4)
- 9. Inner Cylinder/
- 10.\* "U"-Pkng

- 11. Piston Shaft,
- 12. Washer, (2)
- 13. Cotter Pin
- 14. Std. Hex Head
- 15. Soc.Hd.Cap Scrw,
- 16. Cylinder Head
- 17. Outer Cylinder
- 18. Cylinder Cover
- 19. Washer (4)
- 20. Hex Nut

Safety Valve [set at 125 psi]

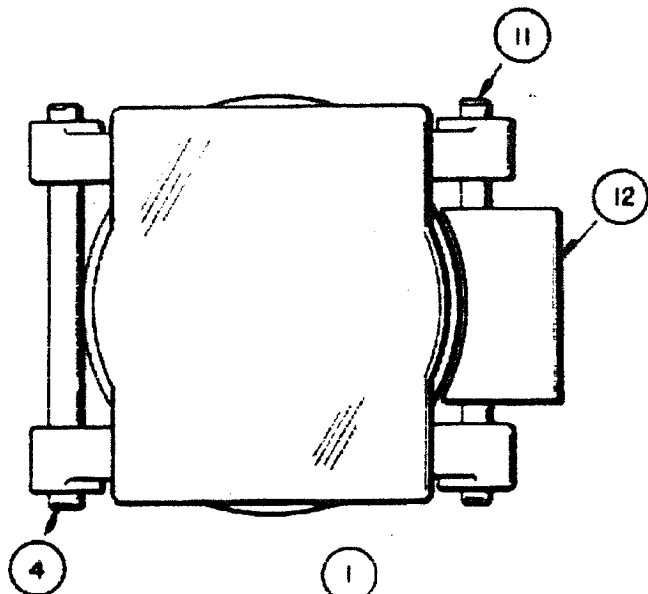
R-11076  
Ref. Drwg.

# 200

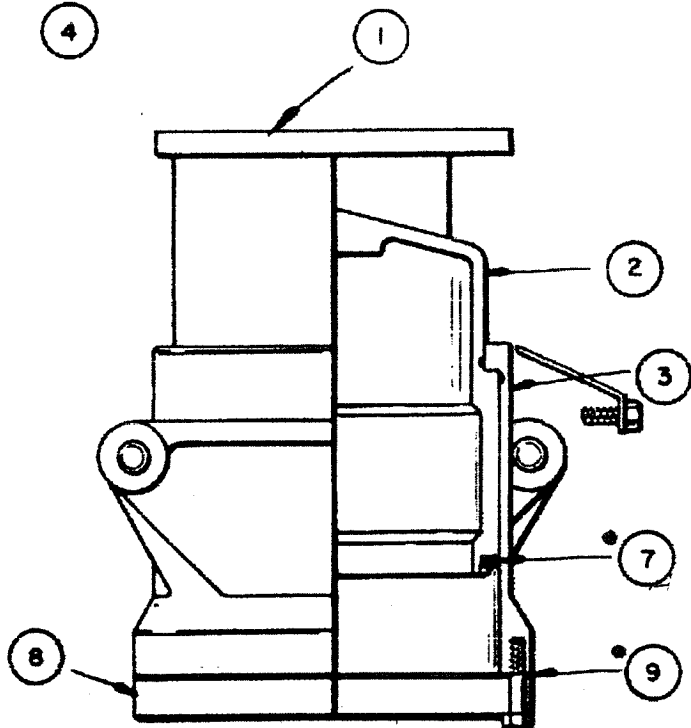
## CUSHION

200 Ton OBI

OPTIONAL



R-11209  
Ref. Drwg.



- 1. Pressure Pad
- 2. Piston
- 3. Cylinder
- 4. Support Rod - Front  
Retaining Rings (2)
- 7.\* Packing,
- 8. Cylinder Cover  
H.H.C.S. (8)
- 9.\* Gasket,
- 11. Support Rod - Rear
- 12. Cover Shield

28" CUSHION I-28  
30.8 Tons @ 100 psi  
6" stroke