

BLISS TYPE "CKU" SINGLE DISC CLUTCH

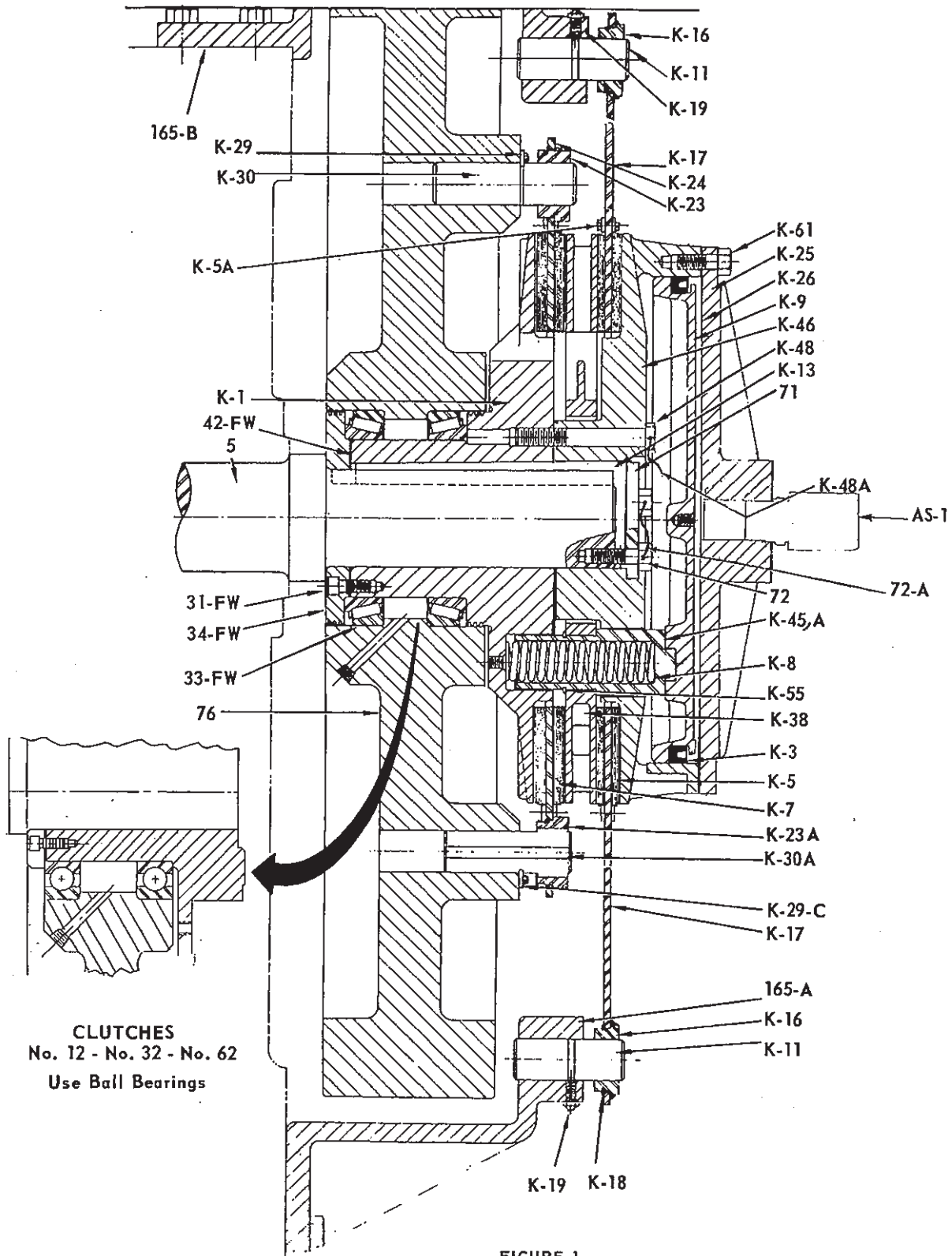


FIGURE 1

BLISS TYPE "CKU" DOUBLE DISC CLUTCH

MULTIPLE DISC CLUTCH

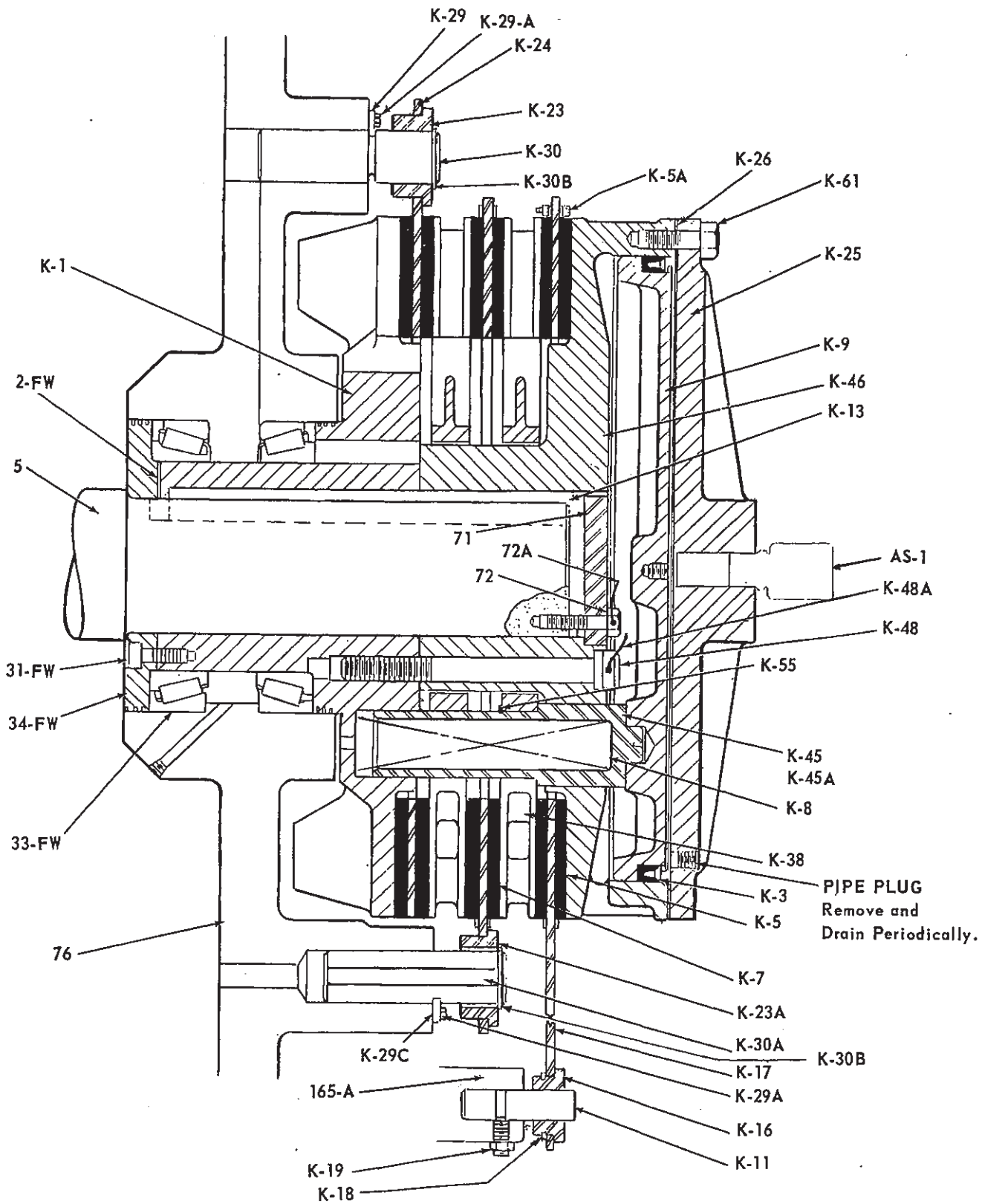


FIGURE 2

BLISS TYPE "CKU" SINGLE DISC CLUTCH

PARTS LIST

76	Flywheel	K-29A	Retainer screws
K-1	Clutch body	K-29B	Retainer wire
K-3	Piston packing, large	K-30	Clutch friction disc pin
K-5	Brake lining, 1 inner, 1 outer	K-30A	Clutch friction disc pin with flats
K-5A	Brake lining, bolt & locknut	K-38	Driving disc
K-7	Clutch lining, 1 inner, 1 outer	K-45	Driving pin-plain
K-8	Brake spring	K-45A	Driving pin-w/lug
K-9	Piston	K-46	Air cylinder
K-11	Brake friction disc pin	K-48	Clutch body screws
K-13	Clutch and shaft key	K-48A	Locking wire
K-16	Brake friction disc bushing	K-55	Outer retaining ring (snap ring)
K-17	Brake friction disc	K-61	Clutch cylinder cover screws
K-18	Snap ring on disc pin retainer screw	31-FW	Flywheel bearing retainer screw
K-19	Brake friction disc pin retainer screw	33-FW	Flywheel bearing
K-23	Clutch friction disc bushing	34-FW	Flywheel bearing retainer
K-23A	Clutch friction disc bushing with flats	42-FW	Flywheel bearing adjusting shims
K-24	Clutch friction disc	AS-1	Air swivel assembly
K-25	Clutch cylinder head	165-A	Brake bracket (lower)
K-26	Clutch cylinder head gasket	165-B	Brake bracket (upper)
K-29	Locking plate - (half circle)	71	End Plate
K-29C	Locking plate - (rectangular)	72	Cap screw
K-30B	Snap ring	72A	Locking wire

When ordering spare parts or replacements, give the PRESS NUMBER, the SERIAL NUMBER, the NUMBER and NAME of the part wanted, and the PAGE NUMBER of this service manual.

On clutch sizes #12, #32 and #62 ball bearings are used. On clutch sizes #122 and #252 and up roller bearings are used.

WARNING: If it is necessary to disassemble clutch, remove two (K-48) clutch body screws and add two longer screws or studs. This is to prevent cylinder (K-46) from coming off shaft as spring (K-8) has tendency to separate cylinder and clutch body.

INSTRUCTIONS FOR REMOVING THE FLYWHEEL AND CLUTCH ASSEMBLY FROM THE CRANKSHAFT

1. Disconnect hose from AS-1 swivel.
2. Remove K-61 cap screws which will allow K-25 cylinder head to be removed. Be careful not to destroy K-26 gasket.
3. Remove K-9 piston.
4. Remove 72A and 72 cap screws and wire.
5. Remove 71 end plate.
6. Remove K-13 tapered key by use of jack screw and pry bar. Bottom jack screw before using pry bar.