

NIAGARA

INSTRUCTIONS

AIR RELEASING BRAKE

OPERATION

Niagara Presses are equipped with an air releasing brake having full floating, self-aligning brake shoes together with a spring to apply pressure of the shoes against the brake drum, and an air cylinder to release the pressure.

Individual brake shoes float freely in the brake arms and, therefore, cannot cock or bind and wear unevenly. The spring and air cylinder are direct acting on one axis with no toggle joints or other complicated mechanisms.

Air releasing brakes are piped to the clutch air system which includes an air line oiler that will supply a satisfactory amount of oil to lubricate the necessary parts.

MAINTENANCE

When the adjusting groove of the piston (See Fig. 1) comes adjacent to the bushing, the brake will require adjustment in the following manner:

1. Jog the press to bottom of stroke.
2. Shut off motor and allow flywheel to stop.
3. Apply air to brake by depressing stop button.
4. Loosen the locknut several turns.
5. Turn the adjusting nut until the brake shoes are snug against the brake drum.
6. Back off adjusting nut 3 complete turns.
7. Tighten locknut.

Leakage of air past the brake piston will cause the brake to drag. Promptly replace leaky piston packings.

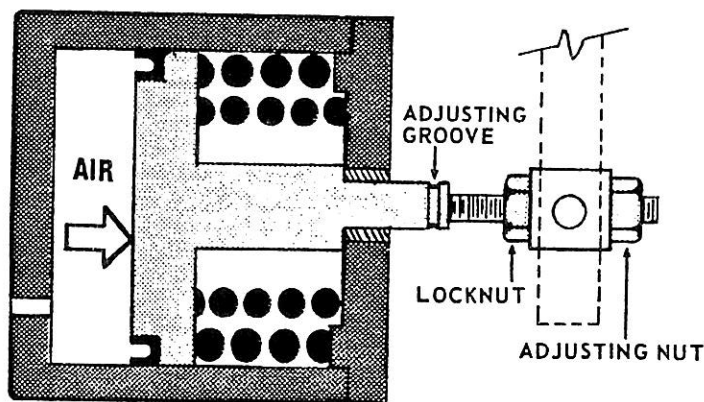


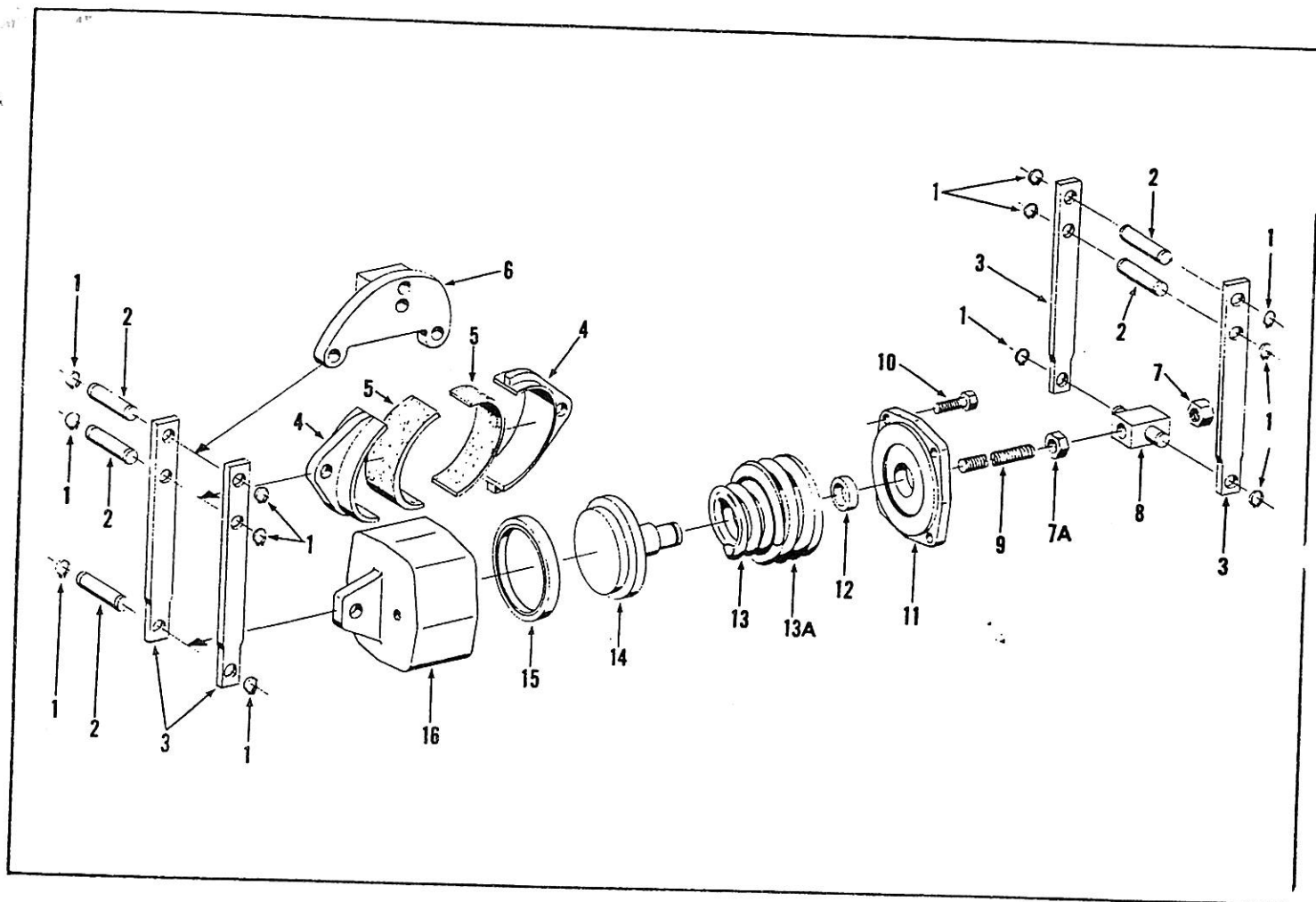
FIG. 1

A-6-C-4

NIAGARA MACHINE & TOOL WORKS

General Offices and Works, 683 Northland Avenue, Buffalo 11, N. Y., U.S.A.

District Offices and Distributors in principal U. S. cities and major foreign countries



PARTS LIST

1. Retaining Ring (12 req.)
2. Pin (5 req.)
3. Arm (4 req.)
4. Shoe (2 req.)
5. Brake Lining (2 req.)
6. Bracket (Design may vary)
7. Adjusting Nut
- 7A. Locknut
8. Trunnion
9. Stud
10. Retainer Plate Fastening Screw (4 req.)
11. Spring Retainer Plate
12. Bushing
13. Inner Spring
- 13A. Outer Spring
14. Piston
15. "U" Packing
16. Cylinder
17. * Bushing (Not shown) (Part Nos. 4, 6, 16)
18. * Bushing (Not shown) (Part No. 3)

* Mount with Loctite Retaining Compound

REPAIRS

When ordering repair parts always state the catalog number of the press and factory serial number. Since the reference or call out numbers on the parts list are duplicated on other parts lists, specify part required by giving reference number and full part name followed by this form number.

SERVICE

Should service in the nature of erection, demonstration, or repairing of any machine be requested, such service will be rendered at a rate per day plus transportation and living expenses. Direct correspondence regarding service to the attention of the Service Manager.