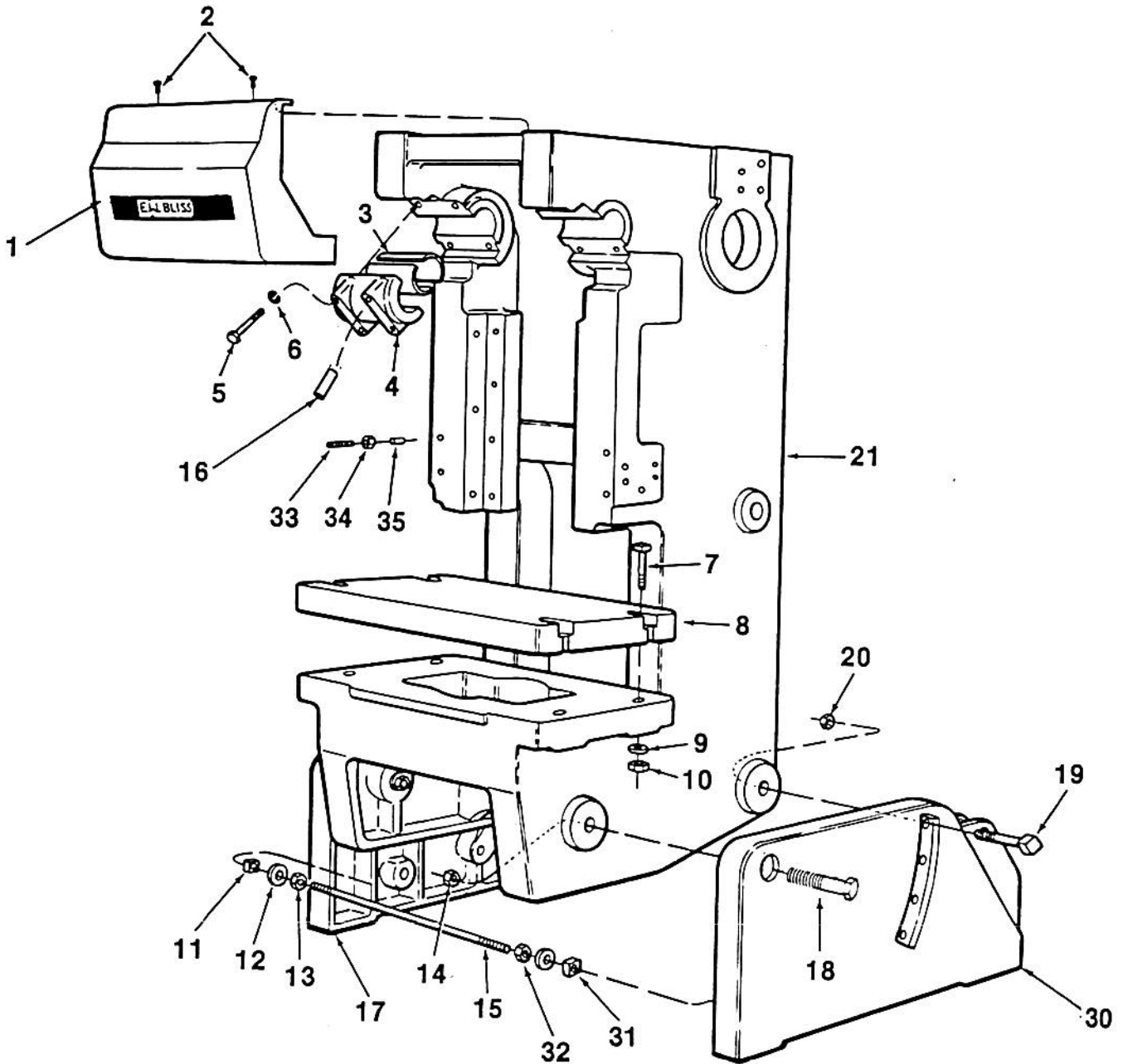


# C-22 thru C-60 SERVICE MANUAL

## FRAME UNIT



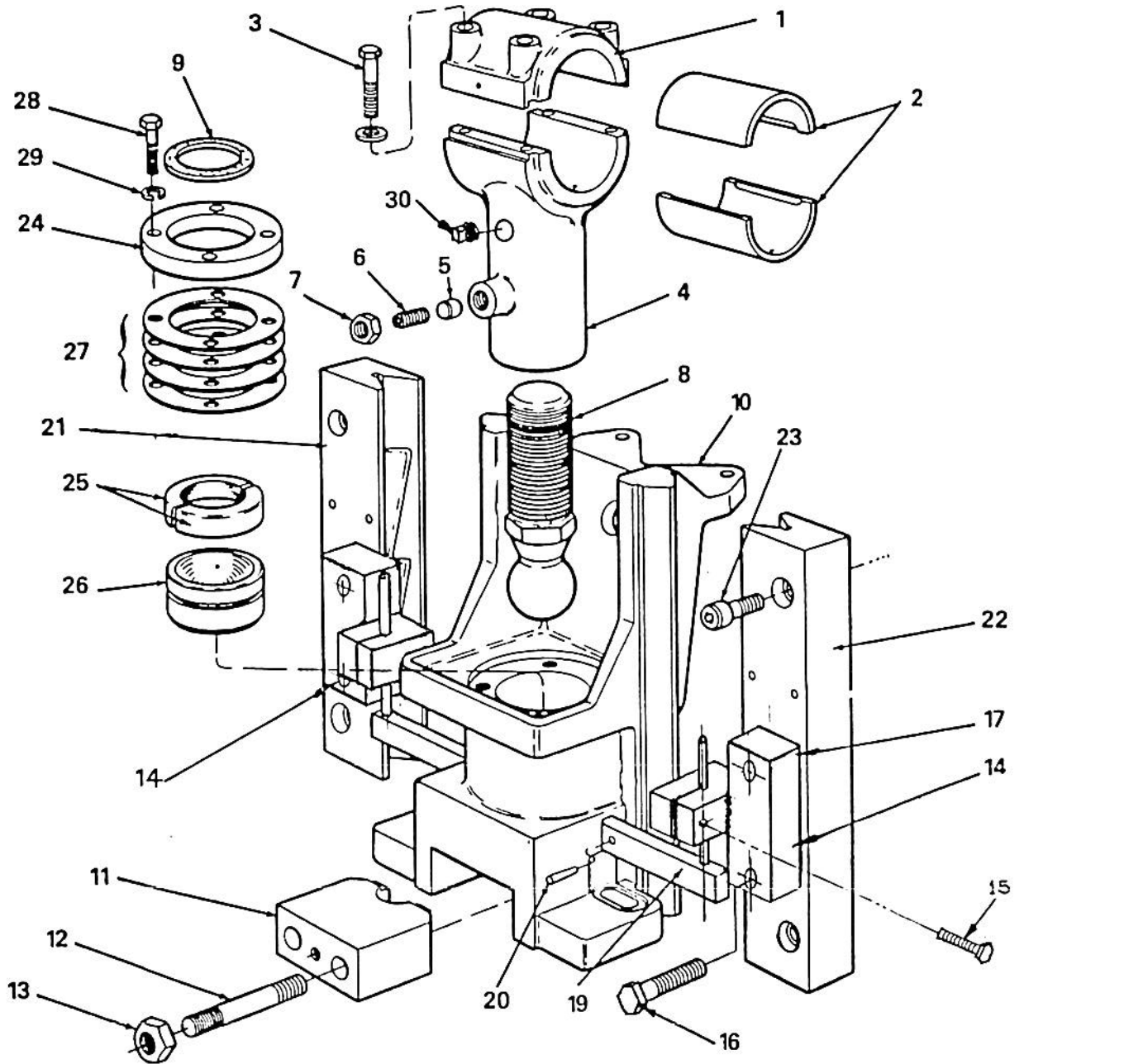
1. Front Cover
2. Socket Head Cap Screw
3. Half Bushing (Main)
4. Main Bearing Cap
5. Hex Head Cap Screw
6. Lockwasher
7. Bolster Bolt (J.I.C.)
8. Bolster
9. Washer

10. Hex Nut
11. Square Nut. L.H.
12. Washer (Plain)
13. Hex Nut L.H.
14. Hex lock Nut
15. Tie Rod
16. Dowel
17. L.H. Leg
18. Front Leg Bolt

19. Rear Leg Bolt
20. Hex Lock Nut
21. Frame
30. R.H. Leg
31. Square Nut. R.H.
32. Hex Nut R.H.
33. Square Head Screw
34. Jam Nut
35. Dowel

# C-22 thru C-60 SERVICE MANUAL

## SLIDE UNIT

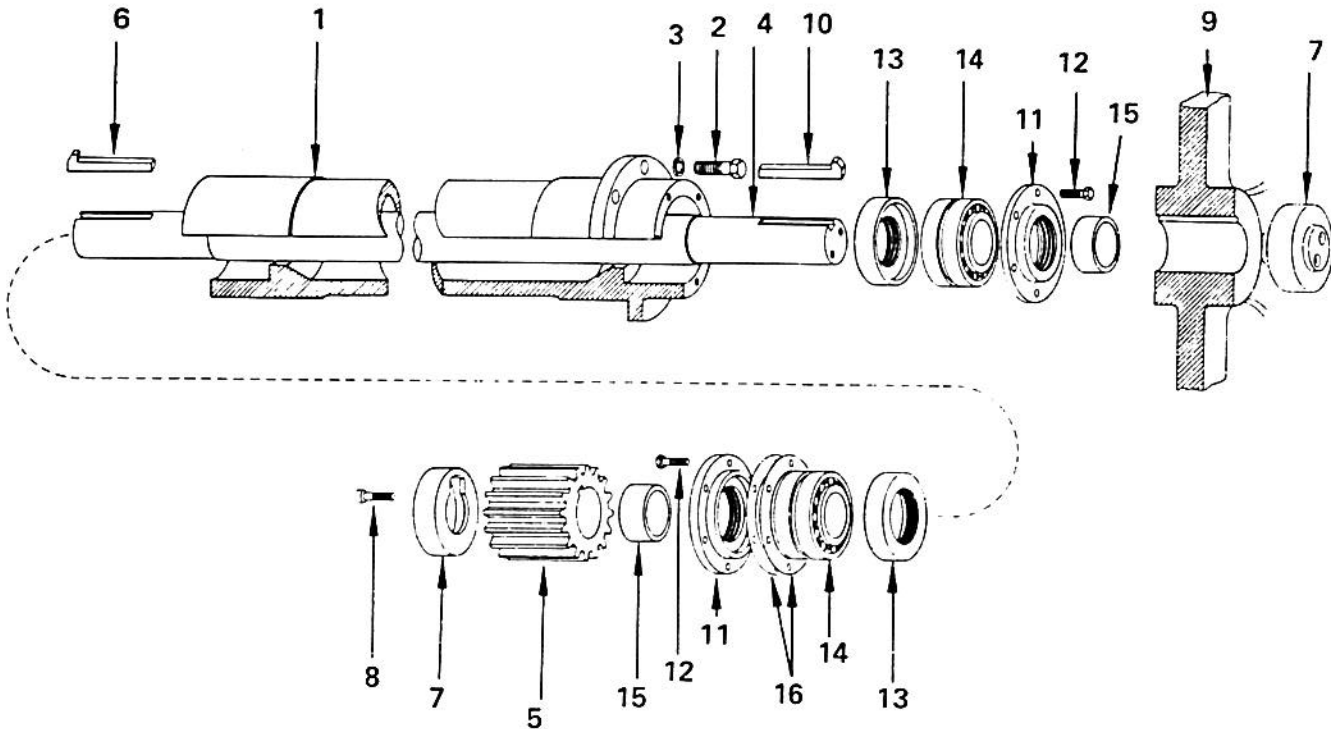


- |    |  |     |                        |     |                           |
|----|--|-----|------------------------|-----|---------------------------|
| 1. | Connection sleeve cap  | 9.  | Felt washer            | 20. | Knockout bar pin          |
| 2. | Connection sleeve bushing<br>(replacements furnished in<br>matched pairs only) | 10. | Slide                  | 21. | Left hand gib             |
| 3. | Connection cap screw   | 11. | Slide Cap              | 22. | Right hand gib            |
| 4. | Connection sleeve  | 12. | Slide Cap Stud         | 23. | Main gib screw            |
| 5. | Locking plug   | 13. | Slide Cap Stud Nut     | 24. | Ball cap                  |
| 6. | Connection plug screw  | 14. | Knockout bracket       | 25. | Ball cap bushing          |
| 7. | Connection plug nut  | 15. | Hex Hd Screw           | 26. | Ball seat bushing         |
| 8. | Connection screw   | 16. | Knockout bracket screw | 27. | Shims                     |
|    |  | 17. | Knockout Pin           | 28. | Ball cap screw            |
|    |  | 18. |                        | 29. | Ball cap screw lockwasher |
|    |  | 19. | Knockout bar           | 30. | Plug                      |

# E.W. BLISS

## BACKSHAFT UNIT (GEARED PRESSES ONLY)

(VIEW FROM REAR OF PRESS)



1. Backshaft Bearing Housing
2. Backshaft Bearing Housing Cap Screw
3. Backshaft Bearing Housing Cap Screw Lockwasher
4. Main Driveshaft
5. Main Drive Pinion
6. Main Drive Pinion Key
7. Shaft End Cover
8. Shaft End Cover Screw
9. Flywheel
10. Main Driveshaft Key (Flywheel End)
11. Main Driveshaft Bearing End Collar (Retainer)
12. Main Driveshaft Bearing End Collar Screw
13. Main Driveshaft Bearing Collar
14. Main Driveshaft Bearing
15. Main Driveshaft Bearing Spacer
16. Shims

# C-22 thru C-60 SERVICE MANUAL

## INCLINING MECHANISM - RATCHET TYPE (OPTIONAL)

