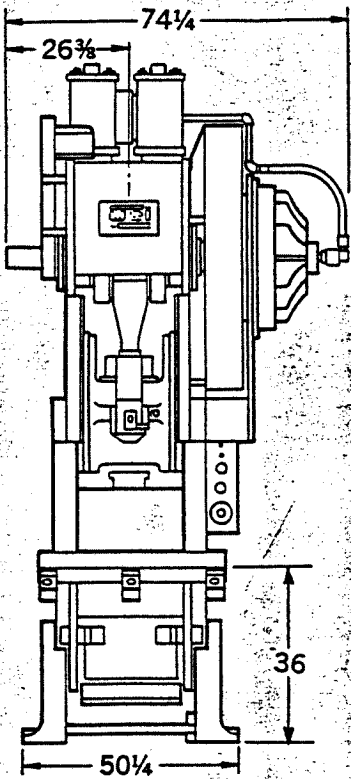
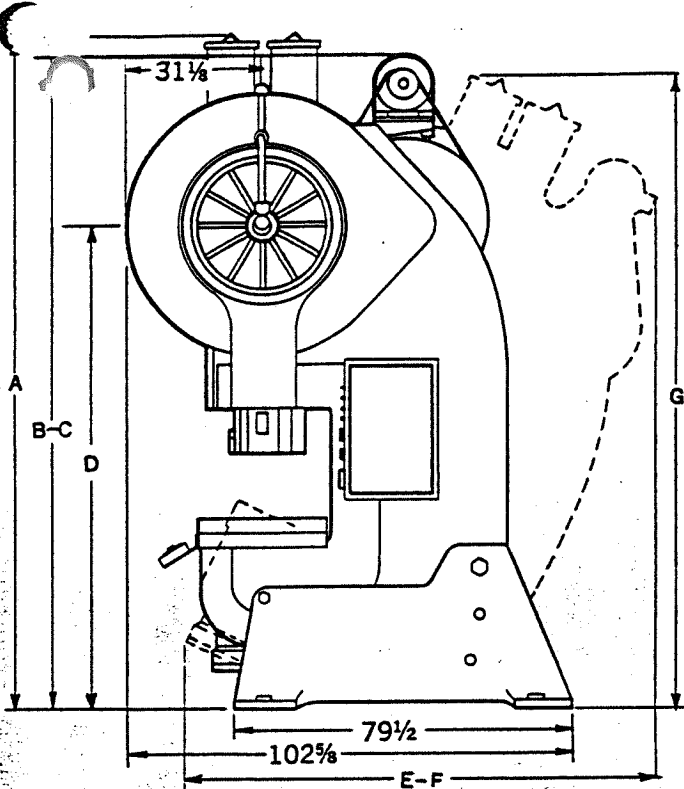
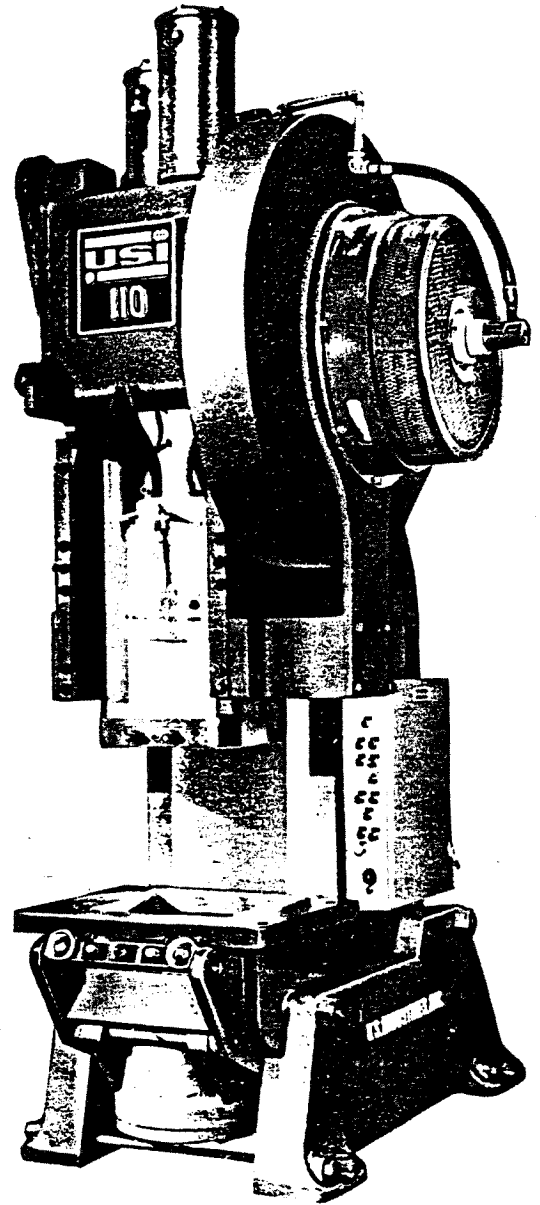


FRAME DIMENSIONS



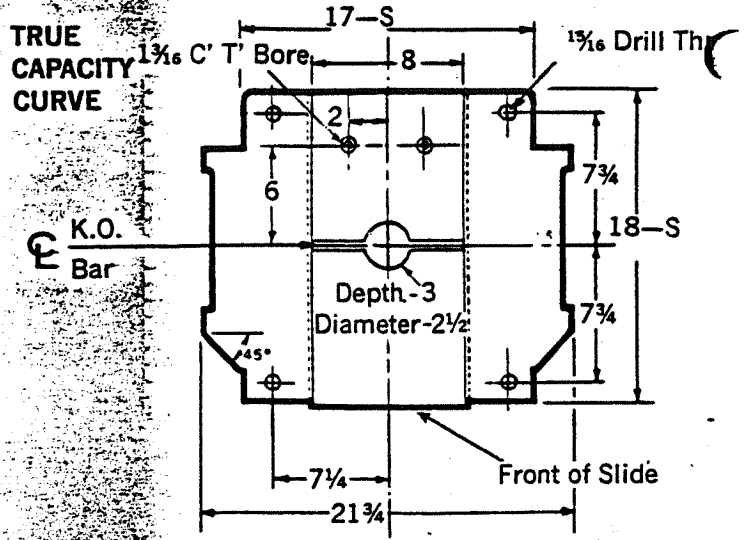
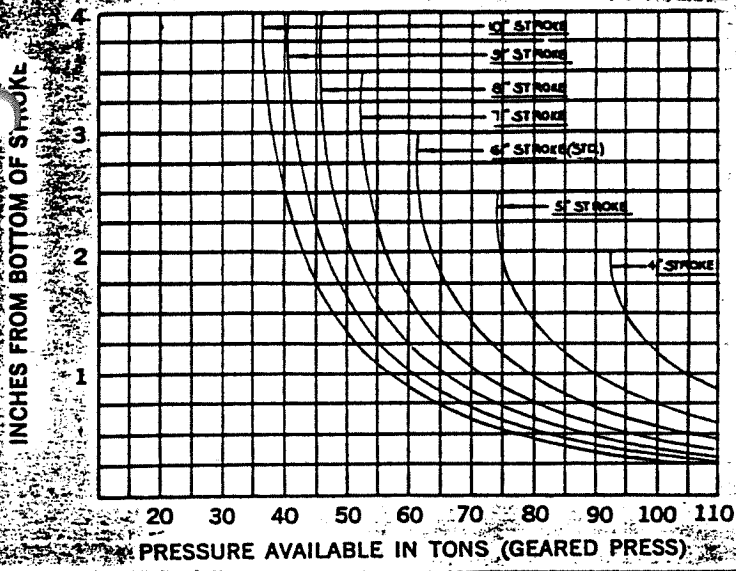
	A	B	C	D	E	F	G
		Std Mtr.	Var. Sp. Mtr.		Std Mtr.	Var. Sp. Mtr.	
Standard	151 3/4	144 1/2	146 1/2	106 3/4	96 1/2	109 3/4	144 3/4
High Body	155 3/4	148 1/2	150 3/4	110 3/4	98	111 3/4	147 3/4



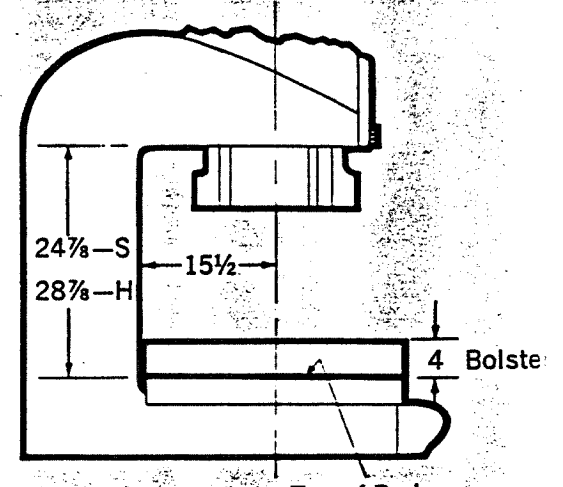
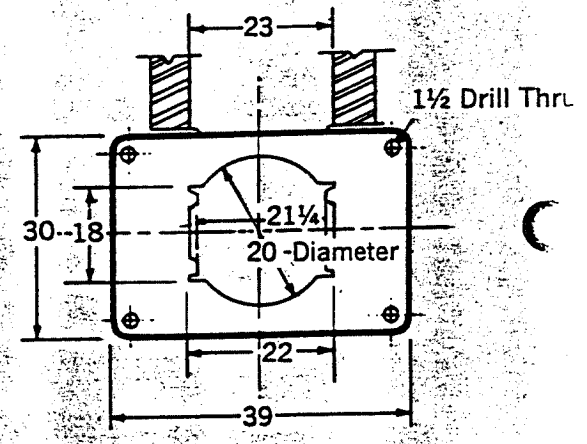
SHIPPING WEIGHT OF ASSEMBLED STANDARD BODY 110 TON CAPACITY PRESS WITH COUNTER-BALANCE CYLINDER AND BOLSTER IN PLACE:

FLYWHEEL 23,500 pds.
GEARED 24,000 pds.

110 TON HEAVY SERIES OPEN DRAFT



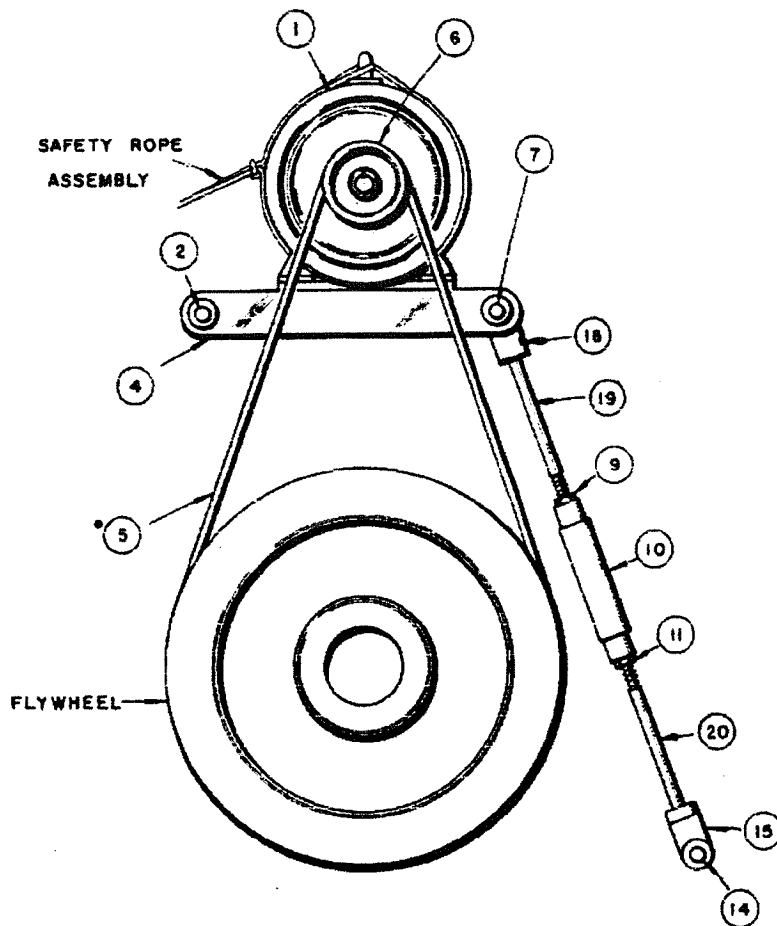
S = Standard Slide
F = Flanged Slide



S = Standard Body
H = High Body

SPECIFICATIONS	GEARED	NON-GEARED
Capacity	110 tons	110 tons
Type of Frame	Steel Weldment	Steel Weldment
Bolster Size (LR x FB)	39 x 30	39 x 30
Single Speed		
Strokes per Minute, Std.	40	90
Strokes per Minute, Max.	60	120
Variable Speed		
Strokes per Minute	41-82	80-160
Slide Adjustment	5	5
Motor Horsepower	10	10
Motor RPM	1800	900
Driveshaft RPM (@ Std. SPM)	328	—
Flywheel Diameter	35	52
Flywheel Face	6 $\frac{1}{2}$	8
Flywheel Weight, Pounds	1,765	1,600
Main Gear Pitch Diameter	55.6	—
Crankshaft at Main Bearings, Diameter	5 $\frac{1}{2}$	5 $\frac{1}{2}$
Crankshaft at Crank Pin, Diameter	7 $\frac{1}{2}$	7 $\frac{1}{2}$
Cushions, Optional		
Double Cylinder, Diameter	10-18	10-18
Single Cylinder, Diameter	18	18
Capacity at 100 psi		
Double, Tons	16.5	16.5
Single, Tons	12.7	12.7
Cushion Stroke	5	5
Stroke, Inches	Standard Body Shutheight	High Body Shutheight
3	19 $\frac{1}{4}$	23 $\frac{1}{4}$
4	19 $\frac{1}{4}$	23 $\frac{1}{4}$
5	18 $\frac{1}{4}$	22 $\frac{1}{4}$
6 (Std.)	18 $\frac{1}{4}$	22 $\frac{1}{4}$
7	17 $\frac{1}{4}$	21 $\frac{1}{4}$
8	16 $\frac{1}{4}$	20 $\frac{1}{4}$
9	15 $\frac{1}{4}$	19 $\frac{1}{4}$
10	14 $\frac{1}{4}$	18 $\frac{1}{4}$
Shutheight—stroke down, adjustment up (face of slide to top of bed)		
Flanged Slide (inches shutheight reduced)	5	5

1974



MOTOR DRIVE

150 Ton OBI

STANDARD

R-10186

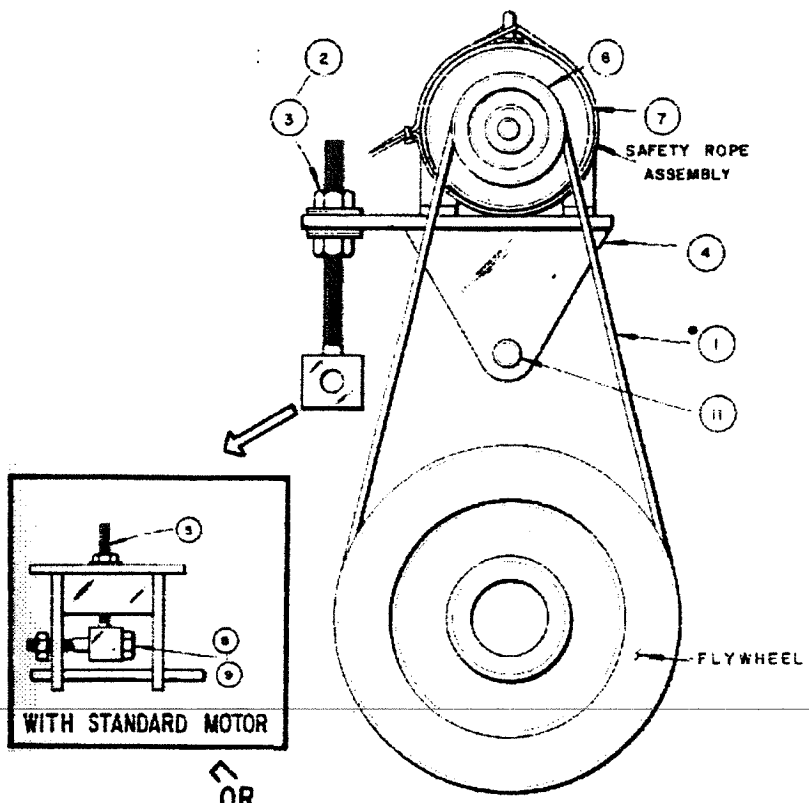
- 1. Main Motor
- 2. Pivot Pin
- 5.* "V"-Belts, 'B' Size
- 6. Motor Sheave
- 7. Motor Base Pin
- 9. Hex Nut, R.H.

- 10. Turnbuckle
- 11. Hex Nut, L.H.
- 14. Clevis Pin
- 15. Clevis
- 18. Motor Base Support
- 19. Adj. Rod, Upper
- 20. Adj. Rod, Lower

MOTOR DRIVE FLYWHEEL

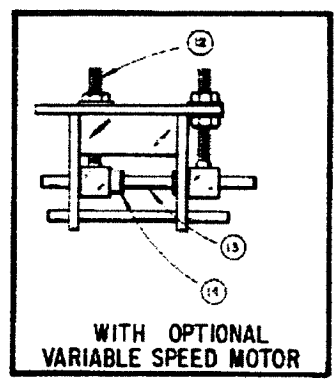
110 Ton OBI

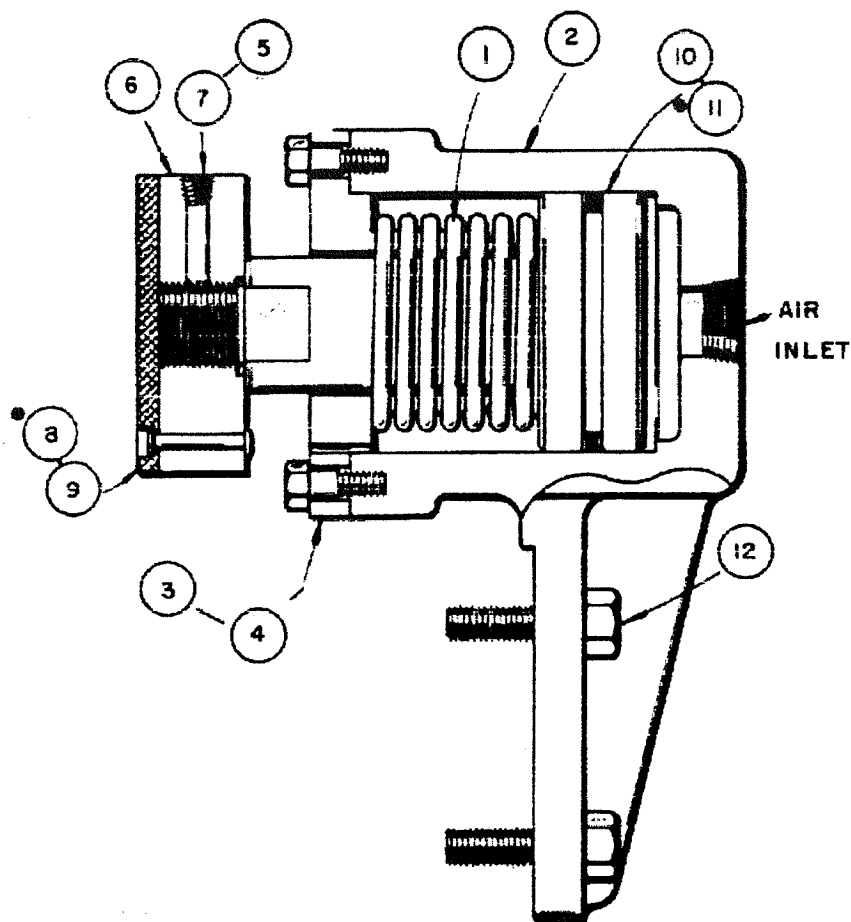
VARIABLE SPEED
OPTIONAL



R-8582

- 1.* "V-Belts
- 2. Nut (2)
- 3. Spher. Washer (2)
- 4. Motor Base
- 5. Support
- 6. Motor Sheave
- 7. Motor
- 8. Cap Screw
- 9. Locknut
- 11. Pin,
- 12. Support (2)
- 13. Pin (2)
- 14. Collar (2)





FLYWHEEL BRAKE GEARED

110 TON OBI

OPTIONAL

R-6686

- 1. Spring
- 2. Housing
- 3. Cap
- 4. Hex Hd. Cap Screw
- 5. Pipe Plug
- 6. Brake Shoe

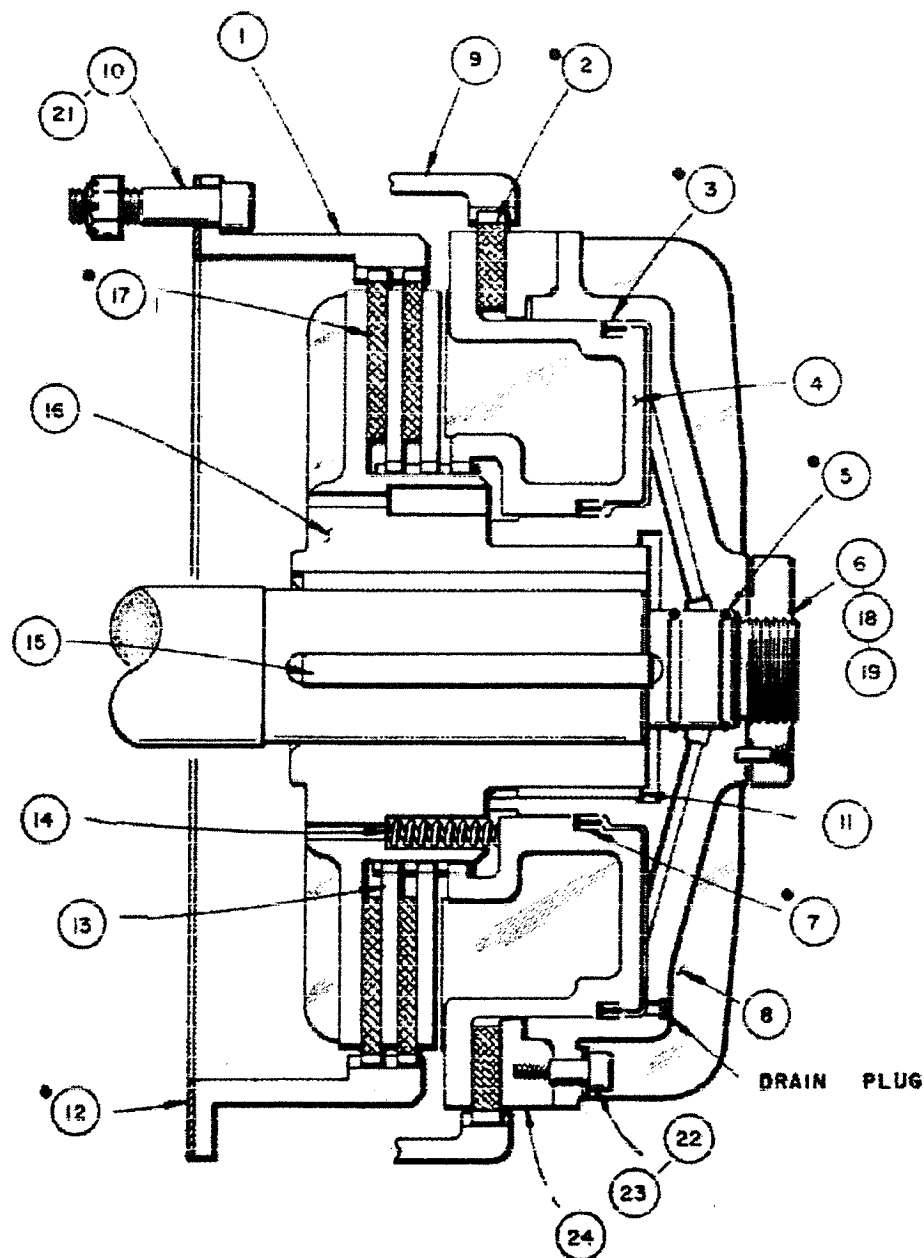
- 7. Dowel Pin
- 8.* Lining
- 9. Rivet
- 10. Piston
- 11.* Packing, Palmetto
- 12. H.H.CapScrew (4)
Air Inlet

CLUTCH & BRAKE GEARED OR FLYWHEEL

110 Ton OBI

STANDARD

R-8913

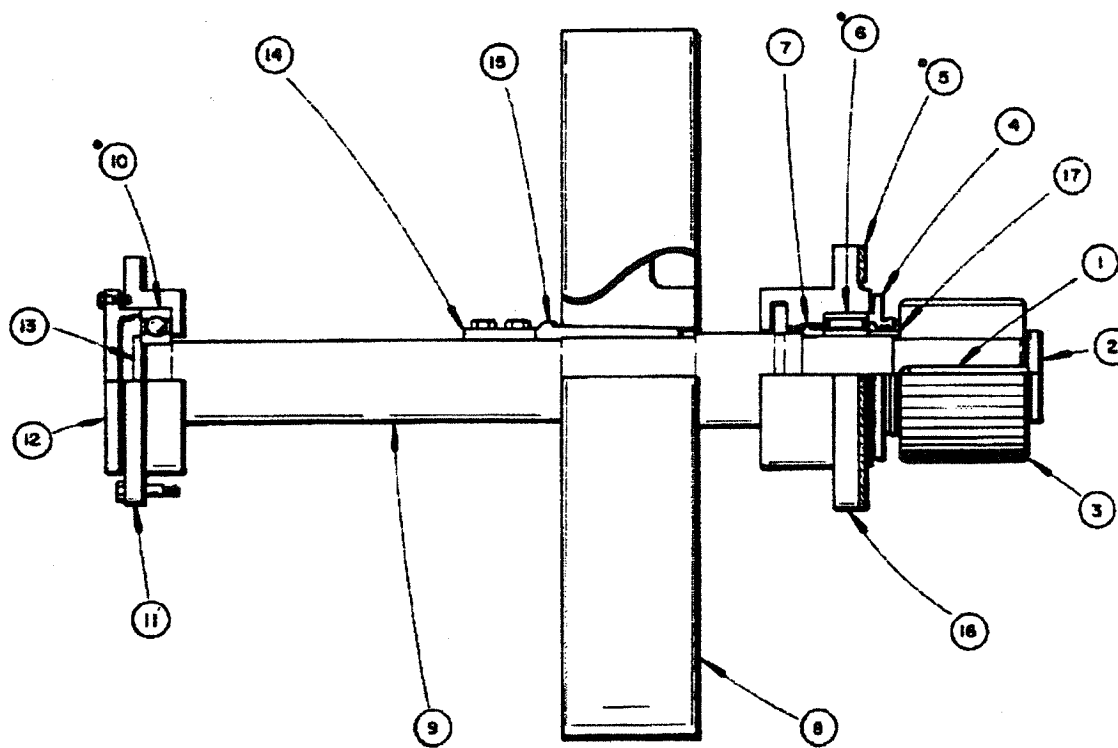


1. Clutch Drive Ring
- 2.* Brake Fric. Disc
- 3.* Outer "E"-Packing
4. Piston
5. "O"-Ring.
6. Locknut.
7. Inner "E"-Packing
8. Clutch Cylinder
9. Brake Ring
10. Cap Screw
11. Key
- 12.* Gasket,
13. Interm. Disc (2)
14. Spring
15. Key
16. Clutch Drive Hub
- 17.* Clutch Fric Disc, 2
18. Dowel Pin
19. Pipe Plug
21. Locknut
22. Shoulder Screw
23. Shim
24. Spacer

110

DRIVESHAFT GEARED

110 Ton OBI

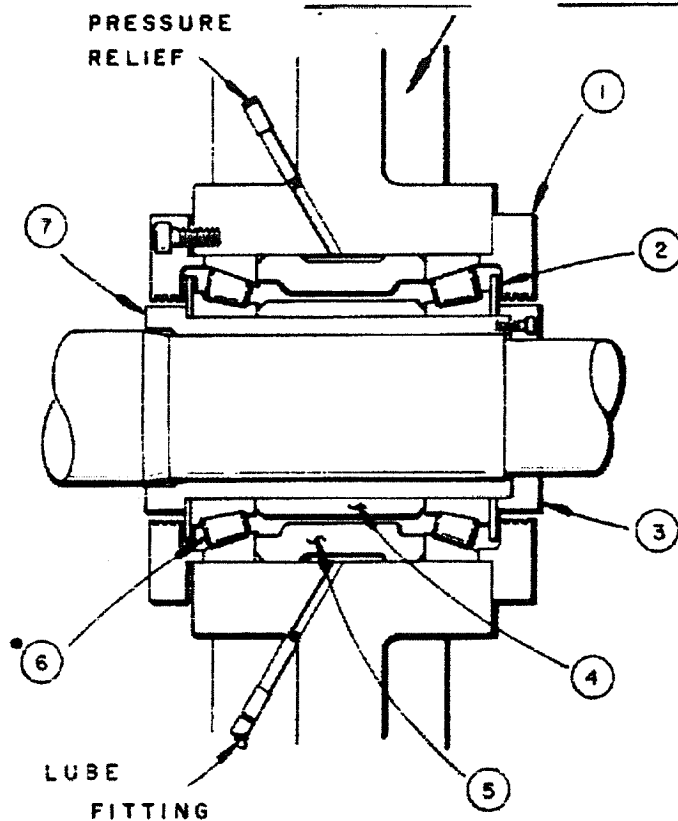


R-8834
Ref. Drwg.

- 1. Key (2),
- 2. End Plate
- 3. Pinion,
- 4. Retainer
- 5*. Gasket,
- 6.* Bearing,
- 7. Bearing Spacer
- 8. Flywheel
- 9. Driveshaft

- 10.*Bearing,
- 11. Bearing Housing, LH
- 12. Bearing Retainer
- 13. End Plate
- 14. Key
- 15. Gib Taper Key
- 16. Bearing Housing, RH
- 17. Spacer

MAIN GEAR OR FLYWHEEL



MAIN GEAR BEARING OR FLYWHEEL BEARING

110 Ton OBI

STANDARD

R-8838

Lube fitting - 1/8"

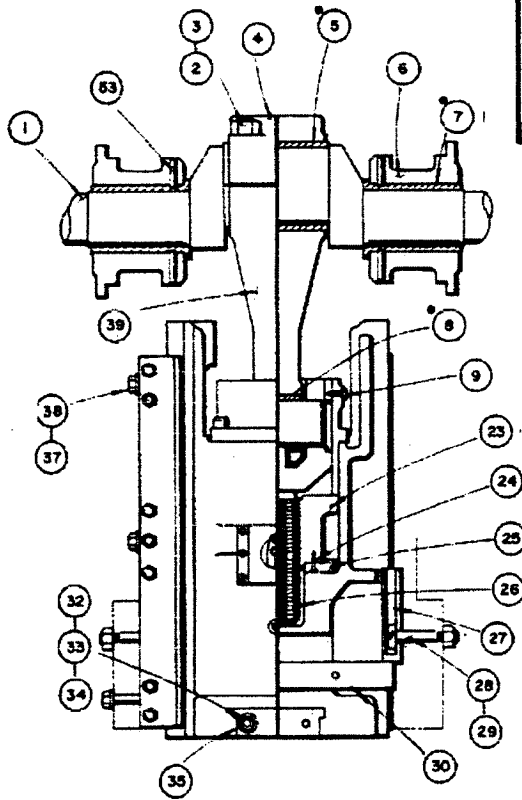
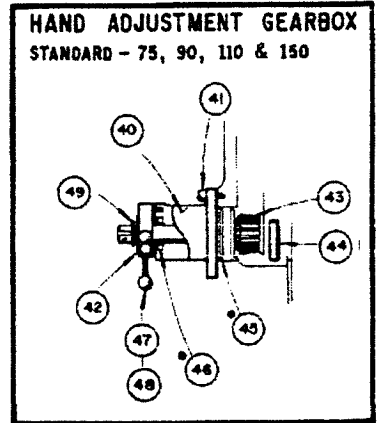
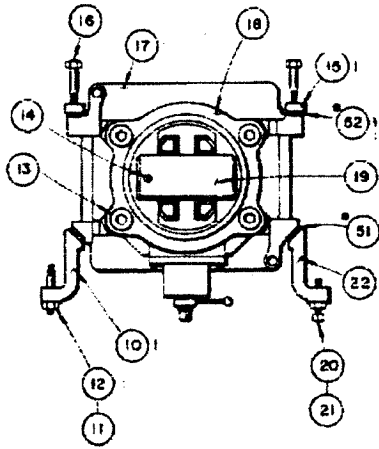
- 1. Retainer (2)
- 2. Slinger Plate (2)
- 3. Retainer
- 4. Cone Spacer
- 5. Cup Spacer
- 6.* Bearing (2)

7. Bearing Sleeve

SLIDE ASSEMBLY 110 Ton OBI

STANDARD

R-10278



Slide Assembly 110 Ton Obi R-10278

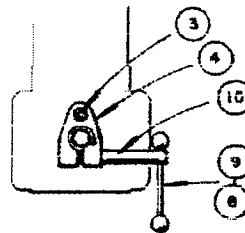
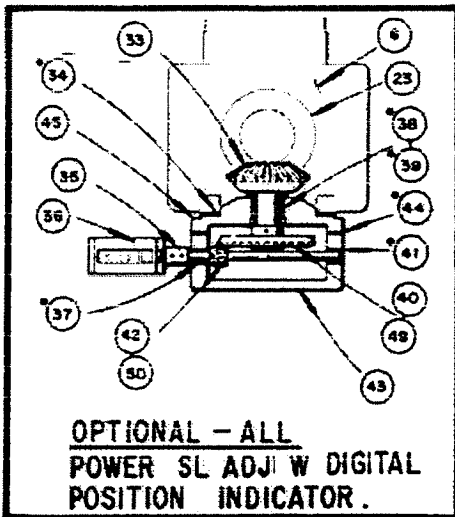
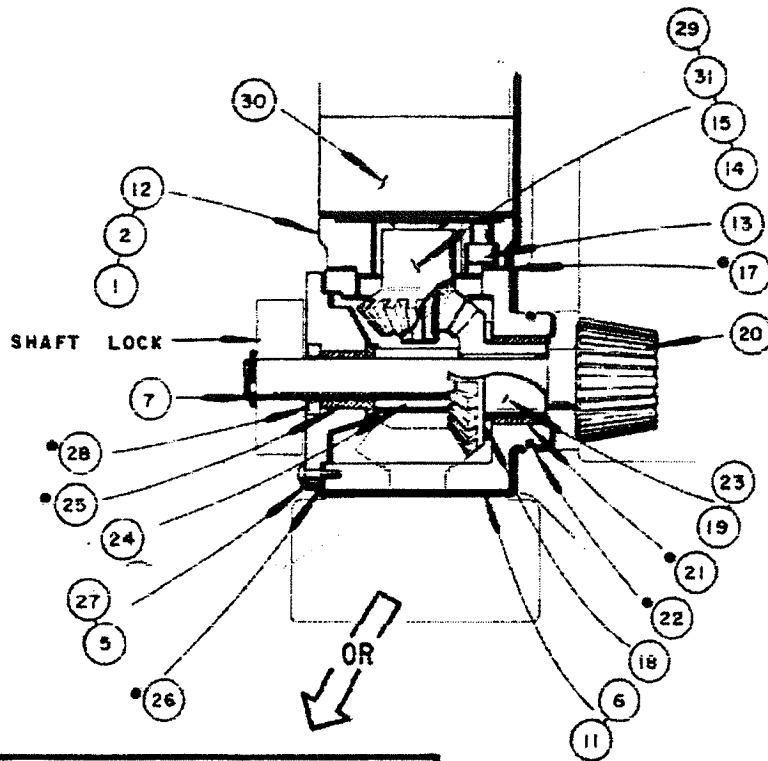
- | | |
|---------------------------|--|
| 1. Crankshaft | 27. Knockout Bar Stop (2) |
| 3. Hex Hd.Cap.Scr. | 28. T-Bolt (2) |
| 4. Connection Cap | 29. Nut (2) |
| 5.* Bushing | 30. Knockout Bar |
| 6. Bearing Retainer (2) | 32. Soc.Hd.Cap Screw |
| 7.* Bushing (2) | 35. Slide Cap |
| 8.* Wrist Pin Bushing | 37. Plain Washer (6) |
| 9. Stop Screw | 38. Cap Screw, (6) |
| 10. Front Gibs (2) | 39. Connection Strap |
| 11. Hex Nut | 40. Housing |
| 12. Stud | 41. Cap Screw (6) |
| 13. Cap Screw | 42. Shaft Lock, Note 1 |
| 14. Dowel Pin | 43. Bevel Pinion |
| 15. Rear Gibs (2) | 44. Dowel Pin (4) |
| 16. Hex.Hd.Cap Screw (8) | 45.* 'O'-Ring. |
| 17. Slide | 46.* Oil Seal, |
| 18. Slide Adjust Housing | 47. Handle Stud, |
| 19. Wrist Pin, | 48. Control Knob, |
| 20. Sq.Hd.Jack Screw | 49. Retaining Ring, |
| 21. Jam Nut (6) | 51. Wear Strip (2, front) Standard Sl. |
| 23. Connection Screw Nut | 52. Wear Strip (2, rear) Standard Sl. |
| 24. Flat Hd.Mach.Scr. (4) | Wear Strip (2, front) Flanged Sl. |
| 25. Bevel Gear, | Wear Strip (2, rear) Flanged Sl. |
| 26. Connection Screw | |

POWER SLIDE ADJUSTMENT GEARBOX

110 Ton OBI

OPTIONAL

R-10466



SHAFT LOCK ASSY!

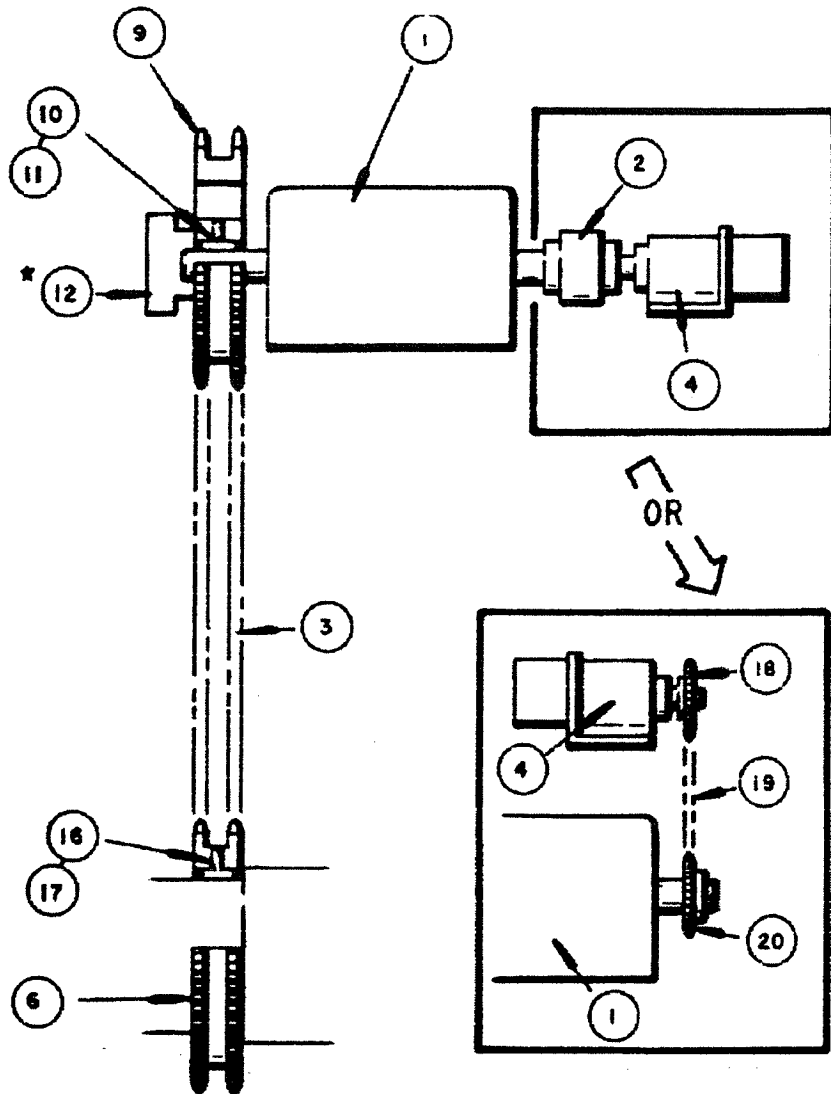
1. Soc.Hd.Cap Screw (4)
2. Oil Cup,
3. Cap Screw
4. Shaft Lock
5. Cap Screw (6)
6. Gear Housing
7. Retaining Ring,
8. Knob (2)
9. Handle
10. Lock Stud
11. Cap Screw
12. Motor Base
13. Cap Screw (3)
14. Roll Pin,
15. Set Screw
- 17.* Gasket,
18. Spacer
19. Key
20. Bevel Pinion Shaft,
- 21.* Bushing
- 22.* "O"-Ring
23. Bevel Gear Pinion,
24. Spacer
- 25.* Bushing

- 26.* Gasket
- 28.* Oil Seal,
30. Air Motor,
- 32.
- 34.* Gasket
36. Counter
- 38.* Bushing
40. Bevel Gear
42. Bevel Pinion
- 44.* Gasket
49. Roll Pin

27. Retainer
29. Bevel Pinion,
31. Key
33. Bevel Pinion
35. Coupling
- 37.* Bushing
- 39.* Oil Seal
- 41.* Bushing
43. Housing
45. Housing Cap
50. Roll Pin

LIMIT SWITCH DRIVE

110 Ton OBI
STANDARD



R-8971

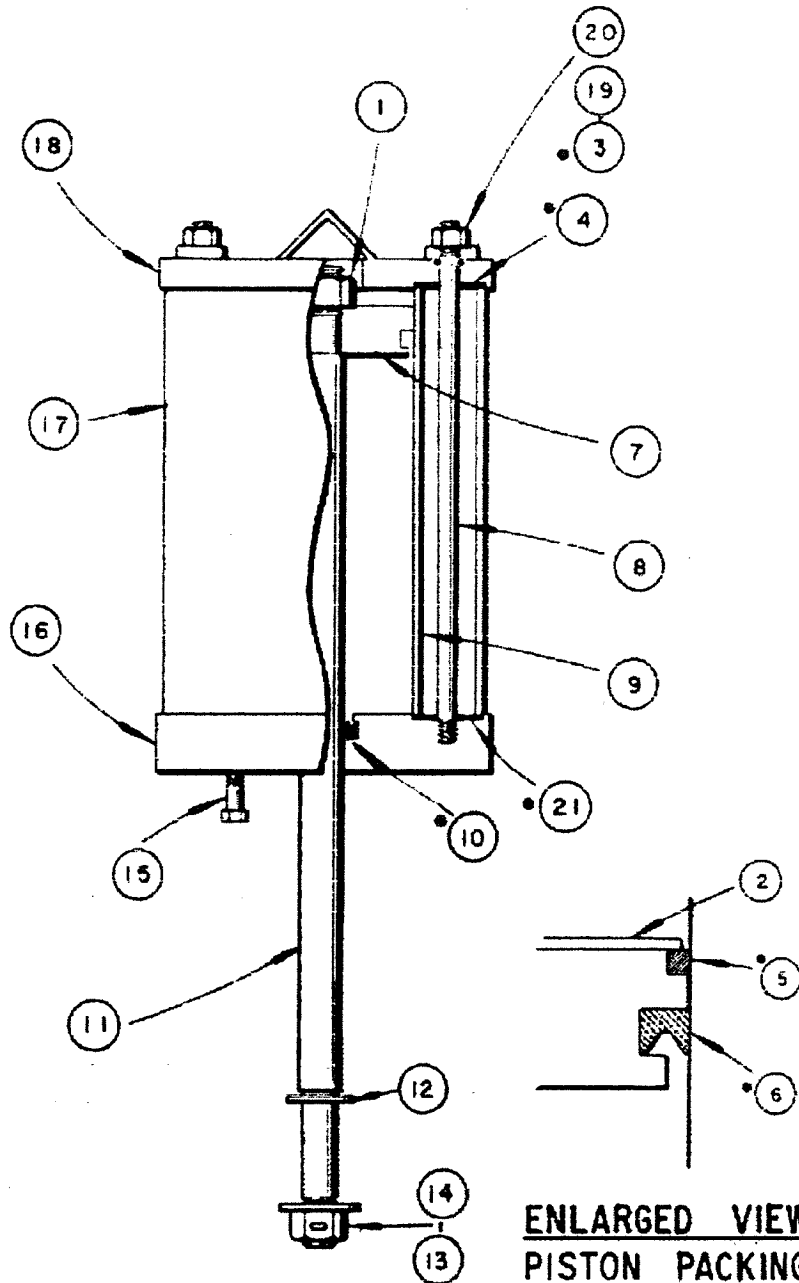
- 1. Limit Switch;
- 2. Coupling
- 3. Chain,
- 4. Motion Detector,
- 6. Drive Sprocket
- 9. Driven Sprocket
- 10. Set Screw
- 11. Key
- 12. External Adjust Mech.
- 16. Set Screw
- 17. Key
- 18. Sprocket
- 19. Chain,
- 20. Sprocket

COUNTERBALANCE CYLINDER

110 Ton OBI

OPTIONAL

R-11076



**ENLARGED VIEW
PISTON PACKING**

1. Locknut
2. Washer
- 3.* "O"-Ring, Note 1
- 4.* Gasket.
- 5.* Felt Washer
- 6.* "U"-Packing
7. Piston
8. Tie Rod (4)
9. Inner Cylinder
- 10.* "U"-Pkg,
11. Piston Shaft
12. Washer (2)
13. Cotter Pin,
14. Locknut
15. Soc.Hd.Cap Scrw,
16. Cylinder Head
17. Outer Cylinder
18. Cylinder Cover
19. Lock Washer (4)
20. Hex Nut
21. Gasket, lower
Safety Valve,

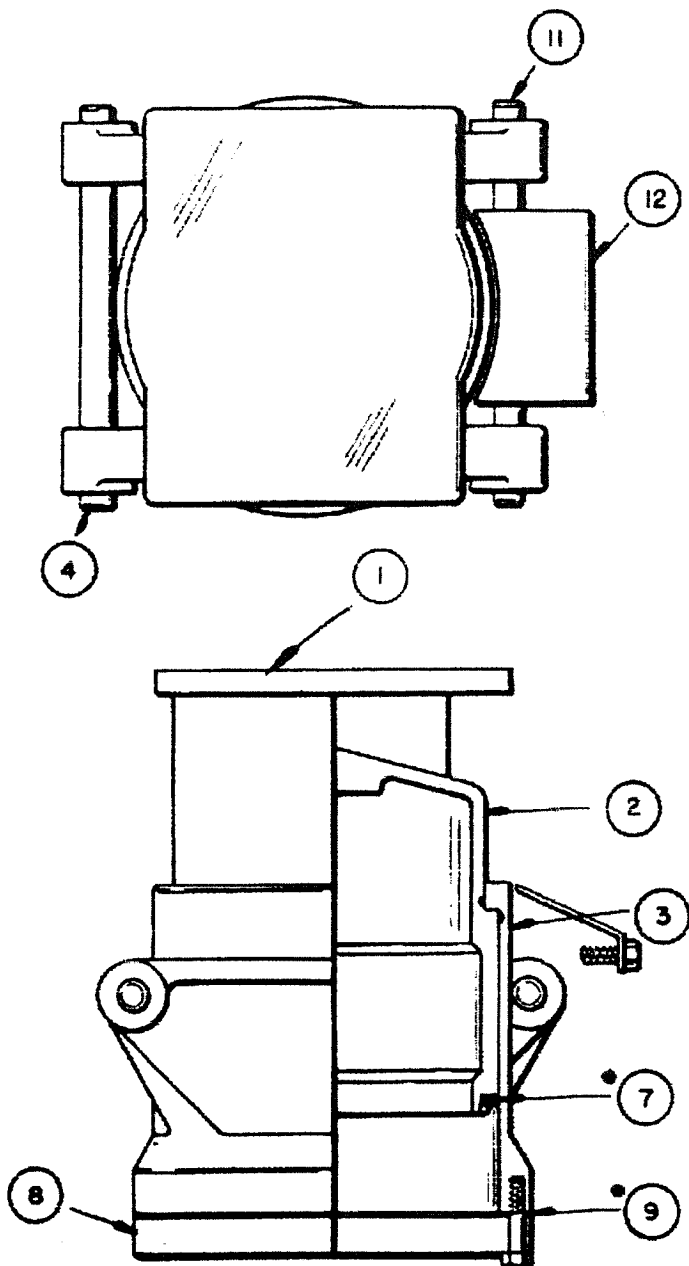
110

CUSHION

110 Ton OBI

OPTIONAL EQUIPMENT

R-11209



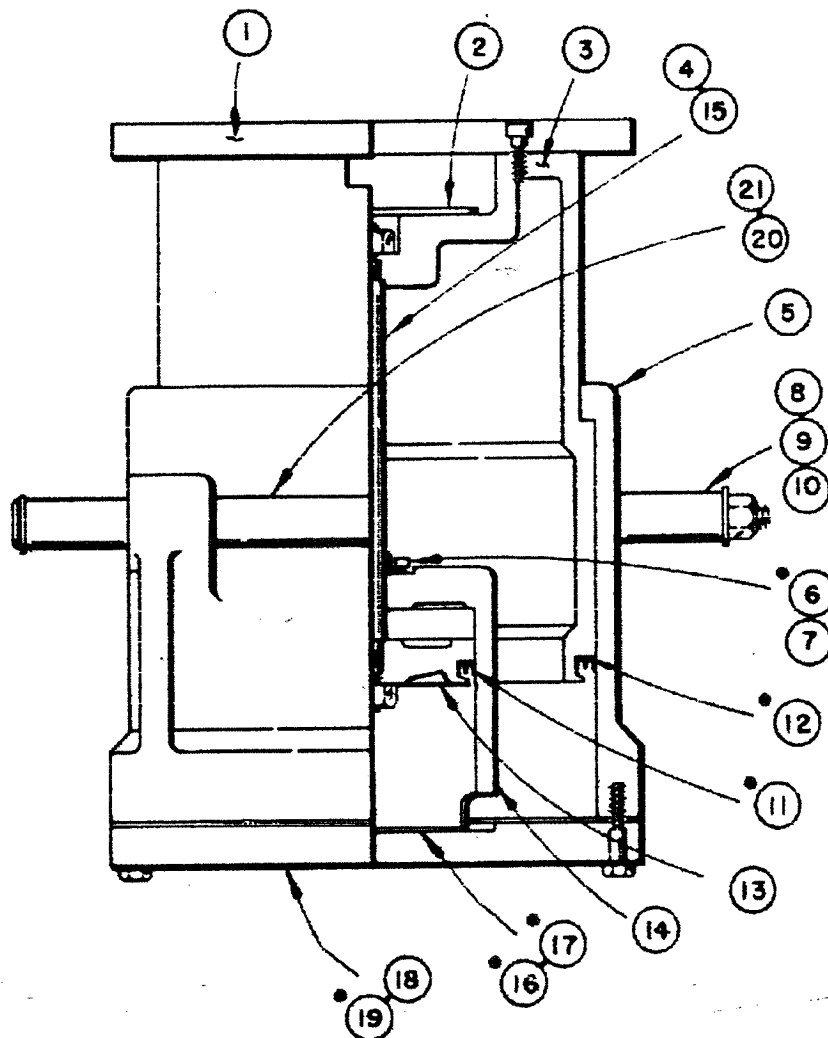
- 1. Pressure Pad
- 2. Piston
- 3. Cylinder
- 4. Support Rod - Front Retaining Rings (2)
- 7.* Packing,
- 8. Cylinder Cover H.H.C.S. (8)
- 9.* Gasket
- 11. Support Rod - Rear
- 12. Cover Shield

18" CUSHION
16.5 Tons @ 100 psi
5" stroke

DOUBLE CUSHION

110 Ton OBI

OPTIONAL



R-11106

1. Pressure Pad
2. Cover Plate
3. Outer Piston
4. Piston Shaft
5. Cylinder,
- 6.* Flange Packing,
7. Retainer
8. Washer (2)
9. Locknut (2),
10. Support Rod-Rear
- 11.* "E"-Packing,
- 12.* "E"-Packing,
13. Inner Piston
14. Cylinder,
15. Piston Nut (2)
- 16.* Gasket - Rear
- 17.* Gasket - Front
18. Cylinder Cover
- 19.* Gasket
20. Retaining Ring (2)
21. Support Rod - F

I-18"-10" CUSHION
 16.5 Tons @ 100 psi
 5" stroke