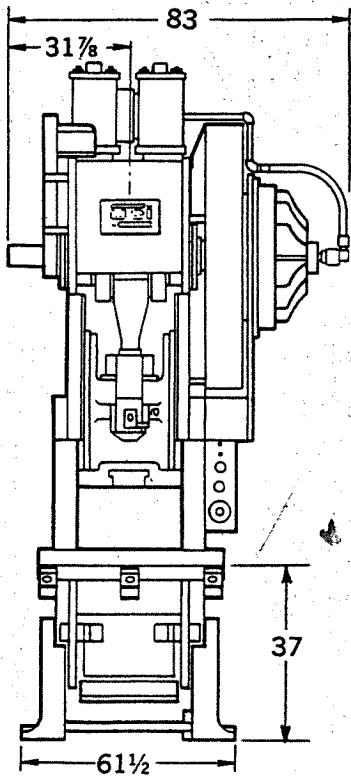
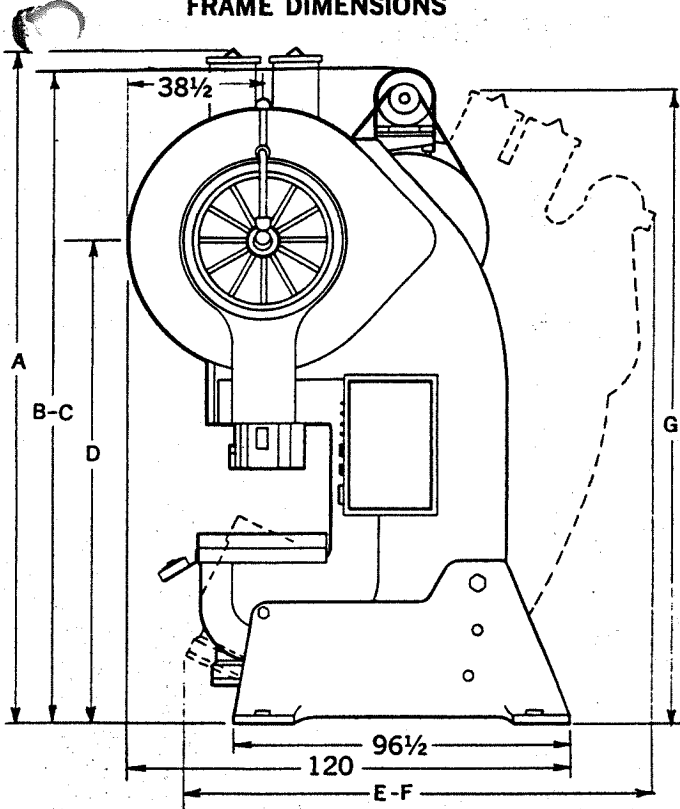


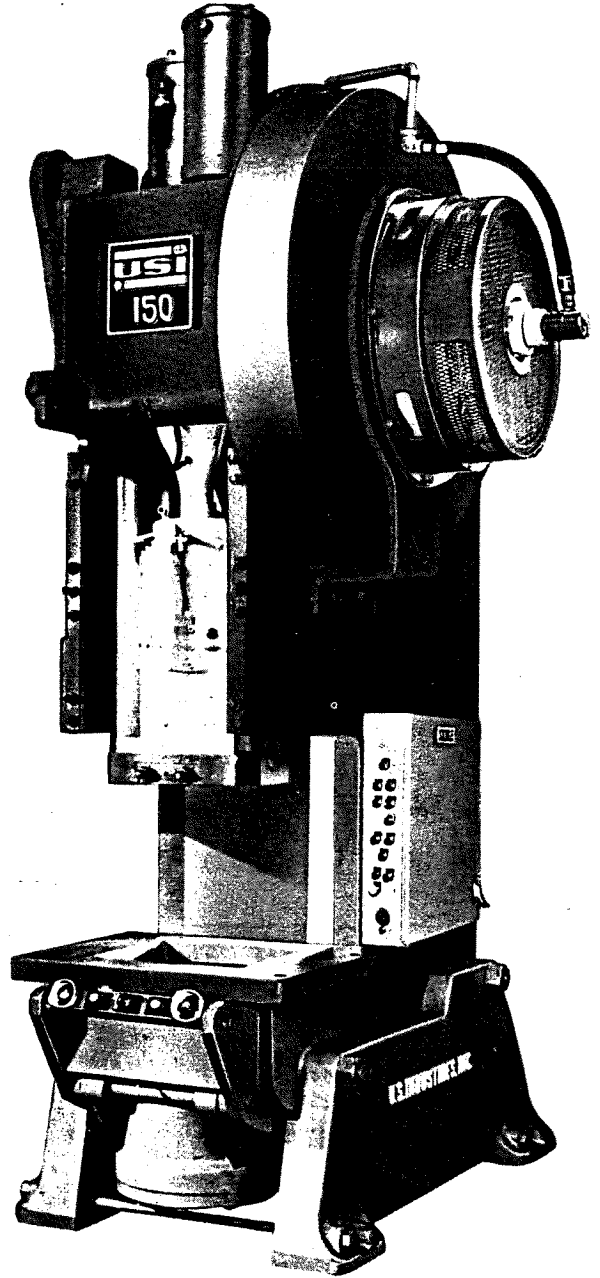
INCLINABLE PRESSES



FRAME DIMENSIONS



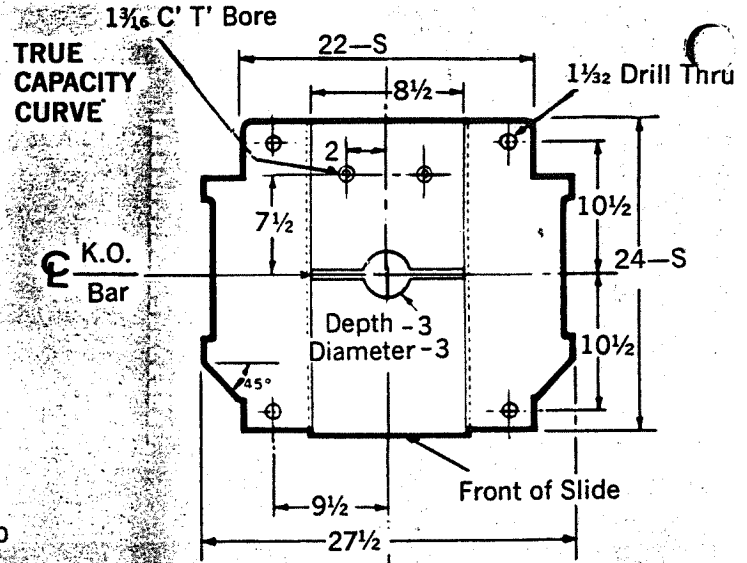
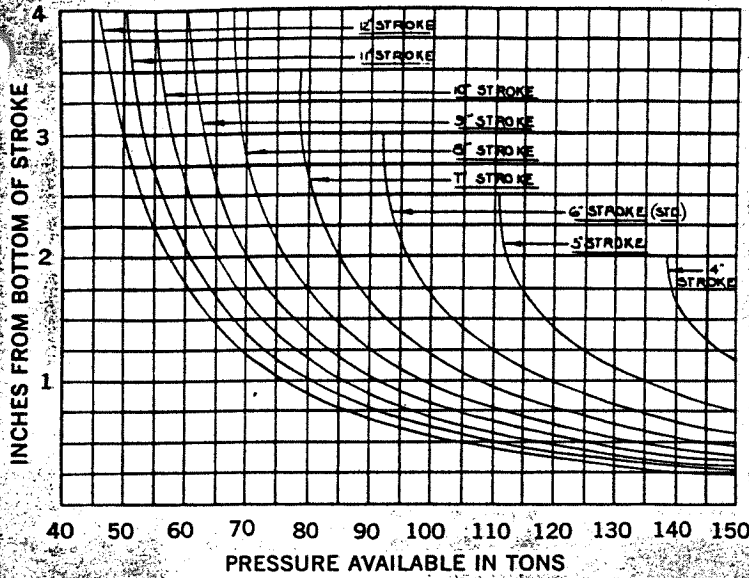
	A	B	C	D	E	F	G
Standard	171½	Std Mtr. 158%	Var. Sp. Mtr. 169¾	120%	Std Mtr. 112	Var. Sp. Mtr. 134½	166½
High Body	175½	162%	173¾	124%	113%	136	169½



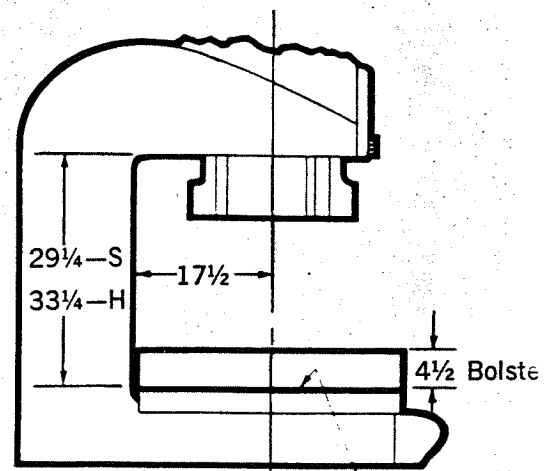
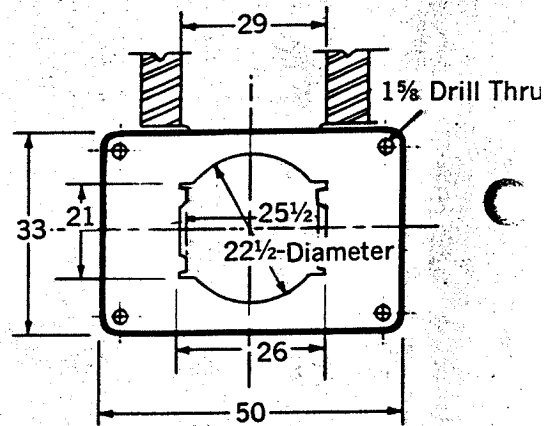
SHIPPING WEIGHT OF ASSEMBLED STANDARD BODY 150 TON CAPACITY PRESS WITH COUNTER-BALANCE CYLINDER AND BOLSTER IN PLACE:
 GEARED 39,000 pds.

150 TON HEAVY SERIES OPEN BACK

150



S = Standard Slide
F = Flanged Slide



S = Standard Body
H = High Body

SPECIFICATIONS

SPECIFICATIONS		GEARED
Capacity		150 tons
Type of Frame		Steel Weldment
Bolster Size (LR x FB)		50 x 33
Single Speed		
Strokes per Minute, Std.		35
Strokes per Minute, Max.		52
Variable Speed		
Strokes per Minute		32-64
Slide Adjustment		5
Motor Horsepower		15
Motor RPM		1800
Driveshaft RPM (@ Std. SPM)		343
Flywheel Diameter		38
Flywheel Face		6 1/2
Flywheel Weight, Pounds		2,050
Main Gear Pitch Diameter		70
Crankshaft at Main Bearings, Diameter		6 1/2
Crankshaft at Crank Pin, Diameter		8 1/2
Cushions, Optional		
Single Cylinder, Diameter		24
Capacity at 100 psi		
Single, Tons		22.6
Cushion Stroke		6

Stroke, Inches	Standard Body Shutheight	High Body Shutheight
4	22 1/2	26 1/2
5	22	26
6 (Std.)	21 1/2	25 1/2
7	21	25
8	20 1/2	24 1/2
9	19 1/2	23 1/2
10	18 1/2	22 1/2
11	17 1/2	21 1/2
12	16 1/2	20 1/2

Shutheight—stroke down, adjustment up (face of slide to top of bed)

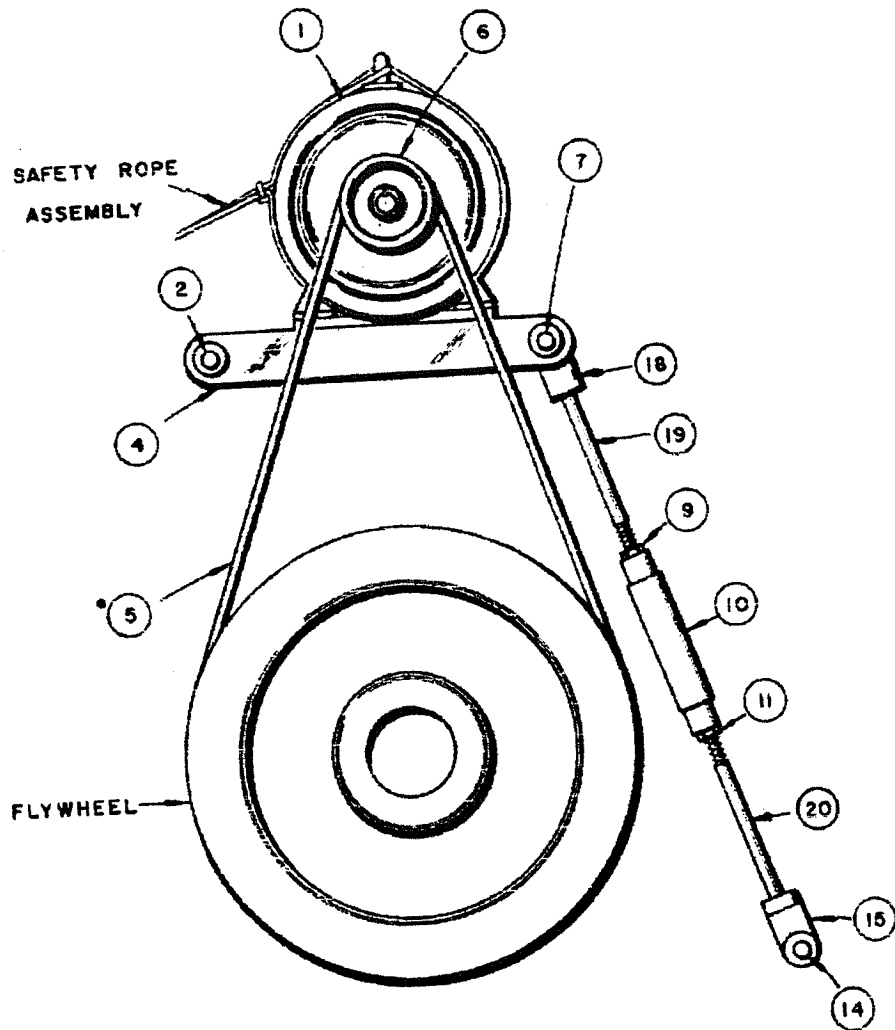
Flanged Slide (inches shutheight reduced) 5

10711

MOTOR DRIVE

150 Ton OBI

STANDARD



R-10186

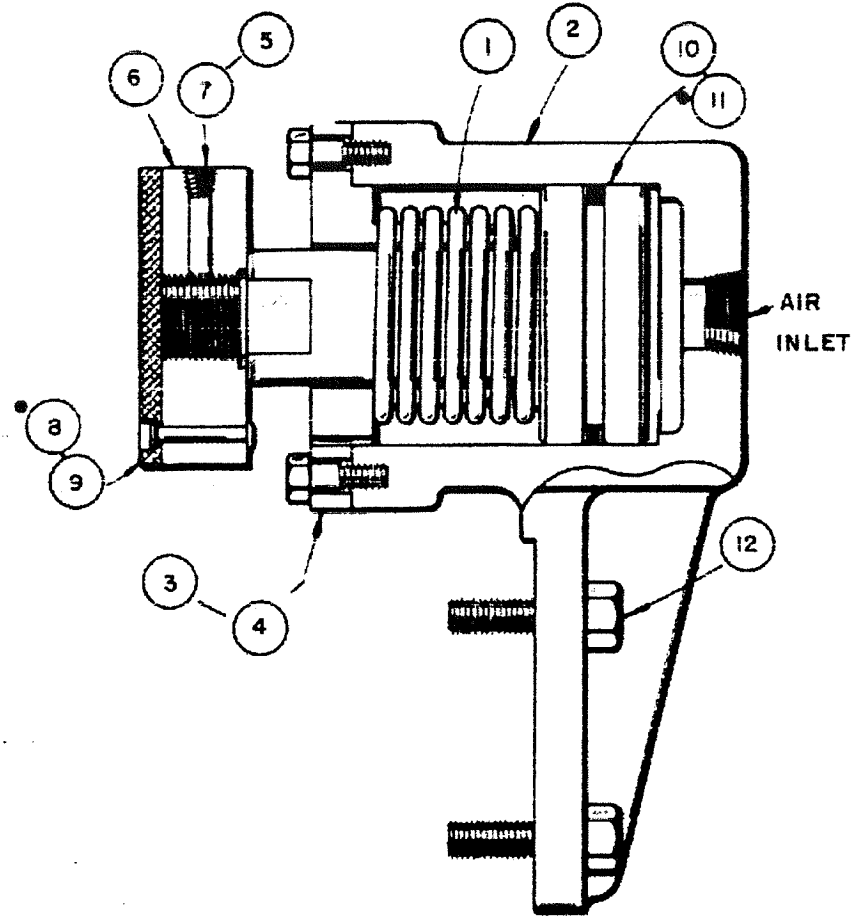
- 1. Main Motor
- 2. Pivot Pin
- 5. * "V"-Belts,
- 6. Motor Sheave
- 7. Motor Base Pin
- 9. Hex Nut, R.H.

- 10. Turnbuckle
- 11. Hex Nut, L.H.
- 14. Clevis Pin
- 15. Clevis
- 18. Motor Base Support
- 19. Adj. Rod, Upper
- 20. Adj. Rod, Lower

**FLYWHEEL BRAKE
GEARED**

150 Ton OBI

OPTIONAL



- 1. Spring
- 2. Housing
- 3. Cap
- 4. H.H.C.S.cr.
- 5. Pipe Plug,
- 6. Brake Shoe

- 7. Dowel Pin,
- 8.* Lining
- 9. Rivet (4)
- 10. Piston
- 11.* Packing, Palmetto
- 12. Hex Hd.Cap Screw (4)

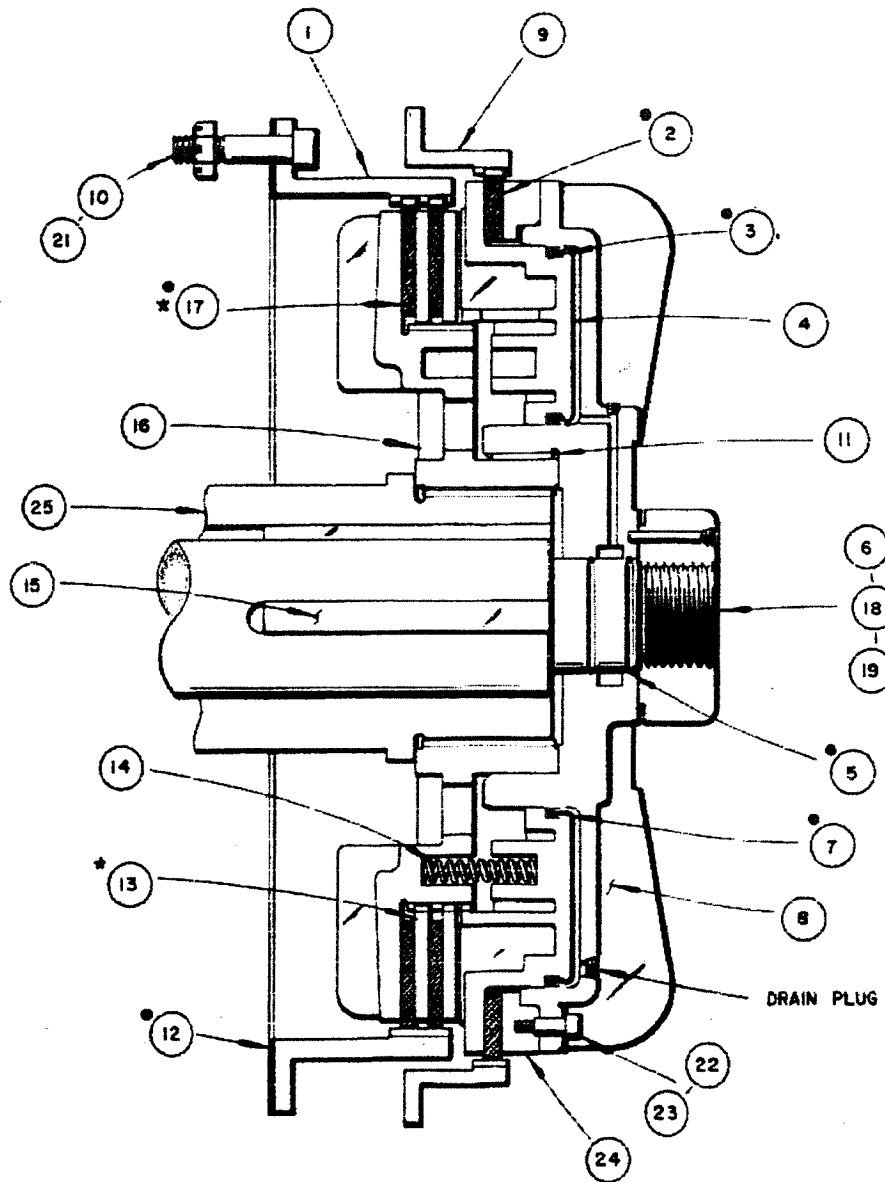
R-6686

CLUTCH & BRAKE

150 Ton OBI

STANDARD

R-8426

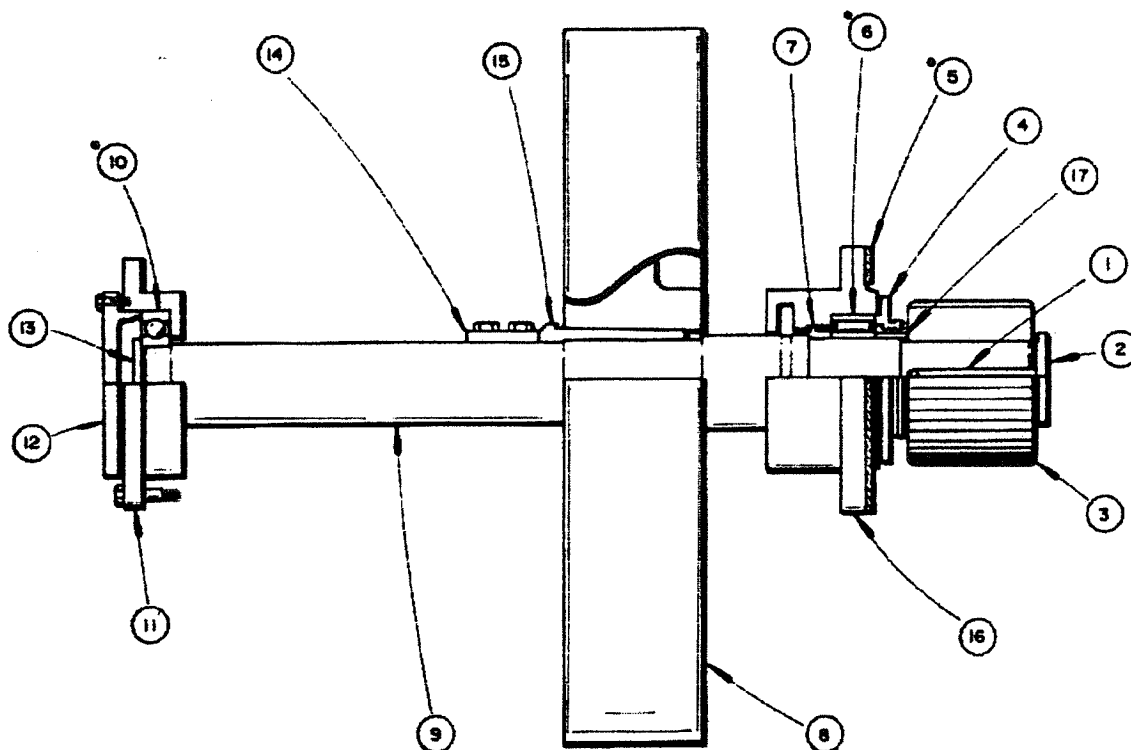


1. Clutch Drive Ring
- 2.* Brake Fric. Disc
- 3.* "E"-Packing
4. Piston
- 5.* "O"-Ring (2)
6. Clutch Locknut
- 7.* "E"-Packing
8. Cylinder
9. Brake Ring
10. Cap Screw (12)
11. Key
- 12.* Gasket
- 13.* Interm. Disc (2)
14. Spring (16) Danly
15. Key (2), 1-1/8" SQ
16. Cl. Drive Hub
- 17.* Cl. Fric.Disc (2)
18. Dowel Pin
19. Pipe Plug
21. Slotted Hex Nut
22. Shoulder Screw
23. Shim
24. Spacer
25. Bearing Sleeve

150

DRIVESHAFT GEARED

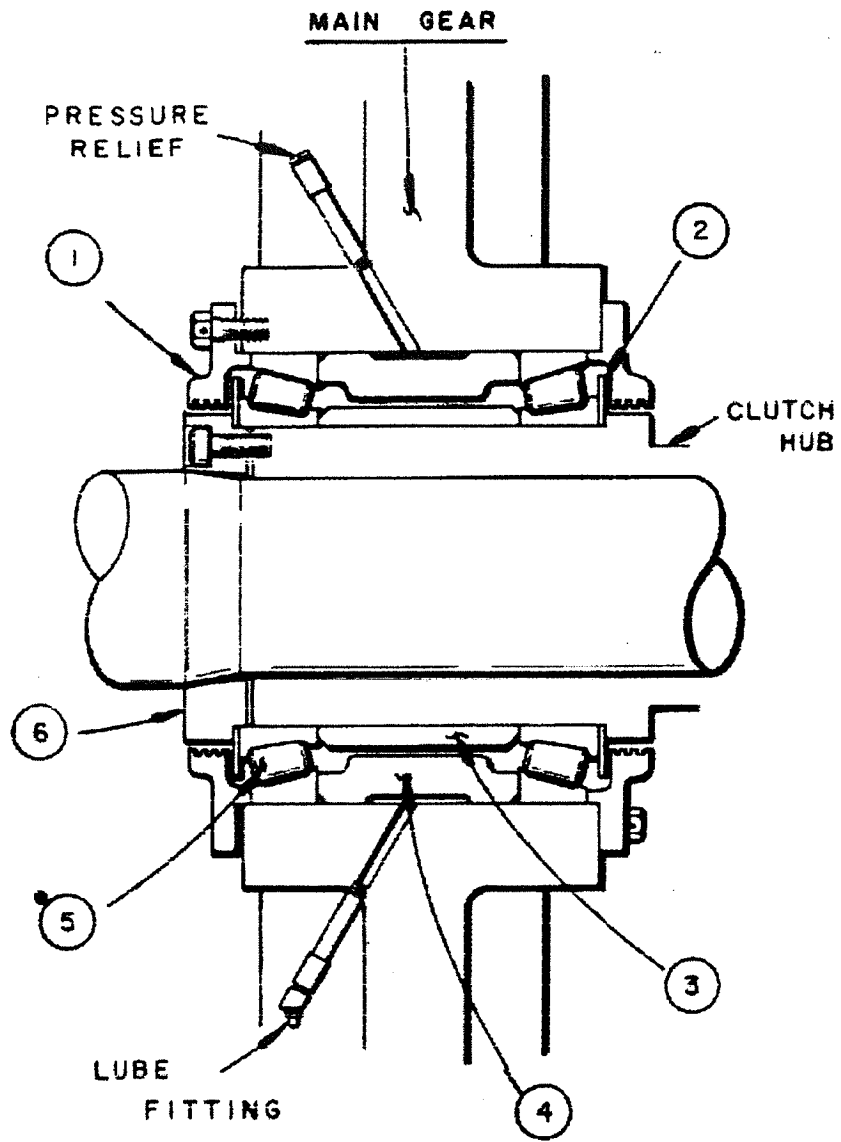
150 Ton OBI
STANDARD



R-8834

- 1. Key (2)
- 2. End Plate
- 3. Pinion, Herr. 16T
- 4. Retainer
- 5*. Gasket,
- 6.* Bearing,
- 7. Bearing Spacer
- 8. Flywheel,
- 9. Driveshaft

- 10.*Bearing,
- 11. Bearing Housing, LH
- 12. Bearing Retainer
- 13. End Plate
- 14. Key,
- 15. Gib Taper Key,
- 16. Bearing Housing, RH
- 17. Spacer



MAIN BEARING
150 Ton OBI
GEAR OR FLYWHEEL

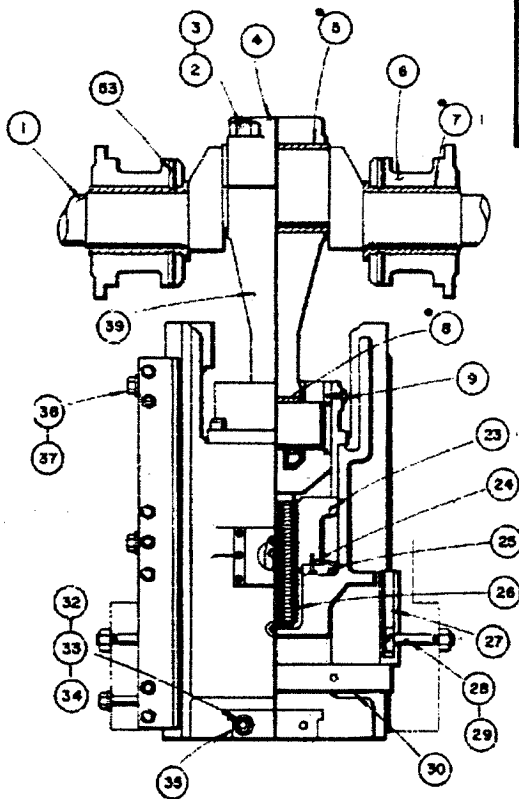
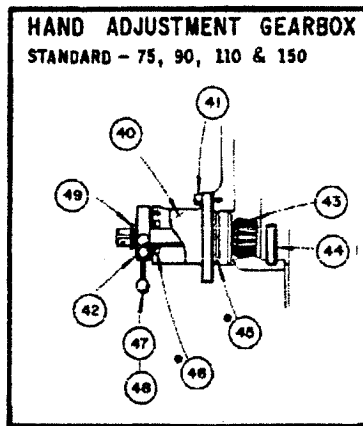
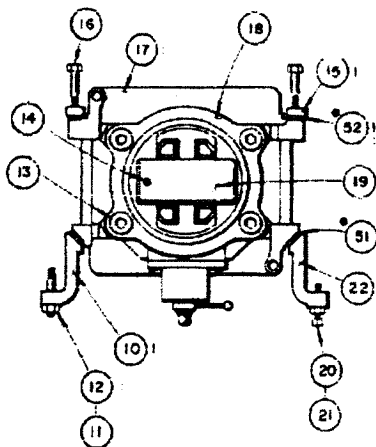
R-10821

- 1. Retainer (2)
- 2. Slinger Plate (2)
- 3. Cone Spacer
- 4. Cup Spacer
- 5.* Bearing (2)
- 6. Retainer
"O"-Ring, Note 2
Clutch Hub

SLIDE ASSEMBLY 150 Ton OBI

STANDARD

R-10278



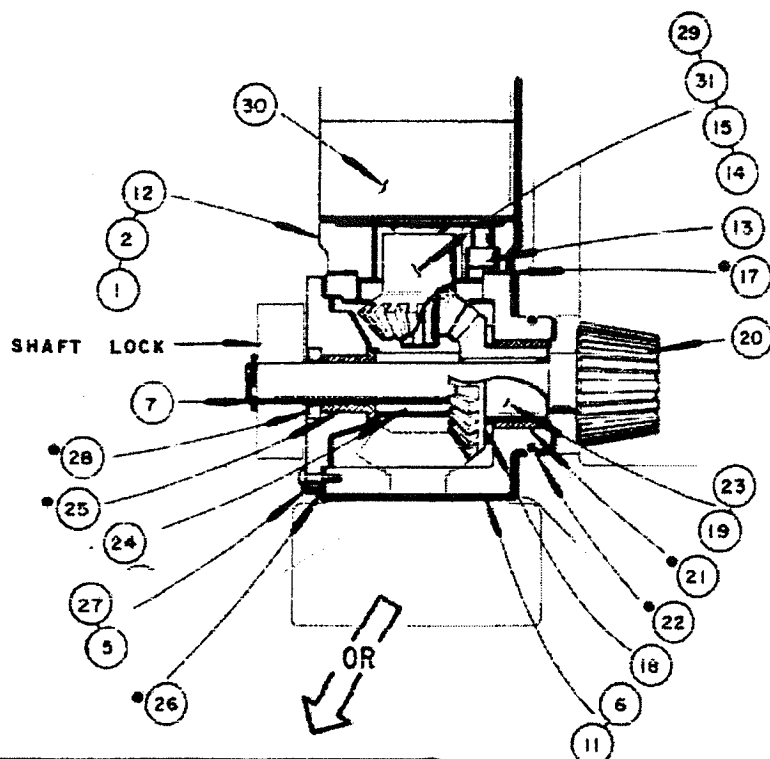
Slide Assembly - 150 Ton Obi - R-10278

1. Crankshaft
2. Hex Locknut
3. Hex Hd.Stud
4. Connection Cap
- 5.* Bushing
6. Bearing Retainer (2)
- 7.* Bushing (2)
- 8.* Wrist Pin Bushing
9. Stop crew
10. Front Gibs (2)
11. Nut
12. Stud,
13. Cap Screw
14. Dowel Pin,
15. Rear Gibs (2)
16. Cap Screw, (10)
17. Slide
18. Slide Adjust Housing
19. Wrist Pin,
20. Sq. Hd.Jack Screw
21. Jam Nut
23. Connection Screw Nut
24. Flat Hd.Mach.Scr. (4)
25. Bevel Gear
26. Connection Screw
27. Knockout Bar Stop (2)
28. 'T'-Bolt (2),
29. Nut
30. Knockout Bar
- 31.
32. Soc.Hd.Cap Stud
33. Washer
34. Nut
35. Slide Cap
- 36.
37. Washer (6)
38. Cap Screw, (6)
39. Connection Strap
40. Housing
41. S.H.Cap Screw
42. Shaft Lock
43. Bevel Pinion (hand)
44. Dowel Pin (4)
- 45.* 'O'-Ring
- 46.* Oil Seal,
48. Control Knob
49. Retaining Ring,
51. Wear Strip (2, front), Std.
52. Wear Strip (2, rear), Std.

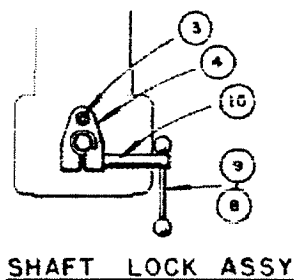
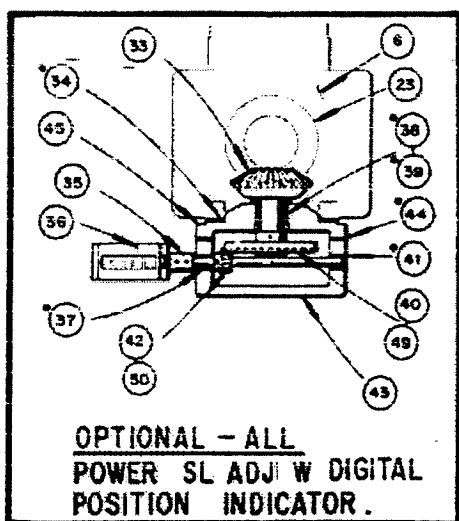
POWER SLIDE ADJUSTMENT GEARBOX

150 Ton OBI

OPTIONAL



R-10466



1. Soc.Hd.Cap Screw (4)
2. Oil Cup,
3. Cap Screw
4. Shaft Lock
5. Cap Screw (6)
6. Gear Housing
7. Retaining Ring,
8. Knob (2)
9. Handle
10. Lock Stud
11. Cap Screw
12. Motor Base
13. Cap Screw (3)
14. Roll Pin,
15. Set Screw
- 17.* Gasket, #681
18. Spacer
19. Key
20. Bevel Pinion Shaft,
- 21.* Bushing
- 22.* "O"-Ring
23. Bevel Gear Pinion,
24. Spacer
- 25.* Bushing

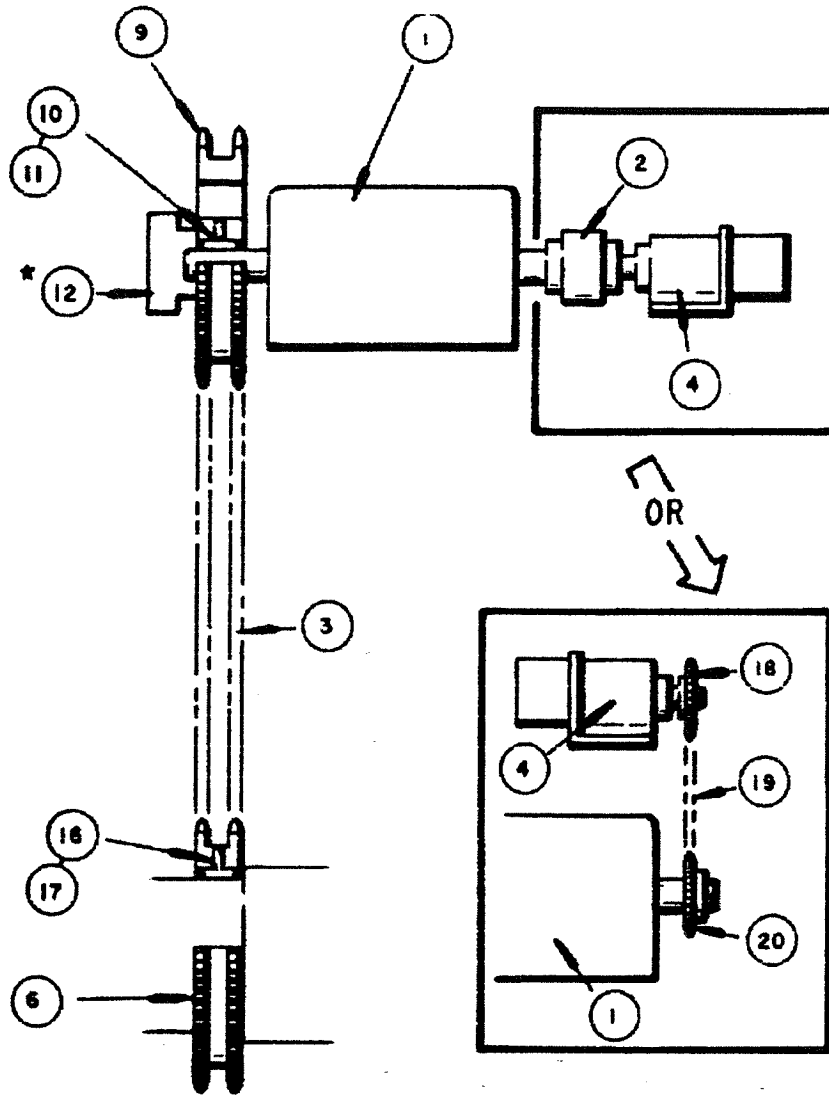
- 26.* Gasket
- 28.* Oil Seal,
30. Air Motor,
- 32.
- 34.* Gasket
36. Counter
- 38.* Bushing
40. Bevel Gear
42. Bevel Pinion
- 44.* Gasket
49. Roll Pin

27. Retainer
29. Bevel Pinion,
31. Key
33. Bevel Pinion
35. Coupling
- 37.* Bushing
- 39.* Oil Seal
- 41.* Bushing
43. Housing
45. Housing Cap
50. Roll Pin

LIMIT SWITCH DRIVE

150 Ton OBI

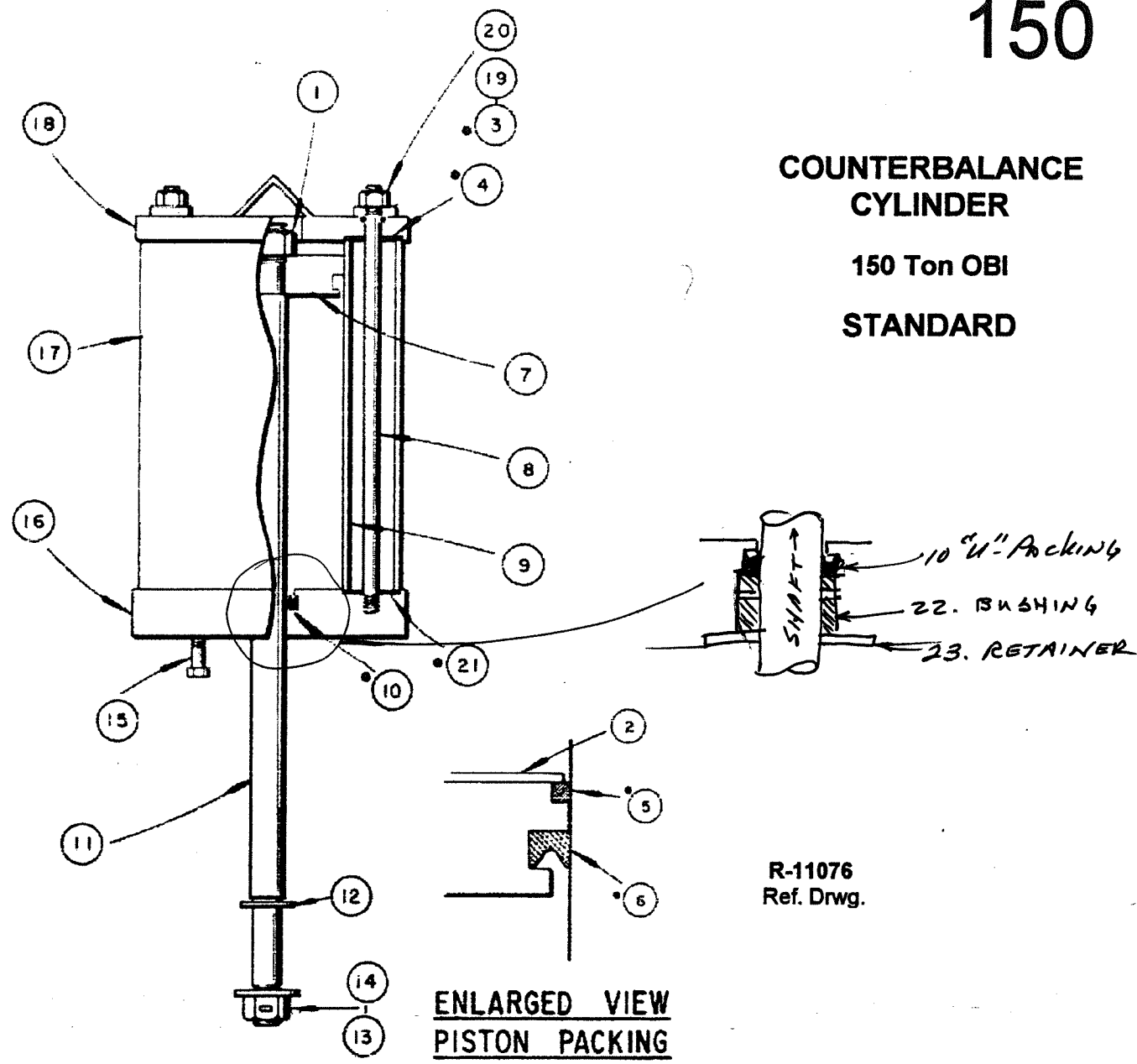
STANDARD



R-8971

- 1. Limit Switch;
- 2. Coupling
- 3. Chain,
- 4. Motion Detector,
- 6. Drive Sprocket
- 9. Driven Sprocket
- 10. Set Screw
- 11. Key
- 12. External Adjust Mech.
- 16. Set Screw
- 17. Key
- 18. Sprocket
- 19. Chain,
- 20. Sprocket,

**COUNTERBALANCE
CYLINDER**
**150 Ton OBI
STANDARD**

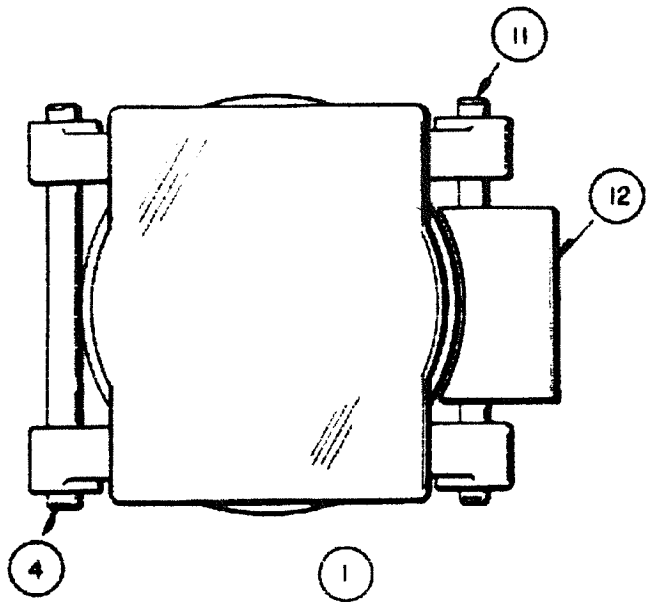


- 1. Locknut
- 2. Washer
- 3.* "O"-Ring (4)
- 4.* Gasket
- 5.* Felt Washer
- 6.* "U"-Packing,
- 7. Piston
- 8. Tie Rod (4)
- 9. Inner Cylinder
- 10.* "U"-Pkng

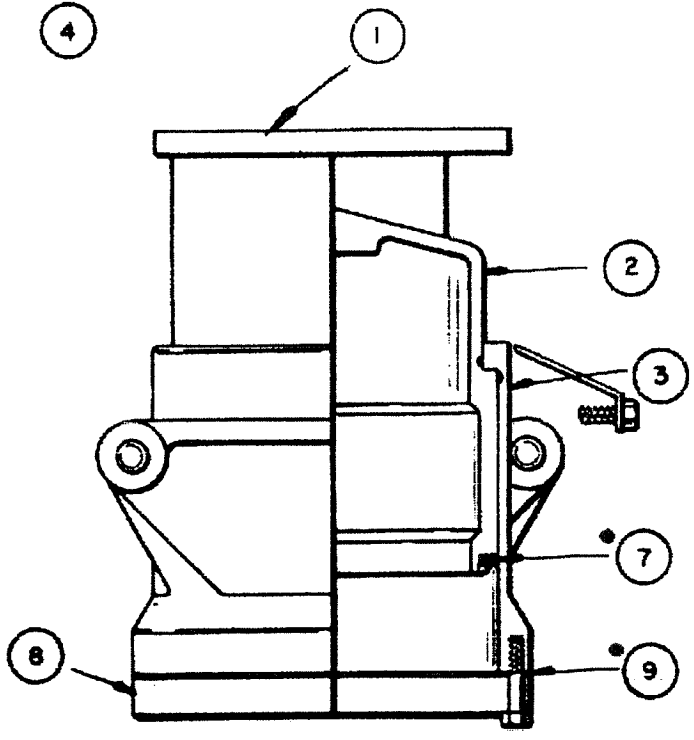
- 11. Piston Shaft,
- 12. Washer, (2)
- 13. Cotter Pin
- 14. Std. Hex Head
- 15. Soc.Hd.Cap Scrw,
- 16. Cylinder Head
- 17. Outer Cylinder
- 18. Cylinder Cover
- 19. Washer (4)
- 20. Hex Nut
- Safety Valve [set at 125 psi]

- 21. SAME AS 4.
- 22. - BUSHING
- 23. - RETAINER

150



R-11209
Ref. Drwg.



CUSHION
150 Ton OBI
OPTIONAL

- 1. Pressure Pad
- 2. Piston
- 3. Cylinder
- 4. Support Rod - Front
- Retaining Rings (2)
- 7.* Packing,
- 8. Cylinder Cover
- H.H.C.S. (8)
- 9.* Gasket
- 11. Support Rod - Rear
- 12. Cover Shield

24" CUSHION
22.6 Tons @ 100 psi
6" stroke