

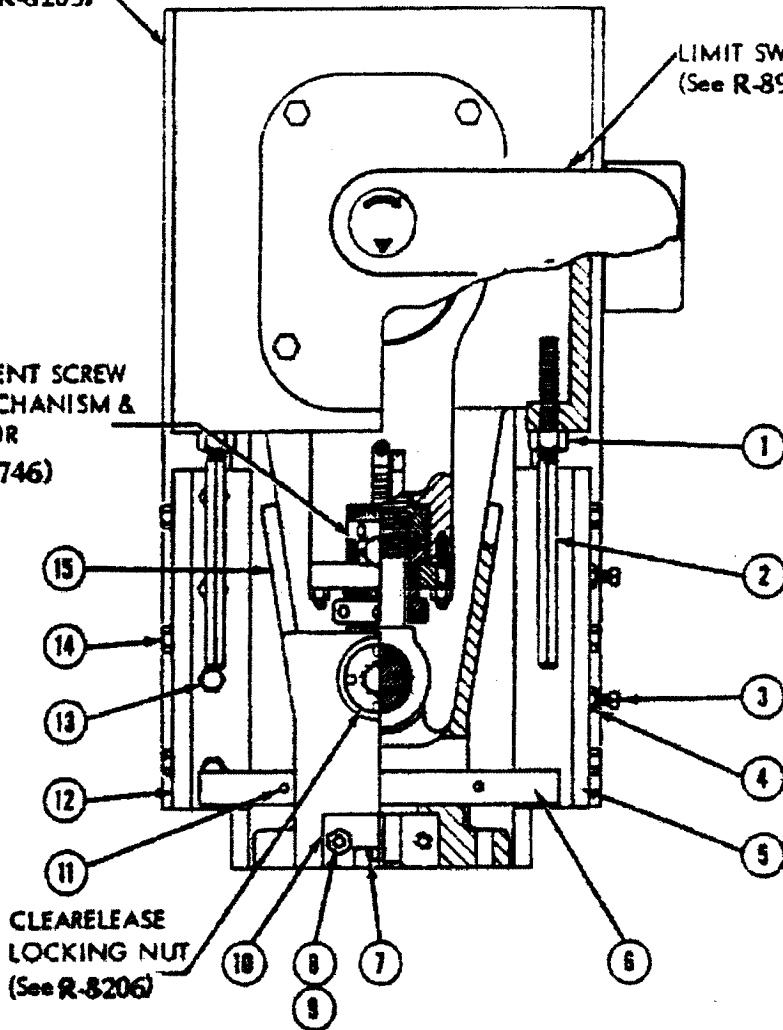
HEAD ASSEMBLY  
(See R-8203)

## SLIDE ADJUSTMENT

45 Ton OBI

LIMIT SW. ASSY  
(See R-8971)

ADJUSTMENT SCREW  
LOCK MECHANISM &  
INDICATOR  
(See R-11746)



CLEARRELEASE  
LOCKING NUT  
(See R-8206)

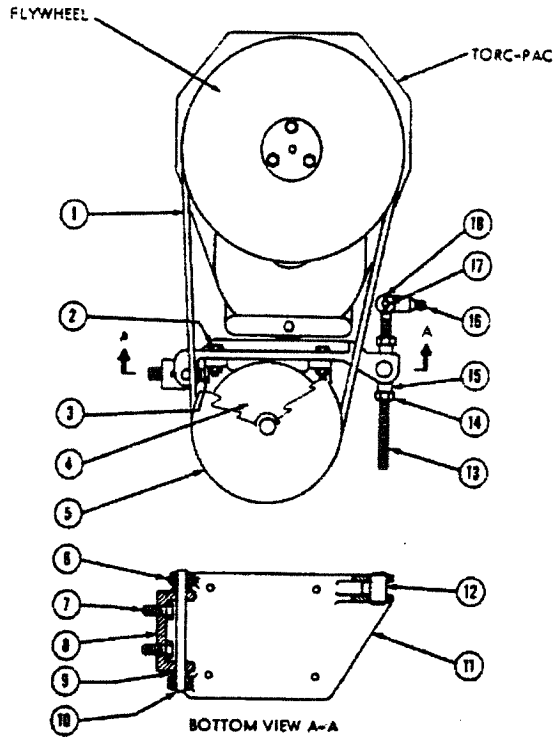
R-8205

1. Hex Nut
2. Knockout Rod
3. Sq.Hd.Set Scrw.
4. Jamb Nut
5. R.H. Gib
6. Knockout Bar
7. Hx.Hd.Cap Scrw.
8. Stud

9. Hex Nut
10. Stand'd Slide Cap  
Flanged Slide Cap
11. Roll Pin
12. L.H. Gib
13. Hx.Hd.Cap Scrw.
14. Hx.Hd.Cap Scrw.
15. Slide

# MOTOR DRIVE

45 Ton OBI

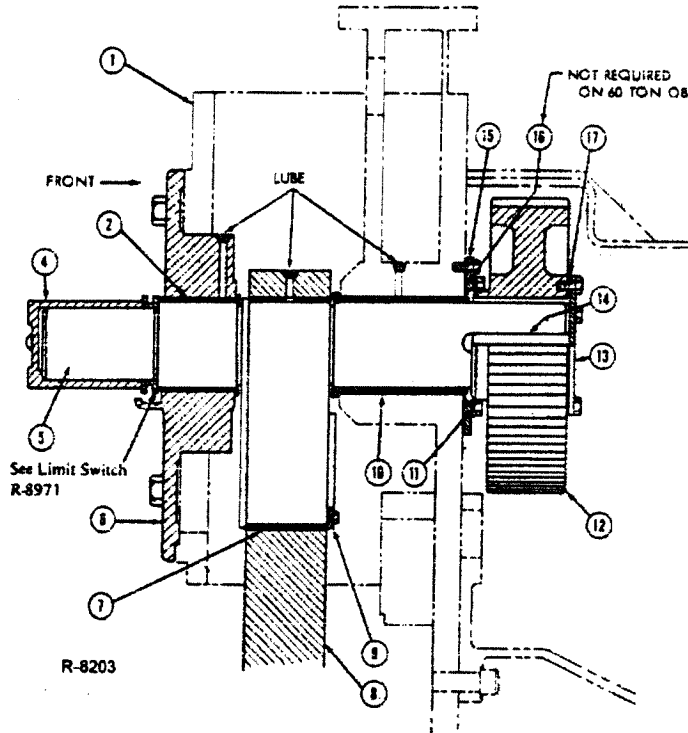


R-8204

- 1.\* Vbelts
2. Hx.Hd.Cap Scrws
3. Security Locknut
4. Main Motor
5. Sheave
6. Cotter Pins
7. Hx.Hd.Cap Scrws, 3/4-10
8. Bracket
9. Washers

10. Motor Support Pin
11. 5 hp Motor Support
12. Pivot Pin
13. Rod End
14. Hex. Nut
15. Spacers, 7/8x .657 od x 1-1/4
16. Yoke
17. Pin
18. Cotter Pins

# HEAD ASS'Y 45 Ton OBI



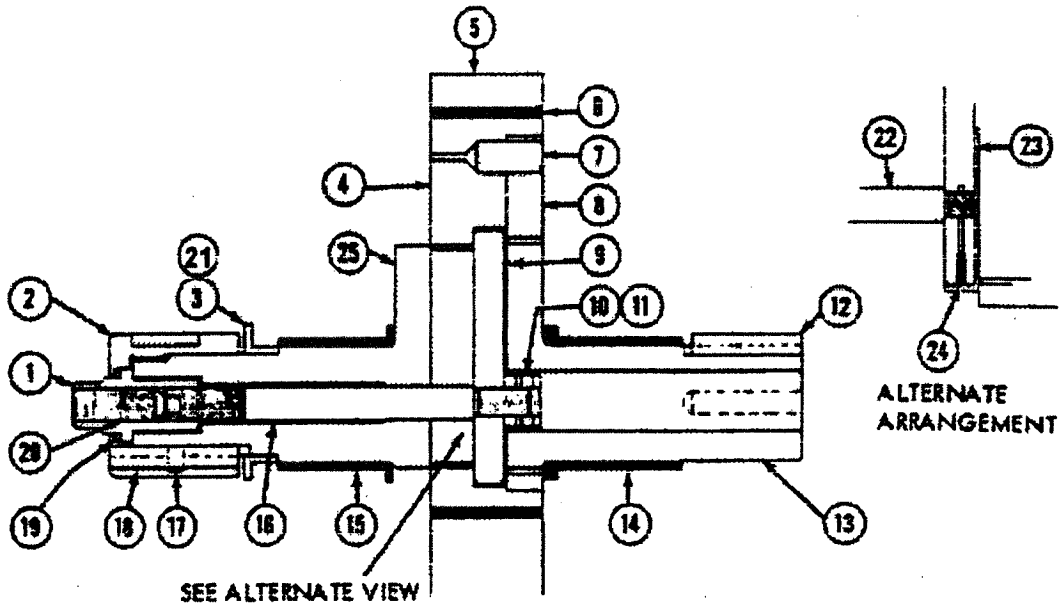
TorcPac Layout  
D-709

**R-8203**

- |                       |                            |
|-----------------------|----------------------------|
| 1. Head               | 10.*Ecc.Bushing R.         |
| 2.*Ecc.Bushing F.     | 11.*Oil Seal,              |
| 3. Limit Cam Switch   | 12. Main Gear              |
| 4. Lock Sleeve        | 13. Shaft End Cover        |
| 5. Ecc. Shaft         | 14. Main Gear Key,         |
| 6. Front Cover        | 15. Seal Housing           |
| 7.*Ecc. Strap Bushing | 16. Gasket,                |
| 8. Connection         | 17. Gasket,                |
| 9. Retainer Ring      | - Gasket, TorcPac to Frame |

## VARIABLE STROKE ASSEMBLY

45 Ton OBI

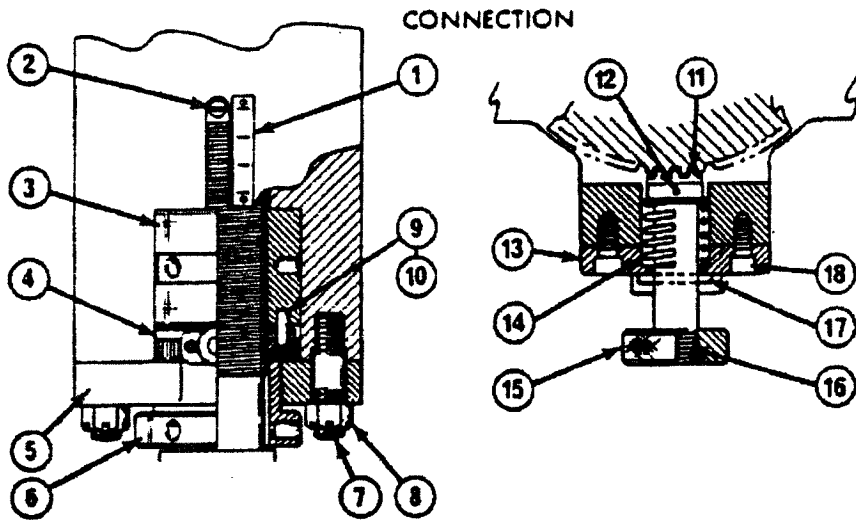


R-10913

- |                                  |                                  |
|----------------------------------|----------------------------------|
| 1. Pull Rod Nut                  | 13. Eccentric Shaft              |
| 2. Lock Sleeve                   | 14.* Bushing, rear               |
| 3. Limit Switch Cam (std.)       | 15.* Bushing, front              |
| 4. Eccentric                     | 16. Pull Rod                     |
| 5. Eccentric Strap               | 17. Soc.Set Scr., 1/4-28 x 1"LG  |
| 6.* Bushing                      | 18. Key                          |
| 7. Dowel Pin (3)                 | 19. Spacer                       |
| 8. Eccentric Gear Plate          | 20. Soc.Set Scr., 3/4-10 x 1"LG  |
| 9. Key                           | 21. Sprocket, Note 1             |
| 10. Pull Rod Nut                 | 22. Pull Rod                     |
| 11. Roll Pin                     | 23. Key                          |
| 12. Key (2), 7/8 x 7/8 x 5-11/16 | 24. Lock Screw                   |
|                                  | 25. Eccentric Hub<br>Front Cover |

# INDICATOR ASSEMBLY

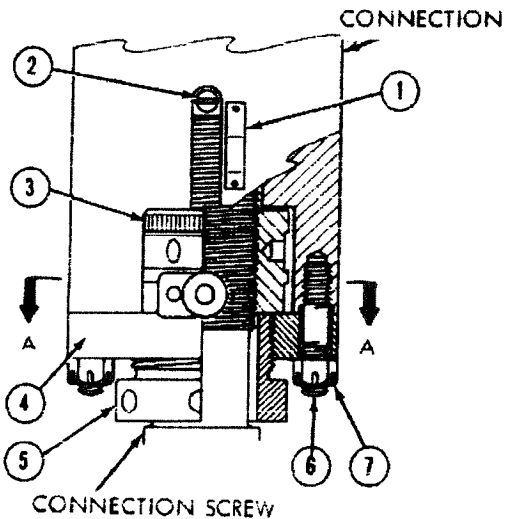
45 TON OBI



R-11746

## PARTS LIST FOR NEWER STYLE INDICATOR

- |                           |                             |
|---------------------------|-----------------------------|
| 1. Scale                  | 10. Dowel Pin               |
| 2. Indicator Screw        | 11. Rack                    |
| 3. Connection Nut (upper) | 12. Roll Pin                |
| 4. Connection Nut (lower) | 13. Adjustment Lock Cover   |
| 5. Adjustment Lock Plate  | 14. Spring                  |
| 6. Slide Adj. Lock Nut    | 15. Knurled Nut             |
| 7. Stud                   | 16. Gear Rack Holder        |
| 8. Slotted Hex Nut        | 17. Dowel Pin,              |
| 9. Pipe Plug              | 18. Soc.Hd.Cap Screws       |
|                           | Connection Screw, New style |
|                           | Connection Screw, Old style |



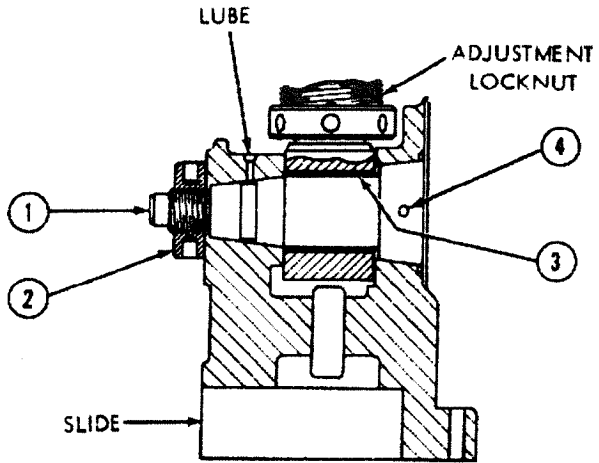
## PARTS LIST FOR OLDER STYLE INDICATOR

1. Scale
2. Indicator Screw
3. Connection Nut
4. Adj. Lock Plate

R-8207  
Ref.Layout

# CLEARELEASE MECHANISM

45 Ton OBI

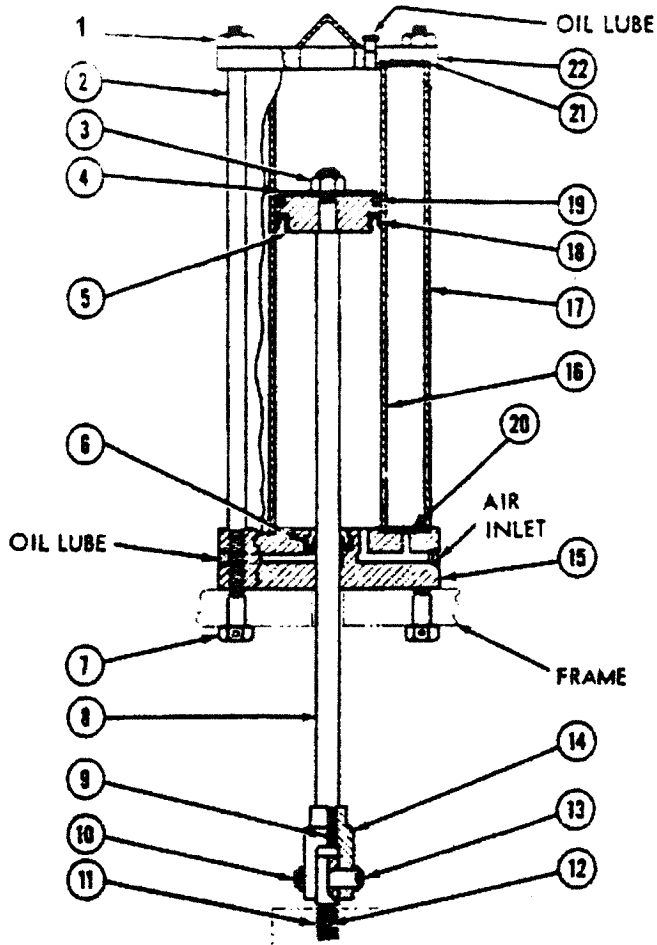


- 1. Wrist Pin
- 2. Locking Nut
- 3. Wrist Pin Bushing
- 4. Locating Dowel, 3/8"x 3/4" LG

R-8206

# COUNTER BALANCE

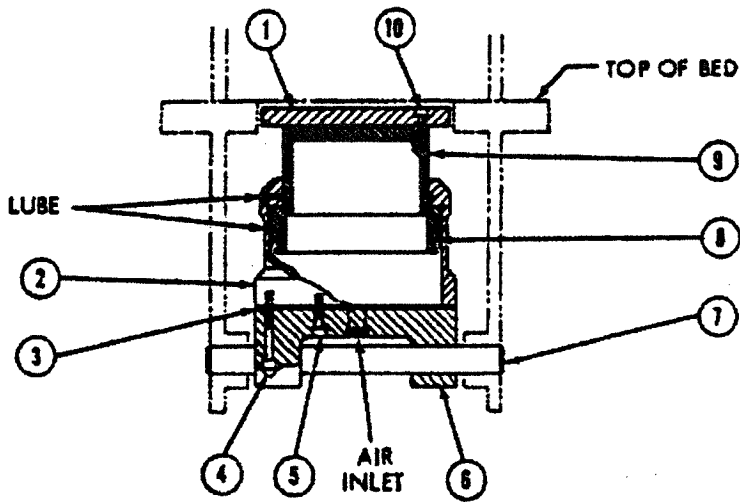
45 Ton OBI



R-11744

- |                      |                                    |
|----------------------|------------------------------------|
| 1. Hex Nut           | 12. Spring Pin                     |
| 2. Tie Rod (4)       | 13. Clevis Pin                     |
| 3. Locknut           | 14. Clevis                         |
| 4. Steel Washer      | 15. Cylinder Head                  |
| 5. Piston            | 16. Cylinder - Inner               |
| 6.* 'U'-Cup Packing  | 17. Cylinder - Outer               |
| 7. Hx.Hd.Cap Scrw.   | 18.* 'U'-Cup Packing               |
| 8. Counterbal. Shaft | 19. Felt Wiper                     |
| 9. Roll Pin          | 20.* Gasket, 5-3/4x1/16            |
| 10. Cotter Pin       | 21.* Gasket, 5-3/4x1/16            |
| 11. Screw Eye        | 22. Cylinder Cover<br>Safety Valve |

45



**CUSHION ASSEMBLY**

**45 Ton OBI**

**R-8210**

- 1. Pressure Plate
- 2. Cushion Cylinder
- 3. Gasket
- 4. Soc.Hd.Cap Scr,
- 5. Soc.Hd.Cap Scr,

- 6. Cushion Support
- 7. Support Pin
- 8.\* 'U'-Packing
- 9. Cushion Piston
- 10. Soc.Hd.Cap Scr,

12" Cushion;    tons @ 100 psi;    stroke; Pressure plate 1/2" below bed