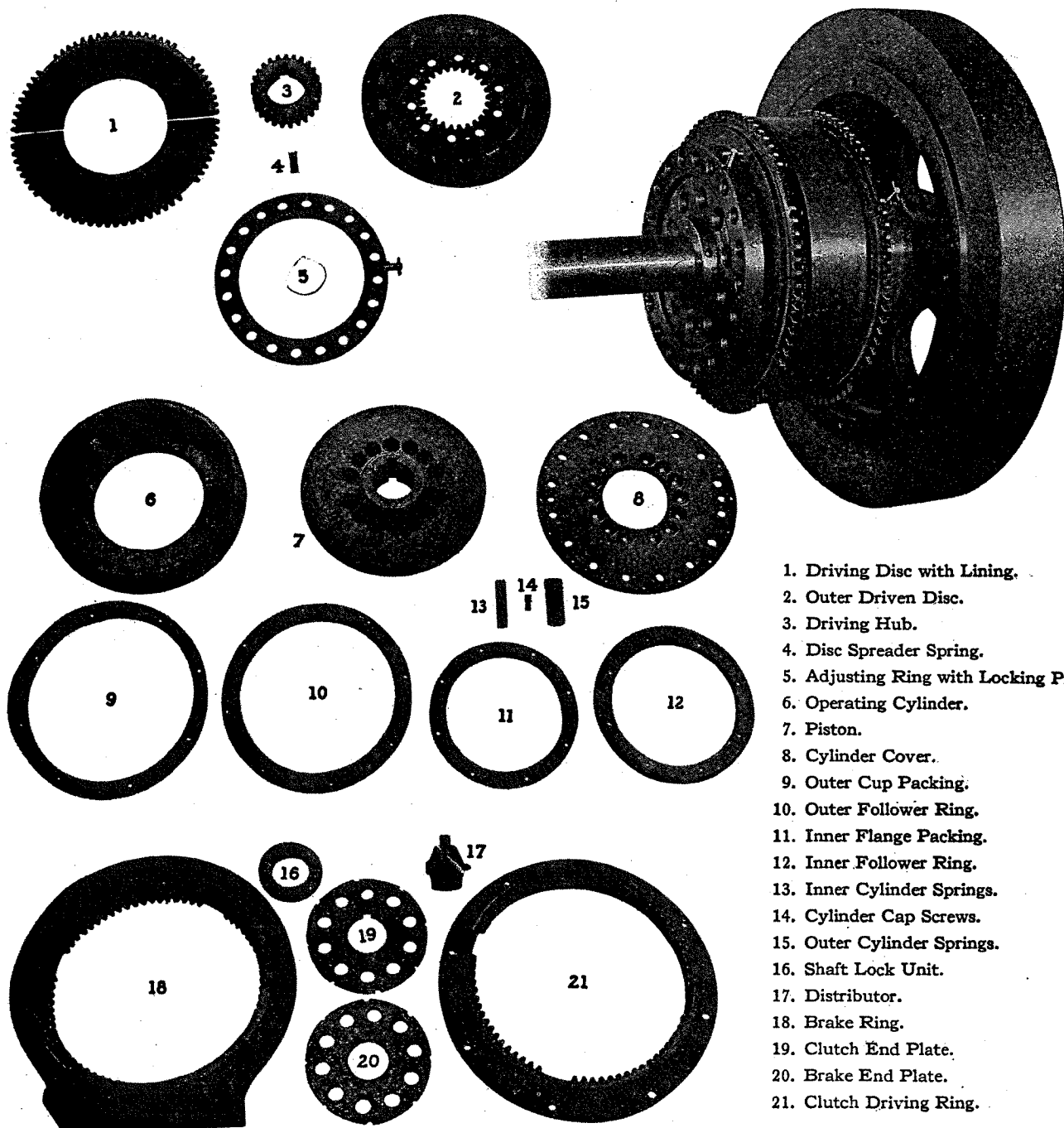


INSTRUCTIONS

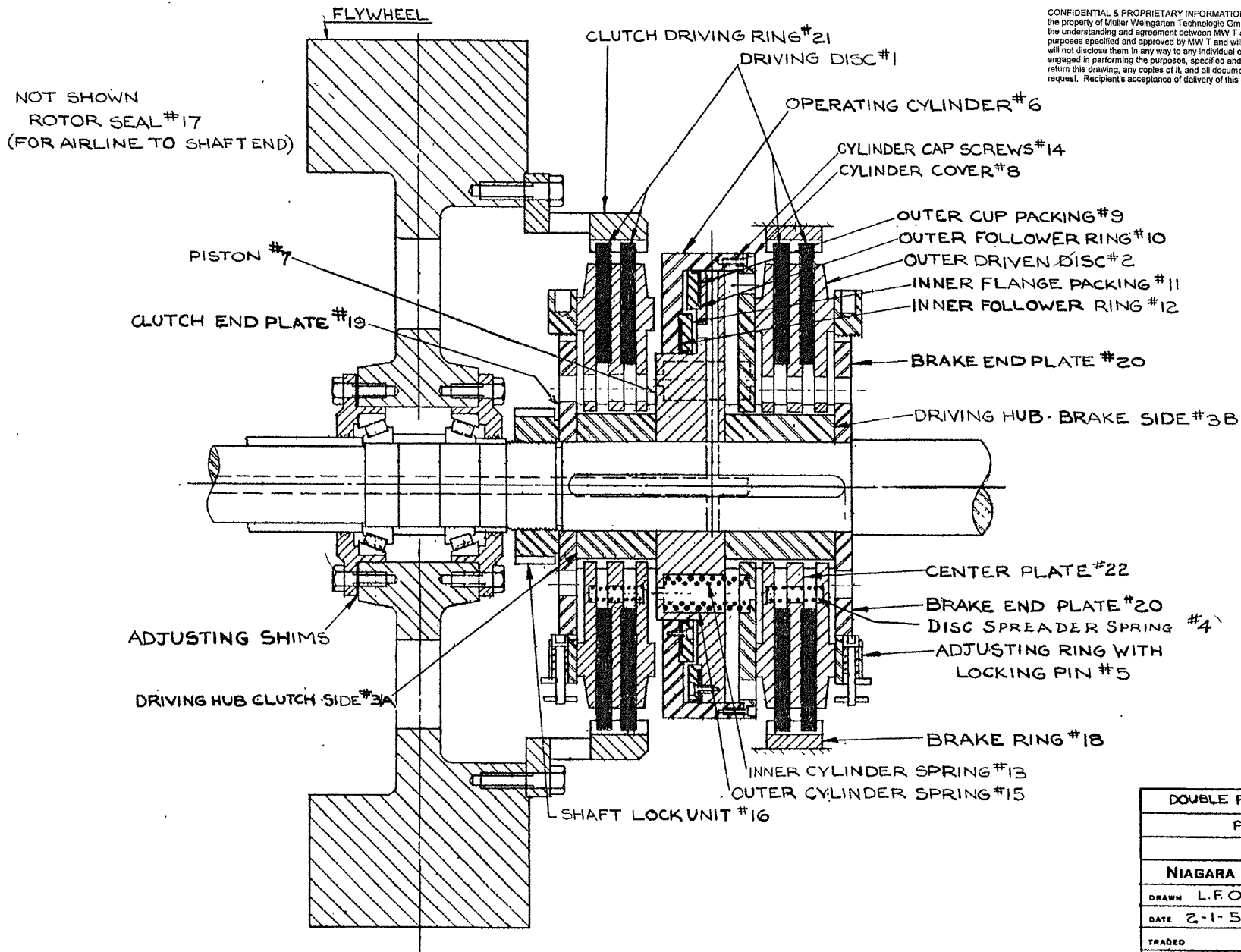
Niagara Air Clutch

Do Not Destroy these Instructions, give them to the Operator of the Machine to which they apply. Save for ready reference. Follow all Directions Carefully. Additional copies furnished on request.

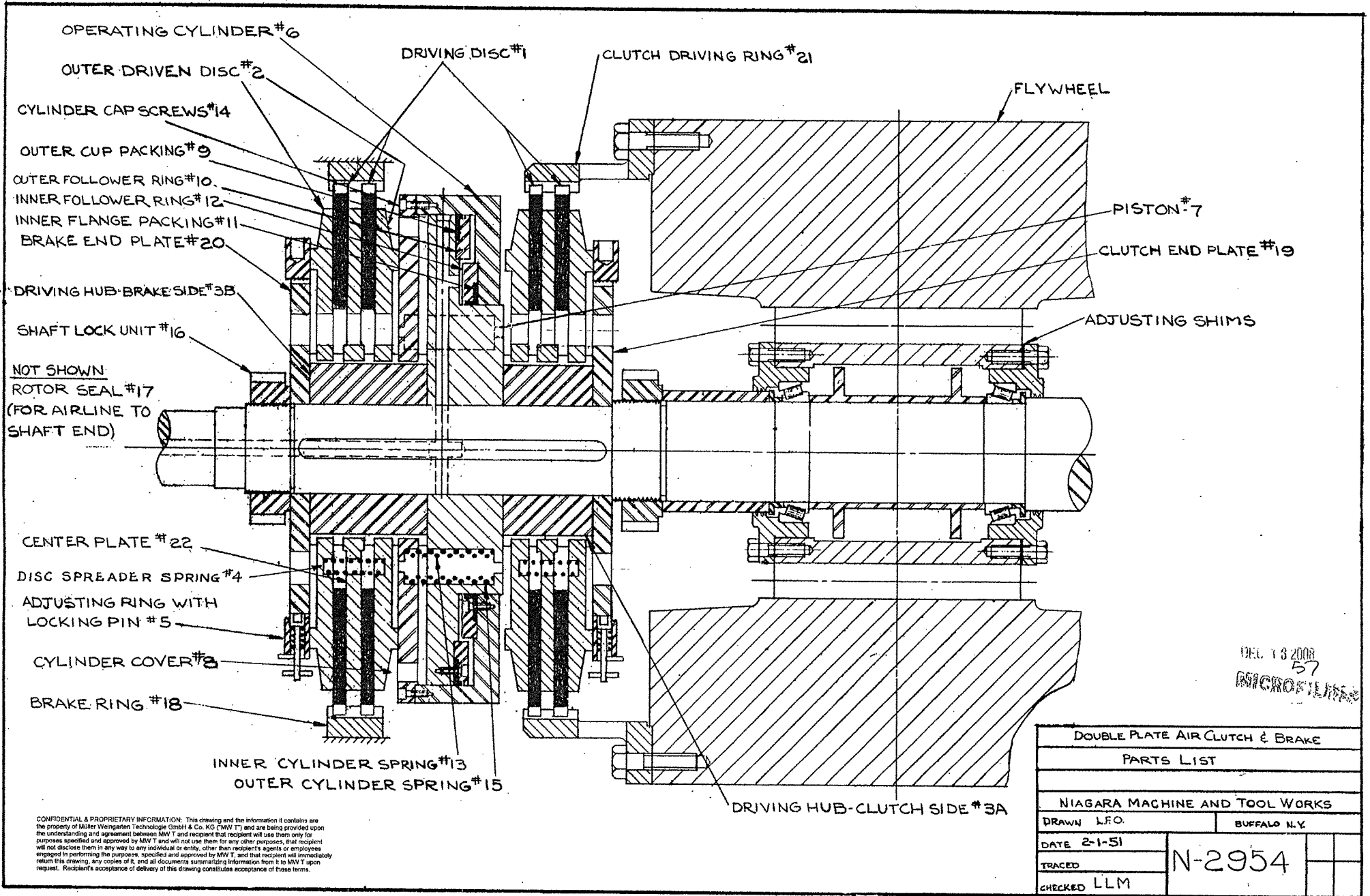


1. Driving Disc with Lining.
2. Outer Driven Disc.
3. Driving Hub.
4. Disc Spreader Spring.
5. Adjusting Ring with Locking Pin.
6. Operating Cylinder.
7. Piston.
8. Cylinder Cover.
9. Outer Cup Packing.
10. Outer Follower Ring.
11. Inner Flange Packing.
12. Inner Follower Ring.
13. Inner Cylinder Springs.
14. Cylinder Cap Screws.
15. Outer Cylinder Springs.
16. Shaft Lock Unit.
17. Distributor.
18. Brake Ring.
19. Clutch End Plate.
20. Brake End Plate.
21. Clutch Driving Ring.

CONFIDENTIAL & PROPRIETARY INFORMATION: This drawing and the information it contains are the property of Möller Weingarten Technologie GmbH & Co. KG ("MW T") and are being provided upon the understanding and agreement between MW T and recipient that recipient will use them only for purposes specified and approved by MW T and will not use them for any other purposes, that recipient will not disclose them in any way to any individual or entity, other than recipient's agents or employees engaged in performing the purposes, specified and approved by MW T, and that recipient will immediately return this drawing, any copies of it, and all documents summarizing information from it to MW T upon request. Recipient's acceptance of delivery of this drawing constitutes acceptance of these terms.



DOUBLE PLATE AIR CLUTCH & BRAKE	
PARTS LIST	
NIAGARA MACHINE AND TOOL WORKS.	
DRAWN L.F.O.	BUFFALO, N.Y.
DATE 2-1-51	
TRADED	N-2955
CHECK. LLM	



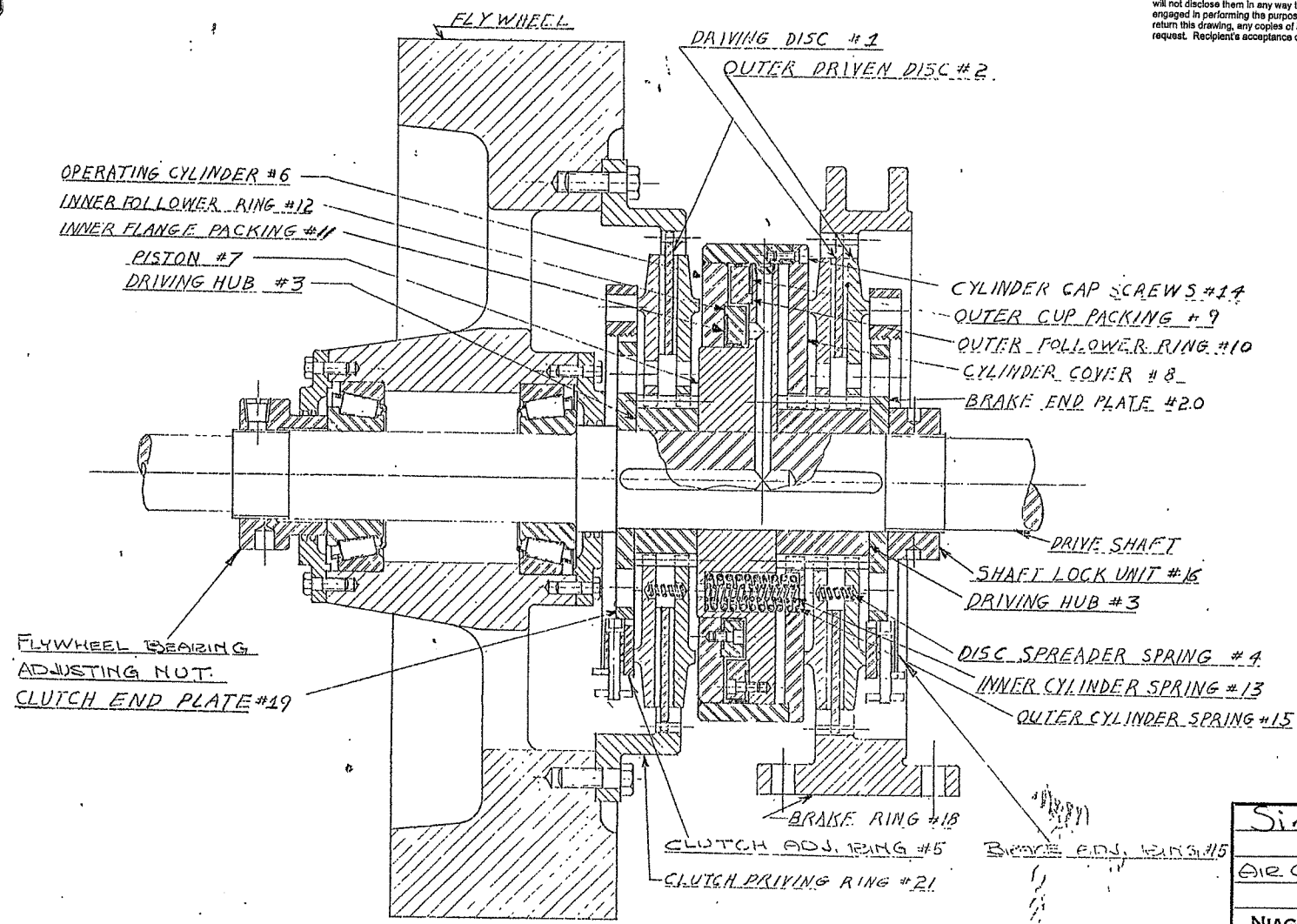
DEL 13 2008
57
MICROFILMS

DOUBLE PLATE AIR CLUTCH & BRAKE	
PARTS LIST	
NIAGARA MACHINE AND TOOL WORKS	
DRAWN L.F.O.	BUFFALO N.Y.
DATE 2-1-51	N-2954
TRACED	
CHECKED LLM	

CONFIDENTIAL & PROPRIETARY INFORMATION: This drawing and the information it contains are the property of Walter Wiegantem Technologie GmbH & Co. KG ("MW T") and are being provided upon the understanding and agreement between MW T and recipient that recipient will use them only for purposes specified and approved by MW T and will not use them for any other purposes, that recipient will not disclose them in any way to any individual or entity, other than recipient's agents or employees engaged in performing the purposes, specified and approved by MW T, and that recipient will immediately return this drawing, any copies of it, and all documents summarizing information from it to MW T upon request. Recipient's acceptance of delivery of this drawing constitutes acceptance of these terms.

1413554

CONFIDENTIAL & PROPRIETARY INFORMATION: This drawing and the information it contains are the property of Müller Weingarten Technologie GmbH & Co. KG ("MW T") and are being provided upon the understanding and agreement between MW T and recipient that recipient will use them only for purposes specified and approved by MW T and will not use them for any other purposes, that recipient will not disclose them in any way to any individual or entity, other than recipient's agents or employees engaged in performing the purposes, specified and approved by MW T, and that recipient will immediately return this drawing, any copies of it, and all documents summarizing information from it to MW T upon request. Recipient's acceptance of delivery of this drawing constitutes acceptance of these terms.



MICROFILMED

N-2954 & N-2955

* PATTERN DIMENSION ONLY
 # CLEAN UP CASTING (NO SIZE)
 # BORE IN CENTER OF BOSS
 X FINISH OR REAM

Single Plate	
AIR CLUTCH & FLYWHEEL ASSEMBLY	
NIAGARA MACHINE AND TOOL WORKS	
DRAWN Westphal	BUFFALO, N. Y.
DATE 9-12-58	
TRACED	N-2527
CHECKED 2/2/60	