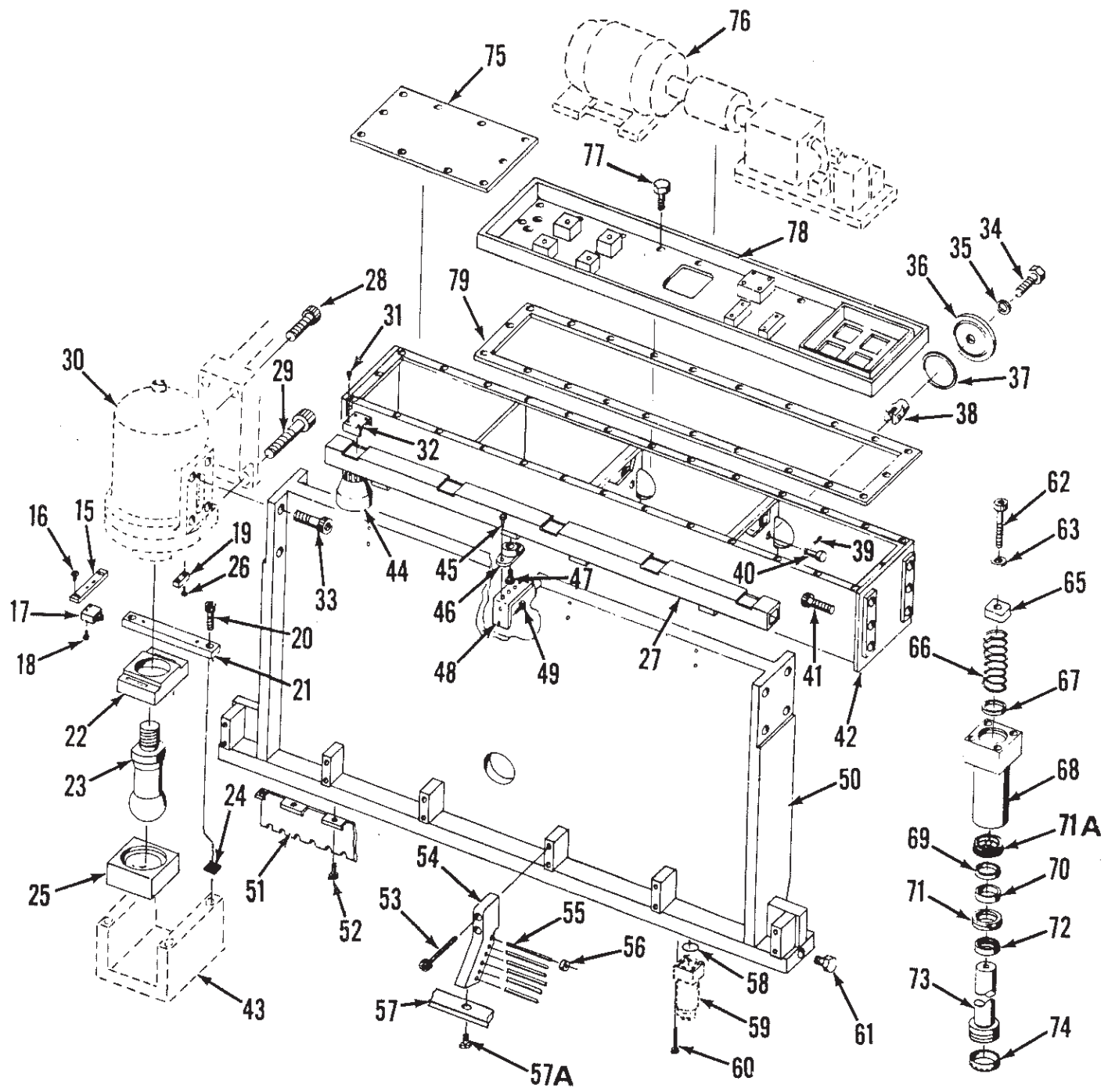
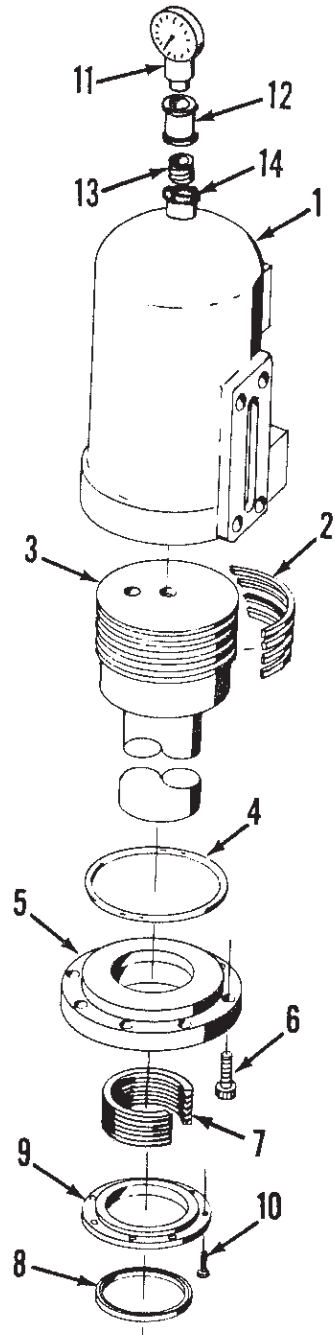


## SEC. 4: PARTS LIST

SINCE THE REFERENCE OR CALL OUT NUMBERS ON THE FOLLOWING PARTS LIST ARE DUPLICATED ON OTHER PARTS LISTS, SPECIFY PART REQUIRED BY GIVING REFERENCE NUMBER AND FULL NAME FOLLOWED BY FORM AND PAGE NUMBER.

### HOUSINGS, BED, RAM

- |  |                          |
|--|--------------------------|
| 1. Cylinder (see separate Parts List)    | 40. V-Head Bolt          |
| 2. Holddown (see separate Parts List)    | 41. Nut                  |
| 3. L.H. Gap Guard                        | 42. Brace Rod Nut        |
| 4. Capscrew                              | 43. Capscrew             |
| 5. L.H. Guide Cap                        | 44. R.H. Guide Cap       |
| 6. Guide Cap Liner                       | 45. Pivot Shoe           |
| 7. Screw                                 | 46. Guide Cap Liner      |
| 8. Bolt                                  | 47. Screw                |
| 9. Side Gage                             | 48. Pivot Shoe           |
| 10. Scale                                | 49. Thrust Block         |
| 11. Screw                                | 50. Capscrew             |
| 12. Pocket Cover                         | 51. Screw                |
| 13. Bed                                  | 52. R.H. Ram Liner       |
| 14. Reverse Key Plow Bolt                | 53. Housing (R.H. shown) |
| 15. Moving Blade                         | 54. Dial Indicator Cover |
| 16. Washer                               | 55. Screw                |
| 17. Nut                                  | 56. Washer               |
| 18. Ram                                  | 57. Bolt                 |
| 19. Brace Rod                            | 58. Leveling Screw       |
| 20. Retainer Ring                        | 59. Bolt                 |
| 21. Pin                                  | 60. R.H. Gap Cover       |
| 22. Connecting Block                     | 61. Control Box          |
| 23. Jam Nut                              | 62. Bolt                 |
| 24. Brace Rod Adjusting Stud             | 63. Bolt                 |
| 25. Adjusting Nut                        | 64. Roller               |
| 26. Ball Transfer                        | 65. Slitting Gage        |
| 27. Bed Adjusting Bolts (Push-Pull type) | 66. Bolt                 |
| 28. Fixed Blade                          | 67. Washer               |
| 29. Mounting Block                       | 68. Nut                  |
| 30. Nut                                  | 69. Screw                |
| 31. Stud                                 | 70. Bed Scale Washer     |
| 32. Nut                                  | 71. Bed Adjusting Bolt   |
| 33. Bolt                                 | 72. Capscrew             |
| 34. Position Indicator                   | 73. Washer               |
| 35. Stud                                 | 74. Disc Spring          |
| 36. Dovetail Bolt                        | 75. Bed Adjusting Sleeve |
| 37. Front Bracket                        | 76. Bed Adjusting Bolt   |
| 38. Nut                                  |                          |
| 39. Solid Stop                           |                          |
- Single Point  
Type



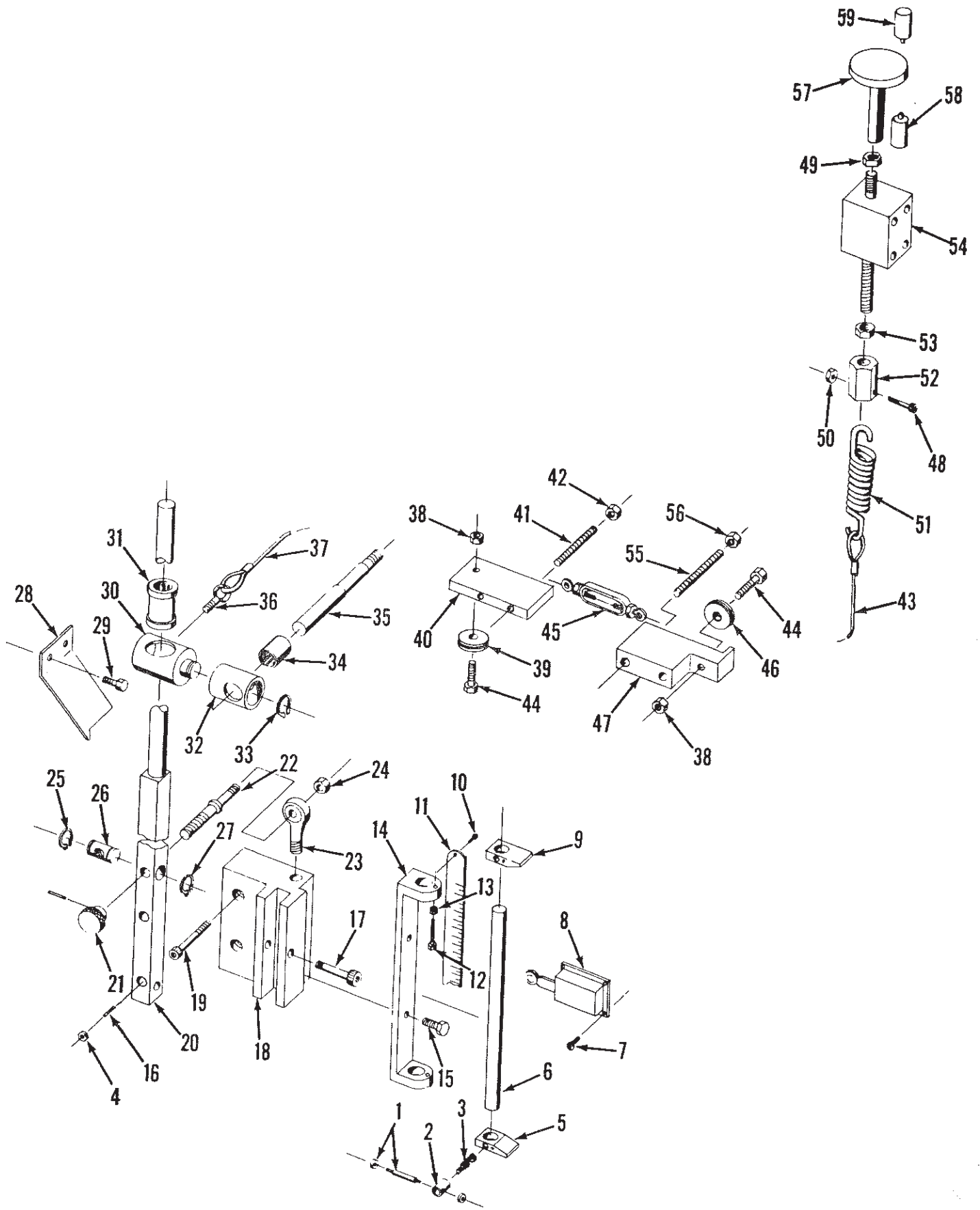
## MAIN CYLINDER

1. Main Cylinder, L.H.
2. Piston Rings
3. Piston
4. "O" Ring
5. Cylinder Cap
6. Capscrew
7. Chevron Packing
8. Wiper Ring
9. Packing Gland
10. Capscrew
11. Test Gage
12. Quick Disconnect Plug
13. Reducer
14. Plug
15. Limit Switch Mounting Plate (2)
16. Screw
17. Limit Switch (2)
18. Screw
19. Ballscrew Lock
20. Capscrew
21. Ballscrew Cap Retainer (2)
22. Ballscrew Cap
23. Ballscrew
24. Shim
25. Ball Seat
26. Screw

27. Light Beam Bar
28. Capscrew
29. Capscrew
30. Cylinder Assembly
31. Screw
32. Cover
33. Capscrew
34. Bolt
35. Washer
36. Inspection Door
37. Seal
38. Yoke
39. Cotter Pin
40. Pin
41. Capscrew
42. Reservoir Tank
43. Ram (see separate Parts List)
44. Light
45. Bolt
46. Shock Mount
47. Bolt
48. Mounting Bracket
49. Bolt
50. Holddown
51. Blade Guard
52. Bolt
53. Capscrew
54. Guard Bracket
55. Rod
56. Rod Retainer
57. Awareness Guard
- 57A. Bolt
58. "O" Ring
59. Holddown Foot Assembly
60. Capscrew
61. Plug

## HOLDDOWN FOOT

62. Capscrew
63. Washer
65. Piston
66. Spring
67. Washer
68. Cylinder
69. Rod Seal
70. Bushing
71. Retainer
- 71a. Retainer
72. Wiper
73. Foot
74. Cap (Optional)
75. Cover
76. Motor and Manifold (see Hydraulic Schematic)
77. Bolt
78. Tank Cover
79. Gasket



## RAKE AND STROKE CONTROL

### STROKE CONTROL

1. Knob & Pin
2. Clamping Nut
3. Clamping Bolt
4. Jam Nut
5. Lower Cam
6. Gage Rod
7. Screw
8. Limit Switch
9. Upper Cam
10. Screw
11. Scale
12. Bolt
13. Nut
14. Bracket
15. Mounting Bolt
16. Set Screw

### RAKE CONTROL

17. Capscrew
18. Thrust Block
19. Capscrew
20. Rake Control Rod
21. Knurl Knob
22. Screw
23. Rod End
24. Nut
25. Retaining Ring
26. Nut
27. Retaining Ring
28. Pointer

29. Mounting Bolt
30. Trunnion
31. Ball Bushing
32. Slide
33. Retaining Ring
34. Ball Bushing
35. Guide
36. Eye Bolt
37. Cable
38. Jam Nut
39. Pulley
40. Pulley Bracket
41. Stud
42. Nut
43. Cable
44. Bolt
45. Turnbuckle
46. Pulley
47. Pulley Bracket
48. Capscrew
49. Nut
50. Nut
51. Spring
52. Extension Collar
53. Nut
54. Valve
55. Stud
56. Nut
57. Rake Control Trip
58. Lower Limit Switch
59. Upper Limit Switch



- |                      |                                  |                                 |
|----------------------|----------------------------------|---------------------------------|
| 1. Screw             | 43. Nut                          | 85. Bushing                     |
| 2. Magnifier         | 44. Worm Gear                    | 86. Indicating Collar           |
| 3. Screws            | 45. Spacer                       | 87. Screw                       |
| 4. Counter Cover     | 46. Bearing                      | 88. Gear Cover                  |
| 5. Bushings          | 47. Key                          | 89. Spacer                      |
| 6. Support Plate     | 48. Intermediate Shaft           | 90. Adjusting Screw             |
| 7. Roll Pin          | 49. Cap Screw                    | 91. Key                         |
| 8. Set Screw         | 50. Grease Fittings              | 92. Mounting Rod                |
| 9. Helical Gear      | 51. Way Wipers                   | 93. Limit Switch Sprocket       |
| 10. Helical Gear     | 52. Screws                       | 94. Set Screw                   |
| 11. Shaft            | 53. Slide Cap                    | 95. Limit Switch                |
| 12. Counter          | 54. Slide Liner                  | 96. Oil Cup                     |
| 13. Bolt             | 55. Slide                        | 97. Screw                       |
| 14. Counter Housing  | 56. Gage Bar                     | 98. Limit Switch Cover          |
| 15. Cap Screw        | 57. Brace Rod Bolt Adjusting Nut | 99. Acorn Nut                   |
| 16. Screw            | 58. Jam Nut                      | 100. Bolt                       |
| 17. Sleeve           | 59. Brace Rod Bolt               | 101. Motor Mounting Bracket     |
| 18. Flexible Shaft   | 60. Bolt                         | 102. Washer                     |
| 19. Set Screws       | 61. Brace Rod                    | 103. Bolt                       |
| 20. Coupling         | 62. Coupling                     | 104. Drive Motor                |
| 21. Set Screw        | 63. Brace Rod Extension          | 105. Keys                       |
| 22. Sprocket         | 64. Bolt                         | 106. Brake                      |
| 23. Chain            | 65. Keeper                       | 107. Drive Sprocket             |
| 24. Nuts             | 66. Nut                          | 108. Set Screw                  |
| 25. Lockwashers      | 67. Key                          | 109. Chain Guard                |
| 26. Retaining Rings  | 68. Key                          | 110. Nut                        |
| 27. Bearing          | 69. Set Screw                    | 111. Bolt                       |
| 28. Spacer           | 70. Limit Switch Drive Sprocket  | 112. Bridge                     |
| 29. Helical Gear     | 71. Limit Switch Drive Chain     | 113. Clevis                     |
| 30. Cap Screw        | 72. Bearing                      | 114. Clevis Pin                 |
| 31. Screw Support    | 73. Bearing Nut                  | 115. Spring Clips               |
| 32. Bolt             | 74. Spacer                       | 116. Lifting Cylinder           |
| 33. Bracket          | 75. Lock Washer                  | 117. Cylinder Pin               |
| 34. Drive Shaft      | 76. Nut                          | 118. Cotter Pins                |
| 35. Key              | 77. Adjusting Gear               | 119. Hinge Bracket              |
| 36. Key              | 78. Retaining Ring               | 120. Hinge Pin                  |
| 37. Bearing          | 79. Bearing                      | 121. Bearing                    |
| 38. Set Screw        | 80. Bearing Nut                  | 122. Pivot Bracket              |
| 39. Coupling Halves  | 81. Lock Washer                  | 123. Crosshead Cylinder Bracket |
| 40. Coupling Insert  | 82. Nut                          | 124. Instruction Plate          |
| 41. Connecting Shaft | 83. Adjusting Collar             | 125. Chain Guard Back Plate     |
| 42. Adjusting Nut    | 84. Spring                       | 126. Retaining Ring             |